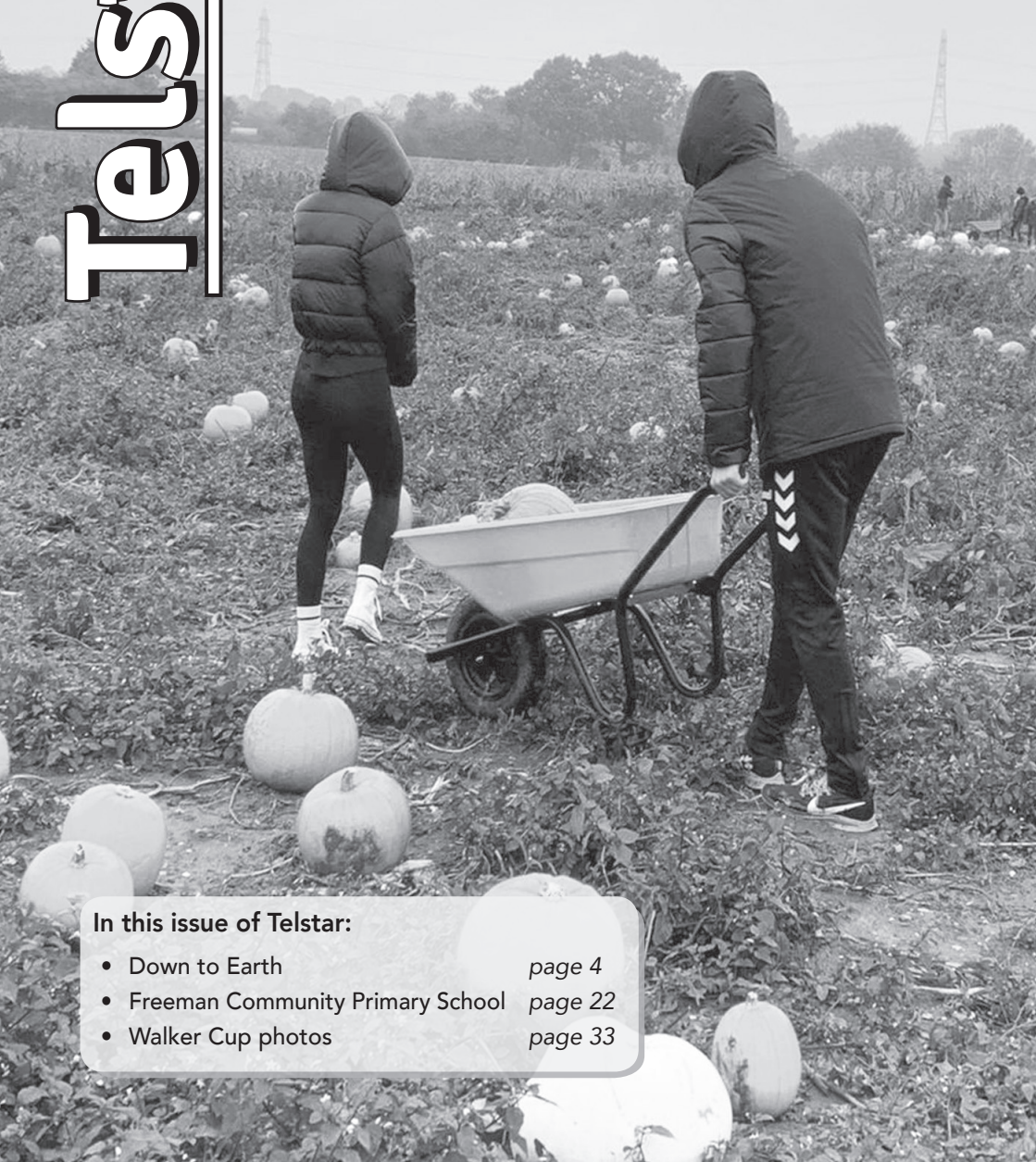


Telstar

Stowupland News

No 347
October 2021



In this issue of Telstar:

- Down to Earth *page 4*
- Freeman Community Primary School *page 22*
- Walker Cup photos *page 33*

MAKE A CHANGE BECOME A LOCAL COUNCILLOR



**IF YOU CARE ABOUT WHERE YOU LIVE AND
ARE PASSIONATE ABOUT YOUR
COMMUNITY, WE NEED YOU**

**JOIN US AND MAKE A LOCAL CHANGE
CONTACT**

parishclerk@stowuplandpc.co.uk

EDITOR'S NOTES

OCTOBER 2021



Well, here we are in October! Where did the year go? You will see on our front cover the gathering of pumpkins. I expect you will start seeing adverts for picking your own pumpkins, it's a fun thing to do, especially with children. It will be nice to see your Jack o' Lanterns around the village, please do send your pictures in so that I can share them with the whole village. In this country we are a bit lax on using the flesh from our pumpkins in cooking but I'm sure we are all familiar with the American Pumpkin Pie. Check out our recipe of the month for ideas for your pumpkin.

As Editor of Telstar I was invited along to the Zoom meeting with representatives of Taylor Wimpey regarding the site behind the allotments. Of course, I don't think anyone really wants another 300 houses in Stowupland, but at least we were given an opportunity to voice our concerns. As I'm not a councillor and probably have a different perspective, I was pleased to see that 53% of the site will be green space. We were told that the biodiversity of the area was expected to increase by 10% after the build is complete. I raised concerns about traffic and safety crossing the B1115 to access the village facilities. I also questioned the need for another pre-school. You can read more about the meeting in the Parish Council Report. I did also raise the question of medical facilities, doctors, and dentists, that all Stowmarket's surrounding villages use. The plans are very much in their early stages and as such there were no specifics on what type of homes would be built, I did ask a question about the demographic that Taylor Wimpey are targeting. I told them that I would prefer to see homes for everyone, from young singletons who want to stay in the village, to families of all sizes, to homes suitable for older residents who wish to downsize. I added the comment that I would wish to see them build a community rather than just sell houses. I have also invited them to send information, as it is available, to Telstar so that we can keep all our readers informed. Their response was that they will use Telstar to advertise community consultations. The olive branch has been extended, so I hope they will use it.

Our cricket club and bowls club have closed for the season but will be back next year! You can read their final round ups further along.

As things start to open up more, please support those who are trying to raise funds for charity who have been having a really hard time.

Kay
Editor

Front cover photograph by Ace Photographer, Keith Hyland.

DOWN TO EARTH

KATE ELLIOTT

Now, I know a lot of people will be thinking 'oh, autumn' and shut the shed door until spring, but the year isn't over. October is the start of a brand-new season with a rich tapestry of autumn colours and late flowers to look forward to.

Berries are the surprise gifts that light up autumn. A berry is defined as a fruit with the seeds wrapped in pulpy flesh, which attracts birds and animals to eat them, thus spreading the seed.

The berries that are probably the brightest thing in our gardens right now are the ornamental fruit of trees, shrubs and climbers such as roses, hollies and hawthorns, although there is a wide range of plants to choose from that will produce them.

The berries produced by roses - what we call rose hips - are varied, from great tomato-like ones on rugosa shrub roses to gobstoppers on Rosa 'Scharlachglut', oval aniseed balls on dog roses and black ones on Rosa pimpinellifolia. But my favourite one that we have growing here at Columbine for hips is Rosa Moyesii which has wonderful bottle-shaped orangey-red hips. A real cracker.



No plant makes more berries than pyracantha. The flowers are scented with a honey sweetness and bees love them. The more heat and sun that the plant gets the better the berries will be - which is why those trained against a brick wall display better thanks to the reflective warmth. The birds will eat them but not until they have stripped the hawthorns and other softer fruits, and if it is a mild winter they might be left completely alone. I like my pyracantha to be orange berried instead of yellow and the best one is Pyracantha 'Orange Glow'.

But if I had to choose just one plant for berries it has to be Callicarpa. The shrub is not up to much really - although it has a pleasantly orange autumnal leaf colour - it is the berries that is the reason for growing it. They are purple, distinctly metallic and grow in clusters along the stems. It is the most striking, eye-catching plant. Callicarpa bodinieri 'Profusion' is my favourite, also known as Beautyberry and you'll see why when you get one. It needs full sun to perform best and is ideal for growing in a pot so it can be moved into prominence when in berry. A must have.

There are not many American words I like, but the one that I love is 'fall' for autumn. In every way it perfectly suits the season with its falling leaves.

And there is no gardening substance so evocative, so clean to the touch as leaf mould. It smells deliciously like sunshine on the floor of a wood that is just emerging into spring. It is also enormously useful. Leaf mould makes a perfect addition in potting compost, it's ideal for mulching all woodland plants and when added to the soil it helps improve its structure. Unlike compost which needs turning regularly and has to be made up of a good mixture of ingredients to get the right balance, leaf mould is the easiest thing in the world to make. You just gather deciduous leaves and put them in a bay made from four posts and some chicken wire and let them quietly get on with the process of decomposition. Not every garden is large enough to have a permanent bay for leaves. The answer is to put the leaves in a black plastic bag, leaving the top turned but not tied. Make sure the leaves are really wet and punch a few holes in the side of the bag to drain any water. They will rot down well and can be stored behind a shed or tucked away in any corner.

When it is half-rotted - after about six months - I use it as a mulch around the plants in our bog garden and also put a layer on the bare soil in our walled vegetable garden. The worms work it in to make the richest most lovely tilth imaginable. When it is fully made and crumbly, I sieve it and add it as a component of my potting compost.

There are very few gardens that cannot make some leaf mould from their own trees and shrubs - let alone from the millions of leaves that fall outside our front doors. What are you waiting for? Go and make some now - and do not waste a crumb - or leaf of it.

Here are some more jobs that you can do before the end of October:

- Plant spring bulbs including crocuses and daffodils but leave planting tulips until November onwards to avoid tulip fire disease.
- Plant up cheery pot displays with winter colour, such as cyclamen, winter pansies and skimmia.
- Cover salad plants with cloches to prolong cropping.
- Finish picking runner beans and French beans, but leave a few pods to ripen so you can save the seed.
- Wash greenhouse glass to let in as much of the weaker autumn daylight as possible.
- Collect up hoses and store indoors over winter, so they don't freeze and split.
- Bring in all tender plants if not done so already.
- Plant garlic cloves in a sunny well-drained spot, 15cm apart, with their tip 5cm below the surface.
- Empty ceramic and glazed pots that aren't frost proof and store in a shed over winter.
- The sound of winter's marching footsteps can be heard over the horizon - so get outside and relish every second of sun.

**M & M Butchers
Mark Hammond**

Suppliers of high quality meats, poultry,
game and award winning sausages.

**Local Meats * Home Cooked Pies
Home Cooked Hams
Dry Cured Bacon & Gammon
Selection of Homemade Burgers
Big Selection of Specialist Cheese**

Local Delivery

Opening Hours

**Monday & Tuesday 6.30am to 1.00pm
Wednesday Thursday Friday 6.30am to 2.00pm
Saturday 6.30am to 12.30 pm**

The Green Stowupland Suffolk

IP14 4AR

Telephone :

01449 677720

COUNTRYSIDE RAMBLER

BRIAN WARD

The evenings are getting chilly and the nights are pulling in, a sure sign autumn is on its way. I do love all our seasons and autumn can bring us some nice surprises. Yes, all the autumn fruits and magnificent colours in our woodland, but please give us a few weeks of sunshine to brighten our last few months of 2021.

Last month I wrote about birds in the garden and on the same theme I was watching the pied wagtails, seven in all flitting across the lawn catching flies and to my utter surprise a male wheatear came from nowhere and joined them; it stayed for a few minutes and then flew easterly. I presume it is on its migratory route back to its wintering grounds. I have seen them locally but not in a garden.



With autumn just around the corner it is time to look out for fungi in the woods and pathways. Contact our local nature reserves as many organise fungi forays during the autumn months. Many of the older generation will recall collecting blackberries to make delicious crumbles, sloes to produce sloe gin (very potent) and crab apples to turn into crab apple jelly.

During autumn all our mammals will be searching for food in earnest to put on enough weight to help them through the winter months and, for some, hibernation. Badgers will gorge themselves on ripe fruit, especially blackberries. If you know of a badger's sett then it is probable a pathway from the sett will lead to a bramble patch at this time of year. Although we do not see them often bats will be on the wing every dry night to search for insects before they go to their winter roost sites to hibernate.

Our summer migrants are about to leave us and many have already gone. Swallows and martins have been congregating on the rooftops and wires in readiness to leave us for a warmer climate; I will be sorry to see them leave. It seems one day they are in the air above our houses, next day on a favourable wind they are gone, often flying at night to evade predators.

This time of year is good to start feeding the birds in your garden; a few feeders placed high and, if replenished regularly, the birds will find them and you will be rewarded with flocks of feathered beauties all through the winter.

Please all stay safe and well in these uncertain times.

JACK O' LANTERN



Jack O' Lantern's came about after an old Celtic story about Stingy Jack. Jack tried to trick the Devil and kept making deals to stop the Devil taking his soul. But Stingy Jack was a mean and dishonourable man. By the time he died and waited at the Pearly Gates for entry into Heaven he had done so many bad deeds and trickery that St Peter wouldn't let him in. He was sent to Hell, only to be refused entry as the Devil kept his word not to take his soul. So, Stingy Jack had nowhere to go and spends all eternity doomed to wander the Neverland alone. It is said that the Devil gave him an ember from hell to provide him with a light and he carved a lantern from a turnip he had in his pocket.

Traditionally, Jack O' Lanterns were carved from turnips, swedes or rutabagas. It was only when Irish immigrants took the tradition to America that pumpkins were used as they are easier to carve.

It gives an eerie meaning to trick or treat as that is exactly what got Stingy Jack into trouble in the first place!

These days, Jack O' Lanterns are said to ward off evil spirits.

Computer Repairs



Windows, MS Office, E-mail,
Internet, Broadband, Security

Solutions resolved remotely
(for those in self-isolation)
or in your own home

One to One tuition.

Phone Shelli of MPM on
01449 770704
07733 262116

Let a local company in Stowupland
support you.

RH Security & Electrical

Over 20 years industry experience

- Full or part re-wires
- Consumer unit upgrades
- Internal/external sockets & lights
- Under floor heating systems
- Recessed lights
- Home cinema systems
- Multi room audio systems
- CCTV (including remote viewing on smart phones)
- Automated gates
- Full public liability insurance

For a free no obligation quotation, please
contact us

Tel: 01449 614020

Mobile: 07909 524552

Email: richard@rhsecurityandelectrical.co.uk

Web: www.rhsecurityandelectrical.co.uk



TLA Photography



Local amateur wildlife & landscape photographer.

All of my images are available to view and purchase as mounted prints. Please visit

www.tlaphotography.co.uk

Free local delivery

Please feel free to contact me regarding availability.

Tony



E-mail – tlapix@talktalk.net

Facebook- TLA Photography

NRH

PATIOS & DRIVEWAYS LTD

BLOCK PAVING SPECIALISTS

- PATIOS
- DRIVEWAYS
- PATHS
- GARDEN WALLS
- TURFING
- SHINGLE DRIVES

**CALL US FOR A FREE ESTIMATE ON:
01449 613137 07771 728481**

**E: BRETTNOELHUBBARD@GMAIL.COM
WWW.NRH.BIZ**



BusyB

**Quality Dressmaking,
Alterations and Ladies Formal
Dress Hire**

A professional bespoke service from a friendly local dressmaker.

Also providing a hire service for ladies formal wear

Call for an obligation free quote.

Find me on Facebook as 'Bev Busyb'
or Google Maps – search for 'BusyB'

Tel: 01449 737618 Mob: 07753 177703

email: busybev@btopenworld.com

www.busybev.co.uk

JOHN BULL MOTORS LTD

**Petrol and Diesel
MOT testing
Servicing and repairs**

**Unit 7B Charles Ind. Estate
Stowmarket**

Phone: 01449 774150

Fax: 01449 675898

**Email:
Johnbullmotors@btconnect.com**

DISAPPOINTED

I am really disappointed that I only had one entry for the EACH Quiz I compiled for Telstar in the August Issue. It was a genuine attempt to raise funds for a worthwhile charity.

Thankfully, the Yard Sale had more people come forward.

Dave Brown

I too, am disappointed that there was so little interest in the quiz. I am always grateful for any contributions that are sent into Telstar. I know how time consuming it is to put together a quiz and am grateful to Dave for making the effort, especially as it was for charity, something I thought would be well supported. Well, at least I can say I won something, although I gave a donation rather than an entry fee.

Ed.

Telstar apologises for printing a poster with the wrong date for the free compost at Needham Market. This was due to an alteration by MSDC after we had gone to print and was beyond our control. We are sorry if you were inconvenienced.

Andrew Bingham

INDEPENDENT FUNERAL SERVICE

Stowmarkets Independent Family Funeral Service

24 Hour Personal Service • Private Chapel of Rest • FREE Parking



Telephone: **01449 771666**
www.andrewbingham.co.uk



The Nutshell, Milton Road South, Stowmarket, Suffolk IP14 1EZ

Golden Charter
Funeral Plans 

WILDFLOWER AND BIO-DIVERSITY GROUP

The second meeting of the newly formed Stowupland Wildflower & Biodiversity Group was held on 16th September. Two areas have been identified and permission gained for wildflower meadows, they are – a strip of land along the edge of The Green, in front of the cottages, and a strip of land from the pond leading to the kissing gate.

Permission is also being sought for an area within the High School ground that is part of the village green, it is hoped that the group can work alongside the High School who have their own biodiversity scheme.

The group is seeking funding from the District Council for the purchase of native bulbs and wildflower seed and for equipment. A leaflet has also been drafted with wildlife gardening, bird nesting box ideas etc. that could be distributed to all households in Stowupland with Telstar.

Keith Welham will be liaising with the Men's Shed group in Stowmarket to produce nesting boxes in kit form that could be assembled at a workshop session.

Thradstones Meadow, an historic meadow, will be an area managed by the parish council to revert to a wildflower meadow.

Three areas of orchard in the village, that will be probably managed by a separate orchard trust, have been identified. One is on the Linden Homes development, which has been set aside for an orchard but the type of trees to be planted are yet to be decided upon. Also, an area of existing orchard and a new orchard on ground that was once an ancient orchard, adjacent to the proposed Taylor Wimpey development. Advice on the management of orchards is being sought from the Suffolk Traditional Orchard Group.

Among the other areas that could be considered for re-wilding are the corner of the A1120 and Rendall Lane and a strip of The Green alongside the ditch in front of Birch Close. Another idea put forward was a labyrinth style spiral walk on the public open space at the front of the Bloor Homes development. For all these areas it would be good to arrange before and after photos.

The present plan is to hold two community event mornings to plant bulbs at half term – on Tuesday 26th and Saturday 30th October at 10am. Posters will be displayed on the village noticeboards and shared with social media to encourage people to get involved.

Anyone wanting further information on the group or wanting to become involved should get in touch with Kay Easter 16 Oak Road.
email kay.telstar@gmail.com

STOWMARKET ECO FUTURE GROUP

Greetings from Stowmarket Eco Future Group.

Its been a busy month. In September we took part in litter picks, continued the crisp packet collection, helped clear Balsam to allow natural plants to flourish, lobbied our MP about the debate reconsidering HS2, continued our Engine-Idling awareness campaign – this time with local schools. We've also been talking to the Museum of East Anglian Life about an exciting exhibition coming next year.



Have you discovered the **Choose Refills** mobile shop yet? It's a brilliant idea: locally made, environmentally friendly products coming to a location near you. A friend and I went along and it was a great feeling to come away with bottles filled and ready to use again, without generating any more plastic. On some things, it might be more expensive than the supermarket, but you are also paying the true price which is not "costing the earth" and supporting local makers into the bargain. More information on their website.

For **STOWUPLAND**, the time to put on your calendar is the **FIRST THURSDAY OF EVERY MONTH 2-4pm at the village hall**, but there are lots of other venues too, including Stowmarket Market on the fourth Thursday each month www.chooserefills.co.uk/find-us

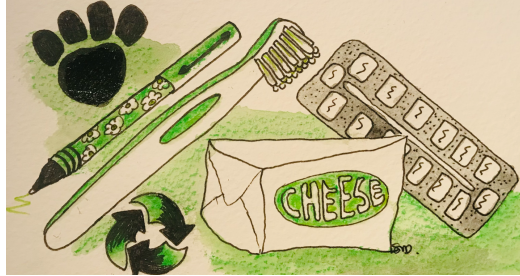


Recycling news!

Speaking of the Market, Stowmarket Eco Future Group are pleased to announce that we will be holding a stall on the **FOURTH THURSDAY OF EVERY MONTH 10 am to 12 noon** to collect hard-to-recycle items. We were inspired by a group in Haverhill who do this very successfully – a great example of towns learning from each other.

Please bring us:

1. Dry Pet food and Dog treat bags, wet pet food pouches (empty, clean and dry please)
2. Medicine Blister packs (empty)
3. Plastic toothbrushes, plastic toothpaste tubes and holders (empty) toothbrush heads, floss containers
4. Cheese wrappers and cheese nets
5. Any brand of pen, felt tip, highlighter, marker, correction fluid pot, correction tape, mechanical pencil, eraser pen regardless of their composition



Why not have a collecting point in your workplace, school, club, church ready to bring items along? If you would like to be on the rota to help at the market, please get in touch.

Stowmarketecofuture@gmail.com

JJ'S Waste Services

- All Types Of Rubbish Cleared
- End Of Tenancy
- Garden/Garage
- Office Clearance
- All Types Of Scrap Metal Collected

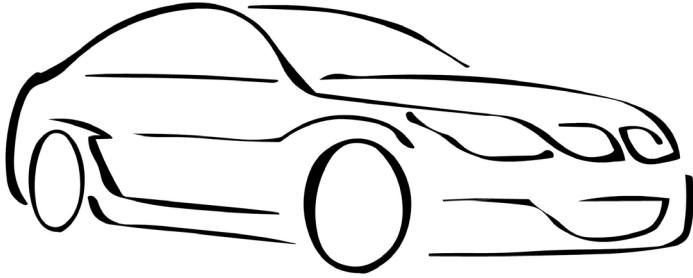
FULLY LICENCED

Call Us On: 07912 172826

www.suffolkwasteremoval.co.uk
johnjames1970@icloud.com

**LET'S
GET
WASTED**

FAST TEST STOWMARKET



MOT~SERVICING~AIR-CON

Fast Test can service all makes and models of cars and light commercial vans, as well as welding repairs, computer diagnostics and Air-Con re-gassing.

Fast Test can also offer a lift home or to work in the surrounding Stowmarket area or a courtesy vehicle.

Contact: Adam Bennett
Tel: 01449 770902

Address:
Unit 4, Tomo Business Park,
Tomo Road, Stowmarket,
Suffolk, IP14 5EP

07534 525 263
01449 258 254

Gidney 
Plumbing & Heating Ltd

Professional & Reliable Service



**Plumbing, Bathrooms, Heating, Boilers, Servicing,
Underfloor Heating, Tiling, New builds & Renovations**

enquiries@plumbinginsuffolk.com www.plumbinginsuffolk.com

CHIMNEY SWEEP

ECO SWEEP CHIMNEY SERVICES

- NEW POWER SWEEPING METHOD USED FOR A MORE THOROUGH CHIMNEY CLEAN THAN BRUSHES.
- INDUSTRIAL HEPA FILTERED VACUUM.
- FULLY INSURED.
- INSURANCE RECOGNIZED CERTIFICATES ISSUED.
- SPOTLESS, RELIABLE AND FRIENDLY SERVICE.
- ALL CHIMNEYS, WOOD BURNERS, AGA, BOILER FLUES SWEEP.
- GUILD OF MASTER SWEEPS CERTIFICATED MEMBER.



TEL. 01359 232335

COLNE ROOFING

Stowupland

Jon Johnson



Specialising in:

- New roofs
- Re-roofing
- Repairs
- Lead work
- Gutter maintenance



References upon request

Contact details:

07917 548441

colneroofing@gmail.com

Eastern Frames

Bespoke Framing Service

Greeting Cards & Photo Frames
X-Stitches Stretched & Framed

Fast & Reliable Service

www.EasternFrames.co.uk



Red House Farm,
Station Road
Haughley.

Tel. 01449 675897

Monday – Friday
9.00am – 5.00pm
Saturday
9.00am – 12noon



C.M. Hayward

Electrical Services

Lothlorien, Church Road,
Stowupland, Stowmarket,
Suffolk. IP14 4BH

01449 678213

A1

Locksmiths



**24 HOUR LOCKSMITH
BASED IN STOWUPLAND**

NO CALL OUT FEES
All locks supplied and fitted

TEL: 01449 673770
(HOME)

TEL: 07525 168895
(24 HOUR)



Email: arron@stowmarketlocksmiths.co.uk
www.a1carpentryandlocksmith.co.uk

*Fed up of running around
after your car?*

Why not give us the inconvenience
– it's part of our service

WE COLLECT & DELIVER

Servicing, Welding,
MOTs arranged
Air-conditioning recharged
General Repairs –
shocks, clutches, brakes etc
All work guaranteed

S & P Meta-care

Est 1990

Contact: Shane
Tel: 01449 771102 or 07802 545737

**Personal Service at
Competitive Rates!**



LOCAL HISTORY GROUP

By the time you read this we will have welcomed **Gill Blanchard**. She gave us a fascinating glimpse into research behind the scenes of **'Who Do You think you are?'** Jerry's report will appear in next month's Telstar, but here he writes about our August speaker.

Charlie Haylock and "The Dig". On 4th August, 48 members and guests of SLHG were treated to an evening of classic comedy with Charlie Haylock and his talk on how he got involved as a "dialogue coach" on the shooting of the film "The Dig". This told the story of the how the remains of a ship were uncovered in Suffolk in the summer of 1939.

The story was adapted from the novel by John Gresham. Charlie told how he nearly missed out on the chance to be involved when he received an untitled e-mail from an unknown source that he did not recognise. His IT skills told him not to open it, he did not delete it but did not answer it. However, the sender was not to be deterred and the same turned up a few days later. This time Charlie did not ignore it but rang the number given in the email. He found himself talking to the Director of the film, and he agreed to send Charlie a draft script of the proposed film. This duly turned up and on reading the script, Charlie spent two days adapting it into "Suffolk Dialogue" to suit the Suffolk way of life and how it would have been in the time of the "Dig". He did wonder as he did this whether the film company would accept this new take on the script, but felt it was worth it at the time as he wanted the script to be as near the timescale of the "Dig" as possible.

Meeting the director and Ralph Fiennes (who was to play the lead role of Basil Brown, who was in charge of the "Dig" at the time in 1939) on Colchester station, he found that his alteration to the script had been accepted by the film company and he was offered the role as **'dialogue coach'** for the film. Initially he was hired for two hours a day on set to coach the cast in the ways of the Suffolk accent. He found that they were all very accommodating but as most of the cast were not from Suffolk it was hard work. It became obvious to Charlie that 2 hours a day on set was just not enough to get everyone up to scratch. So, the director agreed to Charlie being available to the cast on-set for 8 hours a day if so needed. So began 6am starts till 8pm or later, depending on how it was all going. The film Director insisted that the cast were on time for Charlie's sessions and if not, they were not allowed to take part in the filming. This worked well and all the cast got into their parts very well. While on-set Charlie and Ralph became good friends, and he took Ralph around to a number of Suffolk pubs. This caused a good deal of laughter, as he would enter 'in character' as Basil Brown and they played out many a scene in the manner after a hard day of shooting.

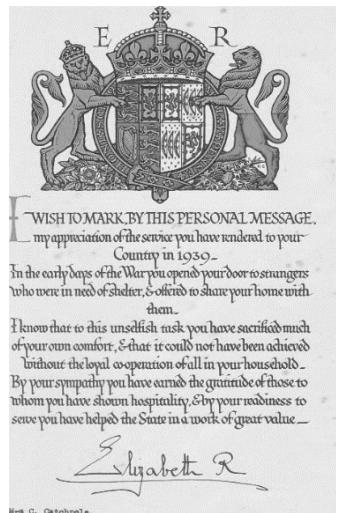
Wandering around the set one day Charlie was introduced to a young lady, who had recently arrived to assist filming. On being introduced, Charlie asked what she did, and was told she was the **"Intimacy Coordinator,"** for the love scene in the film. Charlie had never heard of this role and repeated the story at the pub on his night out with "Basil Brown." In the bar was an eighty-five year old lady, who, with a twinkle in her eye, looked up as Charlie was telling the story and said that she wished there was an "intimacy coordinator" around when she had married her husband in the early 1930's.

Charlie did a question-and-answer session after his talk. It was clear Charlie had certainly enjoyed his time on set with the film crew. It was also good to be able to have refreshments again at the end of the presentation in the village hall and nice to have a fair bit of comedy to talk about in these difficult times.

From our Archives...

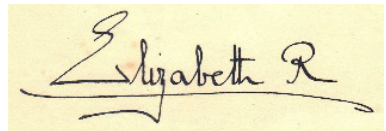
Thinking of difficult times reminded me that I promised to write about **Stowupland's wartime evacuees.** Our research is still ongoing but here is some of the story so far. Our search was triggered by 4 things:

- This certificate from our Archives.
- An entry in a 1939 diary that told us the **'Ilford evacuees'** had arrived.
- The 1939 Register (or War Survey)
- Local knowledge



And now Neil has been able to recommence searching through the documents at The Hold he has added to our knowledge.

Our interest started with a colourful and ornate certificate. It had been sent to a local resident, Mrs. C. Catchpole, whose family donated it to our archives.



This image shows only a part and is not so impressive in black and white. It was postmarked Buckingham Palace, GR and signed with a royal flourish, though not our reigning monarch. It refers to **'Strangers'** so we wondered if these were American airmen, POW's or might they have been our evacuees? An internet search confirmed that certificates like this were sent out in 1945 to families who had taken in evacuees during WW2.



Mrs Catchpole's daughter Margaret was 30 at the start of WW2. She was a sporadic diary keeper but knowing we had her 1939 diary I had high hopes. She did not disappoint, though I would have liked more. On Friday 1st September 1939 she had written **'Ilford evacuees arrive, Robert Colman age 6 1/2 comes here'**. 2 days later she noted, **'Church a.m. war declared, evening services suspended'**. Then just 9 days later she wrote that Robert's mother had arrived to collect him.

Neil found from entries in the Stowupland School Log Book that the numbers of evacuees staying in Stowupland did fluctuate. In September 1939 the first and largest group arrived, 92 children with some teachers. Others arrived later and some left to go home but then returned. The 1939 Register (or War Survey was similar in format to earlier census documents) has helped in locating where some of these children stayed but many names are redacted (i.e., the only names we can read are those who can no longer tell their story). More research is needed to separate the Ilford evacuees from any nieces, nephews or grandchildren who were living with relatives.

From the war survey we know that the Catchpole's did have a Patricia Ellis (age 6 ½,) staying with them at the end of September 1939. Although Margaret does not name Patricia in her diaries she did record visits from a Mrs Ellis and in December she writes of a Mrs Ellis who travelled by train to visit and on 27th December: they **'went to an entertainment given by the evacuees.'**

Knowledge from local residents has proved invaluable in filling in some blanks. Jerry and I have spoken with John Hill. Although not old enough to remember the evacuees arriving, his family welcomed several youngsters into their homes, and he has kept in touch with some over the years. Through him we have been in touch with Wanda Lee and Doreen Quelch. I am not sure my recall of my primary school days comes anywhere near their recollections.

Wanda and Doreen remembered arriving by train with their gas masks and just a few possessions in rucksacks. Having arrived in Stowupland they were first taken to the primary school to be selected by a local family.

Those children going to stay along the Back or Gipping Road walked from the school, down Church Road past Barn Cottages, along Rendall Land and so to their new homes. We can only try to imagine the contrast between the sights, sound and smells these children experienced on that walk compared to what they had left behind.



The Wilden's garden with some evacuees and Auntie May.

Wanda told me her father accompanied her to Stowupland. It must have been an emotional journey as he had just lost his wife and mother-in-law and was taking his young daughter to leave her with strangers. She told me how, 80 years later she still remembered being rescued from the rubble of her Nan's bombed out house in Forest Gate. Her Nan was killed, her mother though alive had been blinded and lost both legs. They were taken to a local hospital by bus, and she still recalled the sight of flickering red flames against the darkened sky. Then she told me she had spent her 6th birthday holding her dying mother's hand.

Wanda stayed in a cottage opposite 30 The Bungalows with May and Hector Wilden, or Auntie May as she called her. Both Wanda and Doreen loved their time in Stowupland. Wanda did not want to leave her new home, but after her father remarried, he wanted her back with him. Others like Doreen stayed in the village even after the war ended, going to Stowmarket to complete their Secondary education (Stowupland didn't have a Senior School).

Despite the adjustments the school had to make to accommodate the large influx of children they remembered being made to feel very welcome. Miss Kinch was remembered as strict but very kind. They didn't recall any male teachers, but a Mr Brett who was an elementary school teacher staying at Green Farm, was recalled to Ilford in April 1940 leaving the school board having to rearrange classes.

They remembered some 12 young visitors, and added there were others staying in surrounding villages. Since Neil's research indicated that there were far more than 12, these may have been just those who stayed near the Green. In the first month school was 'to be held in 2 shifts, 9 to 12 and 1 to 3:45, with a canteen being organised'. Over the following year the evacuees were merged with the local children and neither Doreen nor Wanda remembered the children being segregated. The Boys Brigade hut was used to provide additional classroom space.

Sundays they went to chapel walking along a cinder track across Allard's fields and being scared of the cows. They recalled seeing land girls taking bulls (or maybe big cows) down the road from Columbine Hall to graze on the Green. Boys staying with the Potters at Columbine Hall were encouraged to help with the farm work. Local children introduced them to the joy of swimming in the 'tin ponds' on The Green.

Some other children were staying in The Bungalows along Back Lane were Pamela Emmings (age 9), who stayed with the Cubitt family whilst her mother Edith was working at Croft Farm, Gipping; Kenneth and his sister were at Mrs (Fanny) Stannard, Freda Quelch was with Doreen at Daisy Hill's.

Other visitors were: Christine Jiggins who went to Cubitt's Farm and 'walked across two meadows' to get to school; Brian Hart (9) and Ian McPherson were at Columbine Hall and when Ian left to return to the family home Brian was joined by Maurice King and George Shepherd; at Green Farm, George and Elsie Carter had Jean Ewen (7); Brian Howell (10) was with Arthur and Christina Finbow at Pasture Farm; at Gipping Cottage,

Sydney and Eva Hammond took in Maurice Perry (8); the Lockwood's had William Stewart (8); Samuel and Alice Bowyer had Leslie W. Wright (12) staying and Edna Baker (10); Mary Mannin had Oliver Dann (7); in Saxham Street, Alan and David Kramer were with Mr and Mrs Rogers in Rainbow Cottage; on The Green, a Brame family took in Leslie Greenblatt.

So, until we meet again, if you have any queries about SLHG or can share any memories of wartime Stowupland please contact: **Jerry Voden, 01449 703717; voden@btinternet.com**

.....
Details of forthcoming events from Neil Langridge as follows -

Oct 6 Suffolk Witches by Pip Wright. Pip who has spoken many times to our group returns. This time he looks at the fear and persecution of "witches" that peaked in the mid-17th century especially in East Anglia. Matthew Hopkins the self-styled "Witchfinder General" was in demand in the 1640s visiting Stowmarket where the town had to levy a special rate to pay for his fee and expenses.

Nov 3 "What Lies Beneath?" – The Trinity Meadows dig by Robin Webb, Oxford Archaeology. The findings of the two excavations that were carried out by Oxford Archaeology ahead of the residential development between Gipping Lane and Church Road. There will also be a small display of artefacts found.

And don't forget to check out www.stowuplandlocalhistorygroup.org.

MEMORY LANE

In the Stowupland Local History Group article you will be able to read about the evacuees that came to Stowupland.

Do you recognise any of the faces or recall those times?





Community
Primary School

Although it will be October when you read this, at the time of writing we had only been back at school for just over a week. Things are getting back to normal although normal seems very strange! The masks and bubbles have gone and singing can be heard in assembly at last. Fingers-crossed this is still continuing by the time you read this article.

Despite the fact the children have only been back for a week, they have already been busy. The Year 6s have started swimming lessons – our first school swimming lessons since before Covid! The Year 3s have started their term of Forest School and we have welcomed our new Reception children who, after a gradual start to help them settle in, are now together as a class.

As part of our monthly article for Telstar we will be taking it in turns to focus on one of our classes each month and bring you up-to-date with their latest news. This month we will look at Willow class, our Year 5 children.

Willow Class News

Our Willow Class teacher is Miss Murton. This is her second year with Freeman CP School and although she was only starting her teaching career when she joined us, she is proving to be a natural and very popular with the children.



During our first week back at school after the summer, Willow class completed some English work outside making the most of the warm weather. Their task was to make a flip book based on the story 'Something Fishy' that they had read in class. Not only did they enjoy making their flip books but they also enjoyed working in our outside quiet area in the fresh air.



In Geography, the children completed some investigative work, learning about tectonic plates in a very imaginative way. Miss Murton filled trays with custard representing the earth's mantle and bricks of chocolate on top representing the earth's crust.

The children then predicted what would happen to the mantle when the crust moved in different ways and saw how it can cause natural disasters. They were able to understand how an earthquake was caused and even how a volcano was formed.

They found it very interesting and managed to resist eating any of the mantle or crust!

In Science, Willow class started their new topic of properties and changes of materials by learning about thermal insulators and conductors.

Using a container of warm water, and materials such as foil, fabric and tissue paper, the children predicted which material would keep the water warm the longest and then tested the materials to see if their predictions were correct.

Next, they're moving on to electrical conductors and insulators, experimenting using circuits.



Finally, as part of the music curriculum, the Year 5 children have the opportunity to learn an instrument together as a class through Suffolk County Music's Whole Class Ensemble Teaching programme.

This year, Willow Class are learning how to play the guitar. Here they are in their first lesson where they learnt how to hold the guitar and play notes E, G and B. Their teacher, Mr Watson from Suffolk County Music, was very impressed with their focus and effort. Prior to Covid, the children performed to parents and carers at the Apex in Bury St Edmunds at the end of the academic year so parents/carers could see what they had learnt.



Hopefully this will return next year.

We hope you've enjoyed reading about what Willow have been up to and we will be back next month with news from another one of our classes.

From tiny acorns do mighty oaks grow

RECIPE OF THE MONTH

Pumpkin and Ricotta Lasagne

Serves 6

Preparation time 40 minutes

Cooking time 1 hour

1.2kg pumpkin, peeled and cut into 2cm pieces
2 tbsp olive oil
¼ tsp chilli flakes
1 tbsp chopped sage
200g mushrooms, sliced
1 clove of garlic, minced
2 tbsp chopped walnuts
¼ tsp freshly grated nutmeg
350g Ricotta
1 egg
200g spinach, washed and chopped
200g grated parmesan, plus extra to serve
8 fresh lasagne sheets
Seasoning

Preheat the oven to 200C fan/gas 5 and place the pumpkin on a baking tray, drizzle with oil, sprinkle with chilli flakes and season. Cover with foil and roast for 25 minutes or until the pumpkin is tender. Allow to cool slightly. Meanwhile, fry the mushrooms, garlic, sage and walnuts together until lightly browned, then add the spinach and cook for a further one minute. Set aside.

Next, puree the pumpkin in a food processor with the nutmeg. Set aside. Clean the processor then process the ricotta, egg, parmesan and a good grinding of salt and pepper.

Lightly grease a 24cm square baking dish. Lay two lasagne sheets over the base and spread with half the pumpkin and half the spinach mixture. Add another layer of lasagne sheets, then spread with half the ricotta. Repeat the process then sprinkle the final layer of ricotta with extra parmesan. Lay a sheet of baking paper over the surface, cover with foil, and bake for 35 minutes. Uncover and bake for a further 15 minutes or until golden.

Leave to stand for 5 minutes and serve.

Courtesy of Kitchen Garden Magazine.

IMPORTANT CONTACTS

Citizens Advice

www.midsuffolkcab.org.uk - 01449 676060
or 01449 676280 - 5 Milton Road South,
Stowmarket, IP14 1EZ

Doctor

Emergency - 999
NHS Direct - 111
Combs Ford - 01449 678333
Stowhealth - 01449 776000

Emergency Numbers

Power Cut - 0800 31 63 105
Gas Leak - 0800 111 999
Water Leak - 0800 771 881

Good Neighbour Scheme

HELPLINE: 07591 539621

Member of Parliament

Jo Churchill - jo.churchill.mp@parliament.uk -
Constituency Office, 10 Hatter Street,
Bury St Edmunds, IP33 1LZ - 01284 752311
House of Commons - 02072 198487
<https://www.jochurchill.org.uk/>

Mid Suffolk District Council

www.midsuffolk.gov.uk
Keith Welham - keith.welham@midsuffolk.gov.uk -
01449 673185

Police

<http://www.suffolk.police.uk/contact-us>
<https://www.suffolk.police.uk/advice>

Police Safer Neighbourhood Team

PC 14443 Stefan Henriksen - Police Station,
Violet Hill Road, Stowmarket, IP14 1NJ
stefan.henriksen@suffolk.pnn.police.uk - Phone: 101

Samaritans – 116 123

Stowupland Village Website

www.stowupland.com

Parish Council Website

www.stowupland.suffolk.cloud

Suffolk County Council

www.suffolk.gov.uk 01449 673185
Keith Welham - Keith.Welham@suffolk.gov.uk
SCC – General Contact No. 0345 606 6067

Schools

Stowupland High School -
www.stowuplandhighschool.co.uk - 01449 674827
Freeman Community Primary School -
www.freeman.suffolk.sch.uk - 01449 612067

Vets

Cedarwood - 01449 676966
Stowe Vets - 01449 613130

DIARY DATES

OCTOBER

MON 4	Evening Village hall	Dance
TUES 5	Jubilee Crt. 9.30. Green 9.55	Mobile library
WED 6	9.30 am Village hall	Baby and toddler group
WED 6	2 - 4 pm Village hall car park	Mobile post office
WED 6 Wright	7.30 pm Village hall	Local history group – “Suffolk Witches” by Pip
THURS 7	2 – 4 pm Village hall car park	Choose Refills pop-up shop
THURS 7	7.00 pm Village hall	Short mat bowls
MON 11	evening Village hall	Dance
WED 13	9.30 am Village hall	Baby and toddler group
WED 13	2 - 4 pm Village hall car park	Mobile post office
THURS 14	7.30 pm Bowls Club Pavilion	Parish Council meeting
THURS 14	7.00 pm Village hall	Short mat bowls
SAT 16	7.00 pm Village hall	Short mat bowls
SUN 17	7.30 pm Village hall	Country and Western music club – Gary Leonard
MON 18	evening Village hall	Dance
WED 20	9.30 am Village hall	Baby and toddler group

WED 20	2 - 4 pm Village hall car park	Mobile post office
THURS 21	7.00 pm Village hall	Short mat bowls
SUN 24	7.30 pm Village hall	Country and Western music club – Marc James
MON 25	evening Village hall	Dance
TUES 26	10.00 – 12.00 bulb planting	The Green
WED 27	9.30 am Village Hall	Baby and toddler group
WED 27	2 - 4 pm Village hall car park	Mobile post office
WED 27	7.30 pm Village hall	Suffolk Wildlife Trust “Bugs on the Move”
THURS 28	7.00 pm Village hall	Short mat bowls
FRI 29	10 am URC church	Coffee morning
SAT 30	10.00 – 12.00 bulb planting	The Green

NOVEMBER

MON 1	evening Village hall	Dance
TUES 2	Jubilee Crt. 9.30. Green 9.55	Mobile library
WED 3	9.30 am Village hall	Baby and toddler group
WED 3	2 - 4 pm Village hall car park	Mobile post office
WED 3	7.30 pm Village hall	Local history group (see LHG page for details of talk)
THURS 3	2 – 4 pm Village hall car park	Choose Refills pop-up shop
THURS 4	7.00 pm Village hall	Short mat bowls

Rachel Eburne - rachel.eburne@midsuffolk.gov.uk -
01449 673311

MSDC General Contact No. 0300 1234000

Mobile Library - 07721 879855

Parish Council

Sally Reeves – Chairman - 01449 745739
sallyreeves@stowuplandpc.co.uk

Laura Beeson - 07918 808387

laurabeeson@stowuplandpc.co.uk

John Hayward – 01449 674717

johnhayward@stowuplandpc.co.uk

Laura Johnson - 07826 851030

laurajohnson@stowuplandpc.co.uk

Debra Melhuish -07979125904

debramelhuish@stowuplandpc.co.uk

Paula Murton - 07906 677817

paulamurton@stowuplandpc.co.uk

Ray Studd - 01449 676606

raystudd@stowuplandpc.co.uk

Jerry Voden - 01449 703717

jerryvoden@stowuplandpc.co.uk

Clerk to the Parish Council – Claire Pizzey
parishclerk@stowuplandpc.co.uk - 01449 677005

2 Broomspath Road, IP14 4DB

*Parish Council Minutes of meetings and agendas are
available on the Parish Council Website
www.stowupland.suffolk.cloud*

Village Hall Bookings

Colin Booker - Phone - 07862740830
stowuplandvillagehallbookings@gmail.com

Village Clubs

Baby and Toddler Group -

Kelly Woolhough - 07776 206430

Book Group - Patricia Hodgkins - 01449 672127

Stowupland Bowls Club - Graham Newman -
01359 240846

Community Events - Keith Welham - 01449 673185

Country and Western - Pat Murphy - 01449 677405

Dance Club - Mary Durham - 01449 672601

Local History Group - Jerry Voden - 07951 086383

Short Mat Bowls - Pam Fayers - 01449 770080

Sports and Social Club - Andy Parkin - 07796 274905

- www.stowupland-sports-and-social-club.co.uk

Stowupland Cricket Club

www.stowuplandcricketclub.co.uk/

Stowupland Falcons Football Club -

stowuplandfalconsfc.co.uk

Stowupland Sports Centre -

info@stowuplandssportcentre.co.uk - 01449 672531

Stowupland Wildflower & Biodiversity Group –

kay.telstar@gmail.com

Stowmarket Wildlife Group - John Thompson -

swtstowmarket@gmail.com - 01449 676471

ANTIQUE & COLLECTABLES FAIR

SUNDAY 7th NOVEMBER 2021

SET-UP AT 10.30am - FAIR CLOSES AT 4.30pm

AT STOWUPLAND VILLAGE HALL ON THE A1120

A GREAT SPACE WITH TOILETS FOR LADIES, GENTS AND A BABY CHANGING ROOM.

THERE IS A KITCHEN WITH VENDOR SUPPLYING TEA AND COFFEE

ALSO SNACKS THROUGHOUT THE DAY.

SPACE FOR 20 VENDORS WITH TABLES AND CHAIRS ON SITE

PLENTY OF FREE PARKING

ADMISSION OF £ 1.00 WHICH IS IN AID OF MAKE-A-WISH CHILDREN'S CHARITY

IF YOU WOULD LIKE TO BOOK A SPACE FOR THE NOVEMBER FAIR,

PLEASE CONTACT 07900640441

OR EMAIL annstoneman@hotmail.co.uk

WHEN BOOKING WE WILL REQUIRE PAYMENT OF £10.00

WHICH WILL BE THE COST OF YOUR SPACE

DONT LEAVE IT TOO LATE TO BOOK

AS SPACES ARE GOING QUITE QUICKLY

Go That Extra Mile --- or Two!



They're closing roads all over.

Diversion signs are placed
At the side of public highways,

To stop us in our haste.

But wait a minute, hang on,

Diversions may not suit.

They take us off the beaten track,

On a further, longer route.

When we meet a road that's faulty,

It's easy to despair.

Remember why that sign says "Closed",

Maybe a road repair.

Next time I'm at a junction,

In the road ahead a crater,

I know I have the karma,

Road closed, stuff broke --- fix later!

The Really Lovely Poetry Company R.R.G.



**You could advertise your
business here for only:**

£10 per month
(Quarter Page)

£20 per month
(Half Page)

£40 per month
(Whole Page)

Please contact:
Sally Wray by email
adverts.telstar@hotmail.co.uk

Choose Refills 

Mobile Eco Refill Shop

**We are coming to Stowupland
on the first Thursday of each
month from 2-4pm so pop and
see us at the village hall**

Simply bring your empty bottles along
and we can refill or purchase prefilled
reusable bottles ready for next time.

Try our zero and low waste refilling station
for eco-friendly and vegan household
cleaning and laundry liquids and hair and
body products.

Buy what you need without unnecessary
packaging.

For orders and more information visit :

www.chooserefills.co.uk

Free Delivery for orders over £10

STOWUPLAND CRICKET CLUB

Alongside the usual matches, August saw the inaugural Alan Clarke Memorial Day take place. This was a fun-filled day of 6-a-side matches with adults and youngsters playing in mixed teams with plenty of food, drink, and laughter.



Alan was a great supporter of the club and has kindly left a donation for a digital scoreboard to be installed which will take place in time for the start of the 2022 season. It is likely the Memorial Day will become an annual event to celebrate all that is good about cricket.

After a couple of rainy weeks, the 1st XI cruised to victory against Great Bromley on 21st August with a fabulous innings of 120 from Tom Wray, backed up by 62 from Lucas Howard. Three wickets for Kieran Gregory and two apiece for Louis Blanchard and Joe Marsh gave the home team the win by 124 runs. The following week the team narrowly lost to East Bergholt. However, the following Saturday the team came back strongly to win against Battisford who had beaten them early in the season. An excellent 83* for George Yardley was backed up with some great bowling performances, Dan Marsh the pick of the bowlers with 3 wickets.

The 2nd XI had only 2 matches during this period and lost both, but some excellent performances were seen in both games. On 21st August the team played Bury 4th XI and Akshay John scored 95* backed by a great 30 from Charlotte Oastler. The next game on 4th September was against Woolpit 4th XI. Dan Webb scored a fabulous 61 and there was a very useful 19 from 12 year old Malan Du Toit who also took 1 wicket. The home side however, proved too strong, winning by 42 runs.

With just one game left for each side it's time to sign off for the season. Watch this space, however, for details of the monthly quiz likely to begin again soon.

For further information about Stowupland Cricket Club please email Melanie Blanchard - mcblanch@hotmail.co.uk



THE WALTERS CUP
ANNUAL SPONSORED WALK 2021
 Between 7th October and 23rd November 2021
 Between 7th October and 23rd November 2021
 Between 7th October and 23rd November 2021
 Between 7th October and 23rd November 2021
 Between 7th October and 23rd November 2021
 Between 7th October and 23rd November 2021

Name	Team	Number	Completed
01/10	11-05	11/05	✓
02/10	11-05	11/05	✓
03/10	11-05	11/05	✓
04/10	11-05	11/05	✓
05/10	11-05	11/05	✓
06/10	11-05	11/05	✓
07/10	11-05	11/05	✓
08/10	11-05	11/05	✓
09/10	11-05	11/05	✓
10/10	11-05	11/05	✓
11/10	11-05	11/05	✓
12/10	11-05	11/05	✓
13/10	11-05	11/05	✓
14/10	11-05	11/05	✓
15/10	11-05	11/05	✓
16/10	11-05	11/05	✓
17/10	11-05	11/05	✓
18/10	11-05	11/05	✓
19/10	11-05	11/05	✓
20/10	11-05	11/05	✓
21/10	11-05	11/05	✓
22/10	11-05	11/05	✓
23/10	11-05	11/05	✓

WALKER'S CUP 2021

Well done to everyone who took part in the Walker's Cup Challenge, all 97 of you (along with a lot of four-legged friends). It was a lovely day for a walk which was obviously more tiring for some than others! I can honestly say I was tuckered when I got back to The Retreat but that is probably testament to how old and unfit I am! We passed lots of friends along the way not least Telstar Correspondent Sam, our resident poet Dan, along with many councillors (of the Parish and District kind). We were met with friendly faces at Old Newton and good comradery along the way. I understand we have retained the Cup!

I asked lots of you if I could take your pictures for Telstar and you were very obliging, thank you. If you can't see yourself, put it down to my dodgy photography, I've included as many as I could.

Kay

Needham Market Aerials

Your local TV aerial installer



For over thirty years, Needham Market Aerials has provided excellent customer service and quality products to ensure properties across the area receive the best TV coverage available.

- TV and satellite installation and repairs
- TV wall mounting installation and advice
- WiFi enhancements
- CCTV installation and advice

cai
Association For
Audio Visual Professionals

NMA

FOR 10% OFF
...TV aerial installations for new build homes visit www.nmasuffolk.co.uk/newaerialinstallation

Request a free quote now on www.nmasuffolk.co.uk or call **01449 721100**

STOWUPLAND BOWLS CLUB

Hello everybody,

Sadly, our resident reporter David Begg, has been seriously ill in hospital but is coming home soon. We wish him well and our thoughts are with him and his family.

The League bowling season has now drawn to a close and the green will close in the middle of September after members have a few more days of relaxed bowling.

Teams in the league performed very well considering the Covid restrictions, which meant fewer teams taking place. We played 39 games during the league season. We Won 22, Lost 16, and had 1 Draw. All the games were enjoyed by the members which is very much part of the sport, although we all do like to win.

The teams finished 7th in the Monday league, top in the Tuesday league and 3rd in the Wednesday league, a good result all round.

The green will be reseeded, top dressed and, as we say, put to bed until next season with the greenkeeper giving it a liquid feed as and when he feels it is needed.

Hedge cutting will take place during the school half term so as not to disrupt the coming and goings of the school children.

On September 11th we held a targets game for members with a barbecue lunch, and tea and cake afterwards. It was a fun afternoon and, everyone who was able, competed. The winners were Margaret Newman for the ladies and Frank Boxall for the men, who both received a celebratory bottle of wine for their efforts. We also held a raffle and were able to donate £80 to St Nicholas Hospice.

I would like to wish all the readers good health, a Happy Christmas (I know it is a bit early) but there, time flies. I would like to see new faces next year, trying their hand at bowling. If you are mobile, can bend a little and like fresh air come and see us, you will receive a warm welcome.

Frank Boxall, Chairman

A message from the editor

As many of our readers know we were welcomed into the fold of our local bowls club last April. I reported on our trials and tribulations at the time, it was a bit of a learning curve! Through much encouragement, we have continued throughout the summer and have thoroughly enjoyed our time with the club. Our game has much improved, hopefully enough that we will be able to play in the League next year! We wish to extend our thanks to all those who welcomed and encouraged us and taught us how to play. Particularly, I would like to thank David who, through his cajoling in our email correspondence, encouraged us to go along and 'have a go'. He, and his wife Brenda, have been exceptionally supportive. Our thoughts are with David and Brenda at this difficult time.

Kay & Terry

STOWUPLAND SHORT MAT BOWLS IS BACK

We are glad to be back bowling in the village hall on Thursday evenings from 7.00 to 9.30. We bowl all through the year. We are following Covid guidelines to protect everyone.

The club has gained a safe bowls certificate issued by the National body (ESMBA) which requires us to carry out more strict safety guidelines for the safety of all our members. At present the club welcomes new members who have had 2 Covid vaccinations.

If you are new to bowls we have bowls for you to use but please bring indoor flat shoes (slippers). We are very happy to teach you. If you have your own bowls and shoes please bring them.

Please come and give us a look; for further information contact John on 07714693365 or Pam on 07713026696.

HOLY TRINITY CHURCH

NEWS

HOLY TRINITY CHURCH
STOWE, IRELAND



Vicar : Revd Brin Singleton Tel. 770921

Churchwardens : Mrs Ann Doubtfire Tel. 770363

: Mrs Sue Hayter Tel. 613710

Email: brinsingleton@btinternet.com

<https://www.achurchnearyou.com/church/2082/benefice/>

Dear Friend

Whatever the outcome of the Glasgow Climate Change Conference, as I write we hear Greta Thunberg's expectation of its effecting any change in the present trajectory of climate change as low. Not an unreasonable view, for we rarely take notice of things unseen or at least things not happening to ourselves and those nations least responsible, yet in most immediate danger, don't have a voice. The urgency with which we need to dismantle our carbon economy seems both beyond overstatement and beyond us. All too slowly we are beginning to see that the more gradual the brake we apply to carbon emission the more catastrophic will be the change for life on earth.

Harvest has always been a time of thanksgiving both for those who provide and for the provision of our daily bread as the prayer Jesus taught us has it. Yet the rise of a culture that measures daily bread as more of everything, has brought us to this perilous imbalance between those nations rejoicing in Harvest celebrating expected and continual improvement in living standards, supply and choice, and those nations harvesting the devastation wrought upon them by such carbon dependent growth lifestyle and industry.

The Creation narratives of the Judaic, Islamic, and Christian faiths begin with God's creative provision and humankind set in creation's garden, a time when God's provision is seen sufficient to all our need. This story of Creation set our want for more beyond the Eden God gifted for us, where we were to share with all creation in fullness of life. (John 10.10). The abundance we have taken for ourselves, we need to see as taken from others, our daily bread has been at others' expense, at creation's expense. Yet, what will bring us to change our course that all may share fullness of life, that daily bread may offer enough for all, over our want of it all?

The tragedy of pandemic briefly brought about something of the scale of change our travel, industry, and lifestyle needs to secure, though at a price beyond acceptance. Yet we have seen that to expect less, to go without, to give to others, time, food, goods, has not been to diminish, but to enrich that fullness of life to which we aspire. Pray at our Harvest time we may be learning to count the cost, that with thankfulness we may aspire to share the blessing of daily bread in fullness of life for all.

Yours in Christ, *Brin*, Rector
@ Haughley with Wetherden and Stowupland
www.achurchnearyou.com

PLEASE NOTE: All services may be subjected to change by government rules in force at that time.

Services in October 2021

3rd Oct	10.30am	Harvest Festival at the URC
10th Oct	9.30am	Worship For All
17th Oct	9.30am	Morning Prayer
24th Oct	6.30pm	Benefice Communion at Stowupland
31st Oct	3.00pm	Annual Memorial Service

ACHurchNearYou – Stowupland
<https://www.achurchnearyou.com/church/2086/>

Sunday October 31st at 3pm - Thanksgiving & Memorial Service

This will be an occasion on which we remember and give thanks for those 'whom we love but see no longer'. If you are someone who has been bereaved, you will find it a helpful and hopeful service.

Within the service there will be an opportunity for everyone to remember their own special loved one, including by lighting a candle for them, if they wish. All are welcome. If you know of anyone who might like to come, please assure them that they will be welcome.



U.R.C CHAPEL

NEWS

*Minister: Revd Robert Sheard
Telephone 01449 678173*

The next coffee morning to be held at the Chapel (Covid permitting) is on Friday 29 October 10am to 12noon.

Services continue to be held at the URC Chapel, Church Road, Stowupland, each Sunday at 10.30am and you are cordially invited to join us in worship. A warm welcome awaits you.

The Speakers for October are as follows:

3 October Harvest Festival with the Rev Robert Sheard
This is a United Service with Holy Trinity Church at the Chapel

10 October Keith Scarff

17 October Jane Paterson

24 October John Webb

31 October Andrew High

Joyce Gardiner

MINISTER'S MESSAGE

Psalm 67: 5-7

5 May the peoples praise you, O God; may all the peoples praise you!

6 The land has produced its harvest; God, our God, has blessed us.

7 God has blessed us; may all people everywhere honour him.

At this time of year our thoughts in Church turn to our Harvest services, but have you ever thought where our Harvest services come from? Even though we can trace Harvest thanksgiving back to Greek, Roman and even early Jewish times, within church history it is relatively modern.

It was in Morwenstow, which is a village on the north coast of Cornwall. When in September 1843 its vicar the Reverend Robert Stephen Hawker, announced, 'God has been very merciful to us this year. He hath filled our garners with increase, and satisfied our poor with bread. . . Let us offer a sacrifice of thanksgiving.'

This was the start of what we now think of as the traditional British harvest festival. Victorian hymns such as 'We plough the fields and scatter', 'Come, ye thankful people, come' and 'All things bright and beautiful' helped popularise his idea of harvest thanksgiving, and the custom of decorating churches with local produce became widespread. Church goers would often spend a great deal of time decorating their churches. Apples are arranged along windowsills; bunches of grapes are hung from unlikely places, while bunches of wheat or barley are made. There are often displays of specially made loaves, trays of eggs and bunches of flowers — even, these days, tinned food.

Each gift represents a 'thank you' for food that has grown during the summer, and which will keep the population fed during the coming winter.

In some seaside churches, fishermen bring some of their catch to be part of the thanksgiving. In others, coal miners used to offer the coal they had dug from deep in the earth. Harvest is, after all, a thanksgiving for all the 'fruits' of the earth. When the festival is over, the food is either given away to those in need or sold and the money given to the poor in this or other countries. Any flowers would have been sent to local hospitals.

Harvest-time is actually one of the world's oldest festivals and was celebrated by the Ancient Greeks, who gave thanks to Demeter the goddess of agriculture, and by the Romans, who called her Ceres. The Jewish people have celebrated Harvest or Sukkot (the Feast of the Tabernacles) for over 3,000 years.

The Reverend Robert Sheard (United Reformed Church Minister of Stowmarket, Debenham, Stowupland, Mendlesham and Haughley.)



COFFEE MORNING

Friday 29th October

Stowupland Chapel

10am – 12noon

Coffee, Tea and Cakes

All welcome

Reduce your Accountancy costs

Call Sarah Place Accountants

Professional efficient Accountants with over 15 years experience

Accounts • Book-keeping • Payroll • Sage
VAT & Tax Returns

01284 747 139

Stowupland Village Hall Excellent facilities - competitive prices



Our Village Hall is just the place for clubs and groups to meet or for special functions, such as parties, receptions and exhibitions.

There is one large room suitable for 140-300 people depending on the event. A small one seats up to 20 people. There is a well equipped kitchen, ample parking and a licensed bar, plus a new audio-visual system included in the standard hire charge.

Interested? Look on our website at www.stowupland.com/village-hall.

Call or email Colin Booker, our booking secretary to arrange a viewing or make a booking.

Tel: 07862740830. email: stowuplandvillagehallbookings@gmail.com

"I'm in PAIN!"

Can Chiropractic help me?



Stowmarket

Chiropractic

caring for you is our business.

Your initial visit will include:

- A consultation with the Chiropractor
- A thorough spinal examination with Orthopaedic & Neurological tests
- A confidential report of findings
- An explanation of our treatment programme if we determine Chiropractic can help you
- Referral to the appropriate specialist if we determine Chiropractic cannot help you

Call TODAY for an appointment

01449 612620

www.abbey-chiropractic.com



Marie Broodryk
M.Tech.Chiro., CCFC, MRCC



Grant Talmage
M.Chiro

Registered with The GCC, RCC, SCA & BCA

7 Stowupland Road, Stowmarket, IP14 5AG

JUBILEE LADIES CHOIR

Our first practice after 18 months was on August 17th and what a joyous occasion it was to see everyone in the flesh, and to sing together. We were socially distanced which was a bit strange, but better than nothing, and we managed!

Four new ladies came, and I hope they liked it enough to join us. They were very welcome! We would still like some more ladies who enjoy singing to come and give us a try on Tuesday evenings, 7.30 at the United Reformed Church in Stowmarket, a much-used venue for the great acoustics.

We started with 'The Rose' as it's familiar for most of us and we needed to find our voices again. 'Hallelujah' then gave us a good workout, before 'I Dreamed a Dream' needed some tweaks!

I'm sure there must be some ladies amongst our new residents who like to sing at home so would enjoy group singing. We all felt a bit nervous at first but soon relaxed. No auditions and no age barriers.

We have members from several surrounding villages, including three of us from Stowupland, so transport needn't be a problem.

For details or questions, speak to Di Balaam on 01449 736374 or me on 01449 774833.

Avril

**Rodent Control - Insect Control
Bird Control - Pest Disinfection**



Lewis Clarke

07568 480928

lrcservices95@gmail.com

Wasp Nests From £50

CHAIRMAN'S COLUMN

The Chief Executive of Mid Suffolk District Council paid his long-awaited visit to Stowupland on Tuesday 31st August and met with me, the Parish Clerk and our two District Councillors. We took him on a tour of all the points of contention within the village. As Church Road was still closed to traffic, he was able to see first-hand the problems with heavy traffic down Rendall Lane and Gipping Road. We discussed issues around planning, construction plans including traffic management and the perceived lack of enforcement for infringements of planning consent. Our tour included all building developments in the village as there had been issues with all of them due to a lack of robust construction plans and the enforcement of those plans. The proposed site on Gipping Road for construction vehicle access to Bloor Phase 3 was discussed in depth. Although the proposal is only for 6 weeks your Parish Council remains opposed to its use for any amount of time. Following our tour of the village we continued our meeting at the URC where a lively debate was had. We discussed the issues that both your District Councillors and Parish Council have been experiencing regarding the crossing at the Co-Op and the lack of communication between all parties and that includes Suffolk County Council Highways.

We discussed the Taylor Wimpey proposals for land behind the allotments, Diapers Farm and Ashes Farm, and the impact they will have on the infrastructure of the village. He left with a very clear idea of our feelings and admitted that planning often only looked at the one plan in front of it, and not at the overall impact of many applications on a community. He said he had some ideas to address the issues and we offered our community as a test bed for any proposals he may come up with. I felt it was a very honest and forthright meeting, but we await any feedback.

In the afternoon of that same day, we met with representatives of Taylor Wimpey to view the latest version of their proposals for the land behind the allotments. This parcel of land is part of Mid Suffolk Draft Joint Local Plan. We have opposed its inclusion in the plan but still need to meet with the developers to try to influence those proposals if the Draft Joint Local Plan is adopted. Your Parish Council had serious concerns that another primary school was proposed within the site making 3 schools within the village and had made representations that it be placed on another development out of the village. Suffolk County Council have now advised Taylor Wimpey that it will not now be required on their site and there is only a requirement for a Pre School.

We raised our concerns about the A1120/B1115 junction and access across the B1115 from the development to existing schools and facilities. Taylor Wimpey favours a 3-way traffic light junction at the A1120/B1115 but Suffolk County Highways favour a roundabout due to be delivered as part of the Ashes Farm development. With these 3 developments in close proximity to each other and timings of build unknown we need to know when any solution to the junction will be delivered.

Subsequent to our meeting with Taylor Wimpey, they invited representatives of village organisations to take part in a zoom meeting to look at and discuss the proposals to date and some interesting suggestions were offered. Taylor Wimpey will be holding a public meeting in the village later in the year. This is all part of the pre planning consultation they are required to conduct.

Just to return to the subject of the closure of Church Road, it was amazing to me the lengths drivers went to trying to get through. It was a nightmare for the residents of Gipping Road and any walkers, cyclists and horse riders trying to access that area as normal. Drivers didn't go slowly despite a very narrow road and there were several near misses. Rendall Lane just came to a standstill at times as no one was prepared to give way. On Church Road cars tried to mount the footpath to get round the closure or even remove the barriers. Despite the signs saying "road closed" they kept coming right up to the barriers and were turning in people's driveways, and in at least one incident driving across The Green rather than turn in the road. Suffolk Highways do not seem to plan or sign road closures very well and whilst there should never have been a closure for so long, or more than one closure in the area operating at the same time, I have to say the behaviour of drivers just amazed me.

On the subject of drivers, just to warn drivers in the village that the Speedwatch Team have a new up to date speed gun so don't let it be you that they catch out.

Please stay safe and keep an eye on older residents near to you especially as the clocks change and with it comes the darker evenings. Just a phone call or a quick visit can make all the difference to someone living alone. The good work that was done during the height of the pandemic needs to continue with our elderly and lonely residents.

This is positively the last call for help with any celebrations for the Queens Platinum Jubilee. Come on Stowupland where has your community spirit gone?

Sally Reeves

PARISH COUNCIL REPORT

SEPTEMBER 2021



The meeting opened with 5 Parish Councillors, 4 members of the public, Keith Welham and Rachel Eburne present.

Councillors' Report:

Both the SCC and the District Council reports can be found elsewhere in Telstar. The District Councillors reported that they have received no feedback from the Chief Executive in respect of the meeting he held with the Chairman of the PC. Today, at a meeting with the enforcement team, Councillors were promised a list of active enforcement cases to be given to them on a quarterly basis. They received an email this afternoon from the head of planning regarding the application from Bloor Homes for construction vehicle routes; there is now no request to open up the gateway they had made onto Gipping Road. This is part of a 70 page document which the Councillors have only been given 24 hours to read and comment on. A zoom workshop has been held with Taylor Wimpey and organisations in the village where around 50% of the attendees were from Taylor Wimpey. Cllr Welham advised that the free trees do come with free guards. Cllr Studd enquired whether steps would be taken to ensure that any Afghan families that are to be offered accommodation in the MSDC area do not include women who are married underage according to British law.

The SCC Councillor advised that there was no budget for additional work on footpaths and bridleways or money for cycleways despite the Tories promising an extra £20 million in pre-election literature. However, SCC has borrowed £65million to fund the new bridge in Lowestoft. Cllr Welham has been placed on two working groups, one of which is the 'bus improvement plan' and he will be pressing for the bus route to service the Gateway 14 link to also come into Stowupland as well as the Chilton Estate. He was asked what the timescale for a bus service was and he advised that SCC will need to bid for money from the Government as well as money from Gateway 14 and section 106 monies.

Matters of Report:

The cycle prohibited signs have been erected and all other matters were dealt with during the course of the meeting or are awaiting action. Unfortunately, no volunteers have come forward to work towards the Queen's Platinum Jubilee Celebrations.

Public Forum:

A resident enquired whether there was any further news from the High School regarding the broken pipe on their land. SCC had promised to get back to the Clerk but has not, so she will chase them. She also appealed to owners to keep their dogs under control whilst on The Green as she has had problems with dogs running loose into her garden and then fouling and being left with the job of clearing up after them. Another resident advised that the stinging nettles have still not been cleared from the footpath beside the butchers and that yesterday, the grass cutting contractor parked his vehicle outside his gate and then proceeded to blow all the grass out of his machines directly into his garden.

Sub-Committee Reports:

Allotments – The committee proposed that a CIL application is made for work to clear the ditch at the allotment and for the cutting of the hedge alongside the B1115.

It was also requested that the Clerk writes to the tenant of a plot requiring attention. The clearance of plots 1&2 are awaiting the contractor. The terms and conditions for allotment holders will require looking at again as it is costing a lot of money to clear up allotments that are being left unattended and with a lot of debris on when they have been given up. The PC have been advised by Taylor Wimpey that they may be able to supply greywater and some parking to allotment holders should their planning application be approved.

Bio-Diversity and Wildlife Working Group - It was proposed that the PC approve the 3 areas of The Green to be designated as wildlife meadow areas and that the group can then plant native bulbs and flowers and then manage the area. It was proposed that they also apply to SCC to take over the management of the area around the village sign but this was denied for the time being as this corner is likely to be subject to roadworks particularly if planning permission is given for Ashes Farm. They requested a bid for £700 should be made for funds from the MSDC locality budget for the group to manage these projects.

Cemetery and Churchyard – The committee proposed that the PC agree a budget to purchase some native daffodil bulbs to plant along the fence line of the cemetery and that changes to the maintenance agreement should be accepted.

Emergency Planning Group – Cllrs Voden and Reeves are going to check that sufficient supplies are available and accessible at the Village Hall in the event of an emergency situation.

Environment – Cllr Beeson has taken over the Chair of this sub-committee. It was agreed that the PC should make a £800 contribution towards the cost of removal of the sandbags alongside The Green prior to any posts being installed. It was agreed to continue to wait for a third quote for the continuation of the posts to protect The Green and that topsoil from the post excavation could then be used to fill in the hole where a willow tree was removed outside Willowcroft. It was proposed that the Clerk should write to AWA to report the broken and misplaced hydrant markers and to contact UK Power Networks about the ivy growing on the transformer outside Corner Farm. It was also proposed that she contacts the owner of The Retreat about the repair to the access. Quotes are to be sought for cutting back the trees along the side of The Green between Willow Wood and Corner Farm. It was agreed that a volunteer morning be scheduled every 3 months in 2022 to carry out works on The Green. The overgrowth opposite the kissing gate will be checked whether it is from the hedge of a house owner and, if so, they will be contacted regarding its removal.

Finance and Policy – The committee will make their recommendations to the PC following their September meeting.

Footpaths – The cut of all the footpaths on the rights of way cutting programme have been completed. A letter sent to SCC in respect of the complaint about their responsibilities for the footpaths has to date received no response. The Clerk has sent a letter to the Headteacher of the High School requesting his help in policing the enforcement of no cycling on footpath 32, as yet another complaint has been received about students cycling along this footpath.

Planning – Objections were proposed to the application for changes to a property in Stowmarket Road, no comment on a listed building consent in Church Road and supported applications in Devon Road and Saxham Street. MSDC have agreed applications for change of use in Church Road and an extension in Stowmarket Road.

Play Park – The work on the hedge has been completed

Transport, Travel and Safety – A new speed gun has been purchased.

Councillors Reports:

Cllr Voden thanked the Chairman for her efforts in purchasing the new speed gun and case. He advised that they had caught 5 people speeding on B1115 near Devon Road and this still remained a priority area for speeding motorists. He also gave a plug for the Walker Cup on Sunday and to thank those Cllrs who had volunteered their time to marshal the event.

Chairman's Report:

Cllr Reeves proposed that the plans put forward by Taylor Wimpey should be discussed fully at the October meeting when they can resolve how they are going to progress with the developers. It was accepted that the PC should meet with Taylor Wimpey on a separate meeting to the full PC meeting. This will give Cllrs time to look at the plans before commenting at the next PC meeting. Taylor Wimpey have advised that they are planning a leaflet drop in the village and will be holding a public meeting. She advised that the meeting with the MSDC Chief Executive went well, and he was able to observe the amount of traffic that uses Gipping Road and the risks involved to horse riders and pedestrians particularly when heavy lorries are involved. It was felt that it was an honest and open meeting and will see if anything changes as a result of the meeting. She also proposed that as from November, the PC meeting should be moved to the first Thursday in the month and then the meetings could be moved to the URC hall and in the meantime to remain at the Bowls Club.

Clerks Report:

The Clerk reported that the emergency plan has been updated with Cllr Voden. Landex felt that grass clippings had been tipped in the cemetery ditch which is not the case so this discussion is still ongoing. She attended a SALC networking meeting. She and Cllr Studd are to interview prospective litter pickers.

Correspondence:

Although the fish shop owner has provided a litter bin, customers are still not using it and putting their waste into the bin by the bus stop which has caused further complaints about the rubbish overflowing from this bin. The PC have been advised by MSDC of a new 'Welcome Back Funding' stream and it was felt that they could apply to that to provide new large wheelie bins and an outer cover which they can be locked inside; this should take all this extra rubbish and would be emptied by MSDC on their normal waste route. They will cost £1130 plus the cost of concrete bases for the bins. If this bid fails, they will try a CIL bid. A resident complained about some overgrown footpaths, but one was not on the cutting schedule and the other was outside of the Stowupland parish. Stowupland Falcons have requested to use The Green to play football on Saturdays and some Sundays. This was agreed with the proviso that Sunday matches are finished by 12.30pm, all rubbish is removed and that there is no parking on The Green or obstruction of any footpath. There was also a request for community football to use The Green on a Friday evening. There was also a circular from Community Action Suffolk regarding the Suffolk Community Restart, and 3 from MSDC: a Gambling Act consultation, taxi policy consultation and the Welcome Back Funding information. SALC advised of an invitation to a zoom meeting about the Festival of Suffolk.

The meeting closed to the public at 8.50pm.

DISTRICT COUNCILLORS' REPORT

OCTOBER 2021

Afghan refugees

Following the Government announcement of its new resettlement scheme for Afghan refugees, councils in Suffolk, including MSDC, have expressed their commitment to assist. We have already helped a small number of Afghan interpreters and their families to resettle in Suffolk. There will be ongoing work to support unaccompanied asylum-seeking children and other refugees entering the UK.

Planning – general concerns

The Chief Executive of MSDC had to postpone his visit to Stowupland as a family member had been in contact with someone who had tested positive for Covid. The delayed meeting took place on 31 August. We accompanied the chairman and clerk and the Chief Executive to visit various parts of the village and discuss a range of concerns.

Devolution

Together with other councils in Suffolk, MSDC have written to the Secretary of State responsible for local government to indicate a desire to discuss a possible devolution deal for Suffolk. It is important that any deal should avoid an extra tier of government and extra costs to our council tax benefits.

Gateway14

The development proposals have been granted planning permission with a number of conditions. One of these is a financial commitment towards community and recreational facilities.

Development of Needham Market former HQ site

This development of homes for private sale is progressing well and show homes can now be viewed by potential buyers. This is the first phase of housing development being carried out by a Public/Private Joint Venture. Further development will include a small supermarket and affordable homes for shared ownership and for social rent.

Covid and MSDC Council meetings

There are no signs that the Government will renew the legislation to enable virtual or hybrid meetings. Committee meetings are being held in the Council Chamber and it is anticipated that the full Council meeting on 23 September will be held in the Chamber.

Staff are continuing to work from home but, when necessary, access to workspace in Endeavour House can be booked by staff and councillors.

Taxi licensing – no encouragement given to switch to electric vehicles

The Conservative administration missed the opportunity to improve Mid Suffolk's environmental credentials when they put forward a new taxi licensing policy at the Council's recent Licensing Committee. Despite the fact that no new diesel or petrol car can be purchased after 2030, the ten-year policy included no provisions to encourage cab drivers to move to electric vehicles and contained none of the incentives other councils use. The policy, without mention of any efforts to reduce emissions, was approved on the Chair's casting vote.

Cycling and Walking

Babergh and MSDC have set up a Joint Task and Finish Group to prepare a Local Cycling and Walking Improvement Plan (LCWIP) to prioritise locations across the Districts for new or improved cycle and pedestrian provision. Keith is a member of the group.

Solar Carport in Stowmarket

MSDC has let a contract for the construction of a solar carport in the Stowmarket Leisure Centre car park; works are expected to begin shortly and be complete by spring 2022. More than half of the cost is being met from the Government's Getting Building Fund.

Locality Awards

There is still funding from the annual locality awards. Amounts of £250 or more are available to local community groups and organisations. Please encourage groups in the village to contact us for an application form or telephone for further information and help in applying.

Councillor Keith Welham
keith.welham@midsuffolk.gov.uk
Telephone: 01449 673185

Councillor Rachel Eburne
rachel.eburne@midsuffolk.gov.uk
Telephone: 01449 673311

COUNTY COUNCILLORS' REPORT

OCTOBER 2021

Full Council Meeting

A full Council meeting in the Council Chamber was held on 8 September, the first to be held there for 18 months.

Suffolk Biodiversity policy development panel

SCC set up this panel to develop a policy for reversing biodiversity losses by 2030. The county-funded Suffolk Biodiversity Information Service has suffered from cuts, and it is vital that its work is re-invigorated rather than abandoned. The panel will be looking at the verge cutting regime, use of pesticides, use of county owned farmland, rewilding, planning and many other issues.

Safer Route to School, Works at Bus Shelter, Removal of Sandbags

I am still waiting for an explanation of why SCC consider that the scheme as proposed at the time of the land swap should not proceed. The gravel overlay of the length across The Green was promised to be completed before the start of the new school term. I am now chasing for a start date for all the works to be completed.

Research Assistant

The research assistant appointed to support the opposition group of Greens, Lib Dems and Independents decided at the last minute not to take up the post.

A new appointment has now been made and the assistant should be in place by early October.

Public Rights of Way

I asked the Cabinet Member at the Council meeting on 8 September to make funds available in next year's budget for better maintenance of footpaths and bridleways. He declined to agree that there should be a funding increase, preferring that each problem should be dealt with individually rather than make an overall improvement to the condition of footpaths.

Provision for Cyclists and Walkers

A county-wide Local Cycling and Walking Improvement Plan (LCWIP) is to be prepared incorporating the LCWIPs from each of the District Councils and will provide background information to support bids for Government funding.

The Administration have promised a total of £20million for new and improved cycle routes. The opposition group are pressing for these funds to be allocated for works to commence in 2022 but at the County Council meeting they refused to budget for any of these improvement works.

Infrastructure Delivery Plan

Rachel Eburne and I have been trying to arrange a meeting with a representative of the health authority to discuss health provision in the Stowmarket area and to suggest a new health centre, preferably on the Diaper's Farm development. This meeting is now set to take place in early October.

Zero Carbon battle bus visiting Suffolk

The purpose of the Zero Carbon Tour is to discuss the concept of net zero carbon and why it is critical for businesses. Suffolk's businesses, organisations and community groups will share their stories about how they have started their journeys to net zero. This will inspire and give confidence to those considering how to reduce their carbon emissions.

This event and others are taking place across Suffolk in the lead up to COP26, as part of Suffolk's collective campaign of Creating the Greenest County and be net zero by 2030. As part of the Suffolk Climate Emergency Plan, these events look to encourage collaborative action by educating and engaging with residents and businesses to develop a net zero journey.

Other events which are being planned in Suffolk in the lead up to COP26 include:

- 12 October – Ten Steps to Net Zero (Suffolk Chamber of Commerce)
- 21-22 October – Local Energy Showcase (Babergh and Mid Suffolk District Council)
- TBC October - A Greener NHS day
- 12 November – Greenest County Awards (Suffolk County Council)
- 23-25 November – Low Carbon Homes

All events are subject to change; visit www.greensuffolk.org for the latest details and information about starting your journey to net zero.

A1120 Road Closures

I have asked the Cabinet Member for Operational Highways to investigate why SCC agreed to the closure of a signed Tourist Route over the August Bank Holiday and why a closure for 10 days was permitted. The works could and should have been arranged to be completed in five days to allow the road to be reopened by late Friday. For long periods there was no work which required the complete closure. I have also asked why the signs indicating that Rendall's Lane was closed were not removed on completion of the Anglian Water works and before erecting the Church Road closure signs.

New access to new dwelling adjacent to Elm House

I have asked for an investigation into how a new access from Church Road to Hanbury House was permitted without planning permission. Also, a check on whether or not the works were approved in advance by SCC and undertaken by a SCC-approved contractor.

Gipping Road – request for speed limit

I have challenged the refusal of the request for a speed limit, and I am still awaiting a response.

Keith Welham Keith.Welham@suffolk.gov.uk 01449 673185 or 07831 705 714
County Councillor of Stowmarket North and Stowupland



F. G. BROWN – OPTICIANS
Denmark House, 41 Bury Street,
Stowmarket.

Tel:- 01449 612812/674030

As independent opticians we offer a more personalised eyecare service that you can trust for all the family including:-

Optomap retinal examination

Colorimetry

A wide range of competitively priced frames and spectacle lenses

Contact lenses

Prescription and non-prescription sunglasses

Your sight care is our priority



ANNIVERSARY • 1980-2020

Gipping Press are open and proud to print this publication

Tel: 01449 721599

Email: enquiries@gippingpress.co.uk

www.gippingpress.co.uk

DESIGN | PRINT | PROMOTION | DISPLAYS | SIGNAGE | MAILING

THE TELSTAR TEAM

Editor - Kay Easter – kay.telstar@gmail.com - 01449 677261 – 16 Oak Road
Kay welcomes contributors to the magazine, either one-off articles or regular columns.

Business Advertising - Sally Wray - adverts.telstar@hotmail.co.uk - 01449 676612
Businesses with a Stowupland connection can advertise at very reasonable rates.

Diary Dates – Neil Langridge – neil@stowman.plus.com - 01449 616275
To let the village know the date and venue of your event contact Neil to be included in the diary dates.

Distribution Co-Ordinators – Keith and Cathy Welham – 01449 673185
Colin Vickridge and Keith Welham are our proofreaders and Jerry Voden chairs meetings of our team. The entire team are unpaid volunteers.

Telstar is distributed by a team of volunteers who deliver the magazine to over 1,100 homes in Stowupland. The magazine is produced every month, with the exception of December and January, which is a combined copy that gives our trusty team of volunteers a well-earned Christmas break!

Telstar is funded by grants from Stowupland Parish Council and Mid Suffolk District Council as well as income from business advertisers.

Telstar – for the community, by the community.

From the Telstar Committee

Please note that the opinions expressed in letters and articles are not necessarily those of the Telstar Committee. We cannot be held responsible for the accuracy of material submitted for publication. We reserve the right to include, edit or amend as we think appropriate. Telstar is produced in good faith but errors or omissions may occur during the process of production. If this is the case, please let us know so that errors may be corrected.

Advertising Disclaimer

All adverts are placed in good faith and the publishers cannot be held responsible for any work carried out. Advertisers details are not passed to any other publishers.

Deadline Date: 7th October 2021 for November 2021 Edition

Printed by Gipping Press Ltd. Tel: 01449 721599. Web: www.gippingpress.co.uk

STOP PRESS!

COMMUNITY EVENT

BULB PLANTING MORNINGS

The Wildflower & Biodiversity Group
will be bulb planting on Tuesday 26th October
and Saturday 30th October from 10am.

Please watch the Village Noticeboards, Stowupland.com,
Facebook Pages; All things Stowupland
and Stowupland Parish Council
for more details.

All welcome – tools will be provided.