

Telstar

Stowupland
News

No 359
November 2022



STOWUPLAND
LEST WE FORGET

STOWUPLAND
LEST WE FORGET

**M & M Butchers
Mark Hammond**

Suppliers of high quality meats, poultry,
game and award winning sausages.

**Local Meats * Home Cooked Pies
Home Cooked Hams
Dry Cured Bacon & Gammon
Selection of Homemade Burgers
Big Selection of Specialist Cheese**

Local Delivery

Opening Hours

**Monday & Tuesday 6.30am to 1.00pm
Wednesday Thursday Friday 6.30am to 2.00pm
Saturday 6.30am to 12.30 pm**

The Green Stowupland Suffolk

IP14 4AR

Telephone :

01449 677720



NOTES FROM THE EDITOR

NOVEMBER 2022

Hi everyone and welcome to the November issue of Telstar. I write this having just returned from a break in Cyprus, where there were daily temperatures of 28C plus, so having to reacclimatise to cooler temperatures. It'll soon be time to get the winter woollies out. Holidays are lovely, but its always good to get home, and despite my short time living in the village, I definitely felt I was coming home.

I can't possibly write without mentioning the ignominy of the village losing the Walkers Cup to our neighbours over in Old Newton. Stowupland had been holders of the cup since 2020. There is a report on the event in this month's edition. Pat, my husband and I took part, taking our dog Fen with us. She had a whale of a time, but was disappointed to find she couldn't be included in the final numbers. Although even if she could, it wouldn't have tipped the balance in Stowupland's favour. I think for next year, I might have to go knocking on every door in the village to ensure village pride is reinstated. However, congratulations to Old Newton, who definitely rallied for the occasion, and let's not forget that the purpose is to raise money for a worthy charity, so thank you so much to all those that took part.

Included in this month's magazine is the first article from the pupils at Stowupland High School. I am delighted to say that they will be making a regular contribution. The young people at the school have a newspaper club and their members are really excited to be able to see their articles in print. My thanks to Alice Leadon, the teacher who runs the club for making this happen. This month's article is a feature about their recent open day. The science part took me back to my school days, although not the pig part – it'll make sense when you read it!

We on the Telstar team, having been looking at different ways of making the magazine more accessible for persons who may be visually impaired, so are trialling the production of a podcast. We will start small with a few of the articles, which will be available on the Stowupland Telstar webpage <https://www.stowupland.com/telstar>. Bear with us this is very much in the experimental stages.

Finally, this month will see the first of the Telstar fundraising Quiz Nights, so please support and enter a team. Details are on the back cover. It will also see the second of the Bingo nights, and it will be good to see as many of you there as possible.

STOWUPLAND WILDFLOWER AND BIODIVERSITY GROUP

UPDATE

Some of our members have been busy clearing dead wood from the pond by The Retreat and making a log pile on the edge of The Green. We have also started to clear the surroundings to allow more light into the pond. Further work will be carried out by contractors, including removing some of the reeds and digging the pond out back to the original clay base. Also, erection of fencing around the pond for public safety, signage and a lifebelt.

The log piles will provide homes and shelter for wildlife, but they need to be managed to avoid unnecessary disturbance from well-meaning or mischievous interference. An information sign will be erected and will hopefully deter disturbance of the logs.

We asked the Parish Council to consider proposals for a No Mow May for some areas of The Green, but the councillors voted against allowing the buttercups and other wildflowers to remain throughout May. Allowing the clover to bloom would have provided pollen for bees, and the buttercups would have provided colour throughout the whole month. We should not be too discouraged; we know that the county and district councils favour encouraging biodiversity and will welcome proposals for land in their ownerships. Perhaps we should look for opportunities for wildflower verges in Columbyne Close, Trinity Walk and alongside B1115.....and verges on our estate roads.

We have a scarifier which can be borrowed – we'd like a small donation to help fund our future projects – to help prepare your lawn prior to sowing wildflower seeds. We'd love to see more gardens with wildflower lawns or bee friendly areas.

We have some yellow rattle seeds; these have been distributed amongst members of the group to see if we can establish our own bank of yellow rattle plants.

During half-term we will be planting daffodil bulbs along The Retreat frontage and along the ditch by Birch Close. Hopefully residents will have seen our posters and joined in.

Our owl boxes are ready to be put in place on The Green, one fixed to a large tree and the other on a redundant telegraph pole or on a strong, tall post which we will need to erect. Other possible locations could be on the edge of the Linden Homes development or on land near Mount Pleasant.

We will be establishing a wildflower meadow on part of The Green – between the pond by The Retreat and the bench, part way along towards the URC. The area will be mown just once next spring and then allowed to grow; we will monitor and record which species flower naturally.

And then plant more of the same and, perhaps, other varieties of wildflowers, and suppress the growth of the grass. Our expectation is that within a few years a wildflower meadow will become established, and residents will realise the benefits of not mowing so much of The Green fourteen times a year.

Our next meeting will be at URC at 7.30 on Monday 14th November. Everyone is welcome – for just the odd meeting now and then or to join our group to plan projects for next year.

What Can I Do?

What does biodiversity mean to you?

Come and join us at the Village Hall on
Saturday 18th February 10am-1pm

SAVE THE DATE!

More details in next month's Telstar

"I'm in PAIN!"
Can Chiropractic help me?



Your initial visit will include:

- A consultation with the Chiropractor
- A thorough spinal examination with Orthopaedic & Neurological tests
- A confidential report of findings
- An explanation of our treatment programme if we determine Chiropractic can help you
- Referral to the appropriate specialist if we determine Chiropractic cannot help you

Call TODAY for an appointment

01449 612620

www.abbey-chiropractic.com



Marie Broodryk
M.Tech.Chiro., CCFC, MRCC



Michael Bailey
M.Chiro

Registered with The GCC, RCC, SCA & BCA

7 Stowupland Road, Stowmarket, IP14 5AG



Hands up if you love great beer, delicious food and working with brilliant people! Then you'll fit right in with us at Muntons.

For over 100 years, we've been producing high quality malt and malted ingredients for the world's favourite food and drinks brands.

Come and join the teams that make this happen at our headquarters in Stowmarket by scanning the QR code or visit www.muntons.com



Beautiful Range of Suffolk Prints & 2023 Calendars



Please order online at www.anythingsuffolk.co.uk

The cost of things just keeps going up. The food shop doesn't stretch as far and my bills just keep getting higher. I've made cutbacks and, at the moment, I'm just about managing but I'm really worried about how I'll cope as it starts getting colder. What should I do?



You're not alone in struggling with rising costs, but it's important to know there is support available.

If you're finding it hard to stay on top of bills, make sure you know what money you've got coming in and out each month. Citizens Advice has an online budgeting tool that can help with this - visit citizensadvice.org.uk/debt-and-money to find this tool and more.

It's also worth finding out if you're eligible for any benefits or support with your energy and living costs. On the Citizens Advice website citizensadvice.org.uk there's a benefits calculator, advice on how to reduce living costs and information on other ways to increase your income.

The good news is there is help with rising energy bills. From 1 October 2022, there's a limit on gas and electricity prices for most households - this is called the Energy Price Guarantee and will be in place for two years.

From October you'll also get £400 off your electricity bill. This is called the Energy Bills Support Scheme. You don't need to do anything to get the money and you won't have to pay it back. The money will be paid in six instalments, you'll get £66 in October and November followed by £67 in December, January, February and March.

You should automatically receive the energy discount if you pay by direct debit, standard credit or payment card.

If you have a prepayment meter that isn't a smart meter, you'll get the discount via vouchers or as an automatic credit when you top up at your usual top-up point. Your supplier will let you know how they will issue it.

If you have a smart prepayment meter, the credit should be automatically added to your meter.

If you can't pay your bills, speak to your energy supplier as they have a responsibility to help you come up with a solution.

Citizens Advice Mid Suffolk can provide advice on this and other issues, including debt, employment, benefits and family law. You can contact them on 01449 676060 or use the contact form at midsuffolkcab.org.uk/contact-us. More information and our opening hours can also be found at midsuffolkcab.org.uk/contact-us.

PARISH COUNCIL REPORT

OCTOBER 2022



The meeting opened with 2 members of the public, 7 Parish Councillors and Councillors Eburne and Welham present.

Councillors' Reports: The full SCC and the District Council reports can be found elsewhere in Telstar. Cllr Eburne added that MSDC Cabinet have agreed to consult on a council tax reduction scheme for households on low incomes. She advised that there is still no date for the proposed Church Road planning application to be heard but Gateway 14 is scheduled for next week's planning meeting. Cllr Welham attended the Ashes Farm and Diapers Farm planning meeting where a number of concerns were raised about the volume of traffic, pedestrians and cyclists converging on Stowupland Road at certain times of the day; this has resulted in a decision on the application being deferred. The PC Chairman asked them about the proposed footpath between Bloor Homes phase 2 and the bus shelter in Trinity Walk but this appears to be awaiting a decision on the removal of 2 trees from MSDC land. The Clerk queried some comments that she had heard when attending a 'What's Next For Stowmarket' meeting that empty listed buildings are not liable for Council Tax. Cllr Eburne was not aware of this, and she is going to check it out.

SCC Cllr Welham was asked about the scheduled 2-day closure of Oxlip Road between 9am and 5pm for resurfacing as to what is going to happen to deliveries, general vehicle access and how construction traffic was going to access Bloor Homes phase 3 site. He will make enquiries about this. He did advise that after a meeting with the Community Liaison Engineer that there is definitely not enough room to install a barrier anywhere along footpath 32. The Chairman asked if he could make it clear to SCC that schools should provide adequate parking on their sites to cover any events to ensure that other villages do not suffer the pain of vehicle parking that Stowupland does. She also asked that Mr Chenery keeps the PC informed as to what is happening about the feasibility of extending the 30mph speed limit along Gipping Road as he is not communicating with the Parish Council.

Matters of Report: Work completed includes clearing of ditch at Birch Close, cleaning of graffiti on the bus shelter, the LED upgrade save for 1 light and the areas of the Green which have been top soiled and re-seeded by AWA. The litter bins have been delivered and awaiting fitting as are the soldier silhouettes. Work has started on the new footpath along the Green and all other items are awaiting quotations or action.

Public Forum: There was only one question which had been emailed to the Clerk in advance. This was a request about the handover of Thradstones Meadow to the Parish. The Clerk responded that, despite chasing Bloor Homes, the Parish Council has received no information so are unable to answer the query.

Telstar: Following receipt of the report from the Telstar Committee, it was requested that the PC allow the community events group use of the bingo machine, bingo and raffle tickets which they will replace, portable speaker system and use of the community events cupboard and any supplies and draw prizes. This was agreed however, there are no draw prizes left as they were out of date because of the length of the pandemic.

Sub-Committee/Working Group Reports:

Allotments – Following the report from the allotment officers, it was requested to consider the following: provision of water on site, erection of greenhouses, contacting village building owners for collection of rainwater from their buildings for use by allotment holders and the use of a plot for communal use. These were all as a result of the recent meeting of allotment holders. It was also requested that 4 tenants are contacted regarding the termination of their tenancies, and to seek a quote for a skip to be provided for the volunteer day next spring. The difficulty with investment into the allotments is that the PC do not own the land so any material change would have to be the decision of the Stowmarket Church Charity. Cllr Voden has announced his intention to stand down from the allotments sub-committee and he was thanked for all his hard work over the years.

Biodiversity and Wildlife - Following receipt of their report it was agreed that the PC purchase a first aid kit for the volunteer days and they will also purchase a second one as the equipment in their present one is out of date. The Chairman also asked if the log pile constructed from wood recovered from the clearing of the pond should not be extended any further. This was agreed and a sign will be placed in the log pile explaining its significance. Mr Welham also advised that the section of The Green which will be allowed to naturalise will require one cut in March so that it starts off clear. He also advised that the autumn bulb planting dates would be 27th and 29th October.

Cemetery and Churchyard – The Chairman proposed that quotes be sought to remove the trip hazard on the path in the churchyard, for painting the gates and side returns at the old cemetery and quotes for a reduction in height of the lime trees in the cemetery. All these recommendations were agreed.

Environment – It was proposed that certain amendments were made to the grass cutting schedule for 2023 including allowing certain areas of the green to be left uncut in May to promote biodiversity. These proposals were not carried but they did agree to contact Orwell Housing to see if the PC can assist them to keep the edges of the footpath cut beside the path that runs from the butchers to the high school playing field.

Finance and Policy – Cllr Johnson proposed the recommendations that the PC accept the amendment to the audit budget figure, that the scarifier disclaimer be agreed, and that amended terms of reference be adopted. These were accepted. They also noted the review of the following risk assessments: the cemetery caretaker and general maintenance worker, the community litter picker, volunteers' and clerk's risk assessments and also the Parish and Financial risk assessments.

The October payments were approved, and it was requested that an additional dog bin be purchased for Saxham Street at a cost of £340, that the quotes of £260 for clearing the allotments, £250 for clearing the ditch by Corner Farm and £550 for the removal and stump grinding of one of the jubilee sweet chestnut trees on the Green, and a small tree in front of Laburnum Cottages. It was also requested to accept the cost of £6951.38 to construct a new footpath from FP 32 to the fish shop. Quotes of £350 to add reflectors to the first phase of the post project and £790 to replace the barriers with more substantial ones at Columbyne Close were proposed. All these were accepted.

Planning – Planning permission has been requested for an extension and various other works at a property in Church Road, an extension to a property in Birch Close, an extension and various other works to a property in Saxham Street, a new build in Columbyne Close, an extension to another property in Church Road and the installation of a wind turbine in Mill Street. These were all supported. Another proposal was for a number of new agricultural buildings in Gipping Road which do not allow any objections from the PC but it was decided not to support this application as this would prevent the rebuilding of the cafe.

MSDC have granted planning permission to applications previously submitted in Highfield Road and Gipping Road.

Transport, Travel and Safety – As a result of a report from the Speed Watch Officer, Cllr Voden proposed that the PC progress the preparation of the Speed Indicator Device Project with sites: on the A1120 opposite the cemetery, on Thorney Green Road opposite Willow Wood and on the B1115 on the verge in front of the allotments. These were agreed. The Chairman advised that 2 people have contacted her regarding interest in becoming members of speed watch.

Councillors' Reports:

Cllr Bridges reported that some of the wood edgings alongside the path across The Green between the Retreat and Chapel Lane are higher than the path.

Cllr Beeson suggested setting up a working group to prepare for the village celebrations for the coronation next year. 3 other Councillors agreed to join her, and they will be making a start this month.

Cllr Voden thanked those who took part in the Walker Cup which unfortunately Stowupland lost this year with 51 people from the village taking part compared with 99 from Old Newton. However, Stowupland raised £178 but we are currently not aware how much was raised by Old Newton. Cllr Studd reported that the free dog poo bags in the dispenser by Linden Homes site have been pulled out and were blowing down the road. He suggested that, once current supplies of bags run out, the Council consider not replacing them. He also reported that someone has removed the top rails from the fence in front of the pond opposite the footpath leading from the Bloor Homes development onto Gipping Road.

Cllr Reeves reported that the surface of the path leading from Trinity Walk to the Primary School is breaking up and very uneven and also very narrow in places. This will be reported to SCC. Also, despite just spending £150 on cleaning the graffiti off the equipment in the play park, it is back again. Someone had also apparently deliberately knocked a nail through one piece of equipment causing injury to a child. This will be an agenda item at a future meeting when a decision will be taken as to what to do about the play park as the PC cannot keep spending money to clean up only for it to be vandalised again. She also asked that all committees and working groups let the Clerk know of all their assets. She also reminded them that there is money available for trees for the Queen's Canopy so could all Councillors come up with suitable sites.

Chairman's Report: The Chairman advised that the new gas pipe will run along the side of the new path on The Green rather than down Thorney Green Road. However, there will be ongoing rolling road closures in places.

Correspondence: Among the correspondence received this month was one from Cadent regarding the location of the gas main replacement works in Stowupland and four from MSDC stating that they are not going to take any enforcement action in respect of Green View, CIL funding, tree canopy survey to develop a tree planting strategy and the joint local plan update.

The meeting closed at 9.22pm.



07787 551185
shedbasessuffolk@gmail.com

Existing shed demolition and site clearance
Garden Office ground preparation
Concrete shed bases
Patios
Driveways
Man & Micro Digger Hire
Fully Insured family business



**FRESH MEAT
DELIVERED TO
YOUR DOOR**



Free delivery on orders
over £10 to IP30 &
IP14

**WEDNESDAY
AFTERNOON**

FOR MORE INFORMATION

Call us
01284 706583

Email
enquiries@hubbardsfinefood.co.uk

www.hubbardsfinefood.co.uk

**EXAMPLE MEAT BOX
FOR ONE - JUST £10**

1 chicken breast
220g beef mince
4 traditional sausages
1 pork loin steak
2 slices unsmoked ham
4 rashers unsmoked bacon

HUBBARD'S
BUTCHERS & FINE FOOD

**You could advertise your
business here for only:**

£10 per month
(Quarter Page)

£20 per month
(Half Page)

£40 per month
(Whole Page)

Please contact:
Sally Wray by email
adverts.telstar@hotmail.co.uk

CHAIRMAN'S COLUMN

Good news first. The new footpath along The Green from opposite the Butcher up to Thorney Green Rd and the piece from Footpath 32 to the Fish and Chip Shop should be completed, or nearly completed, by the time you read this. Your Parish Council has been very concerned that residents walk in the road especially when The Green is wet. With the increase in traffic in the village this new footpath will provide a safe and solid surface for pedestrians off the road and is being paid for from your Parish Community Infrastructure Levy.

You will, by now, have seen the arrival on The Green of Cadent Gas. Their arrival surprised us all as the Parish Council had no notification of any works within the village. It seems that Cadent applied to Suffolk Highways for permission to park on The Green but were told it was not Highways land and Suffolk Highways did not know who owned it.

Cadent is replacing the original gas mains in the village with bigger pipes to cope with the extra demand due to the new build within the village. They are currently planned to work on the Heights (Birch Close, Maple Rd etc) area. They write to residents prior to work being carried out but had failed to notify the Parish Council. They are gradually working their way through the village over several months. There are plans for a new pipe to be laid across The Green from the start of Half a Mow area to opposite the butchers, parallel to the road. In discussion with the contractor your Parish Council have agreed to siting the new pipeline a bit further on to The Green as the work is due to be carried out after the start of the construction of the new footpath. The original plan for the pipeline was on the route of the new footpath.

Moving the new pipeline onto The Green will save huge disruption in the road for residents. If they put the pipe in the road there would need to be a rolling road closure along Thorney Green Rd for weeks. There will however still need to be a rolling road closure along Columbyne Close as it will require excavation of the road. The area along the A1120 is planned to coincide with school holidays to help minimise disruption to traffic.

The contractor's site office etc will remain in situ but when all work has finished and the welfare unit and site office are removed Cadent will level the land, spread topsoil and seed. As work is anticipated to last well into the bad weather The Green in that area will suffer a lot of damage but tell us they will leave it in a good state for recovery.

The Playpark has again been vandalised with graffiti everywhere. Your Parish Council paid to have the last lot of graffiti cleaned professionally and it was back within a week. I don't know if it is boredom or just the desire to deface something. I am afraid the rationale behind it escapes me. Your Parish Council has spent a lot of money improving the equipment available and this is the way it is treated by a few. Some of the words sprayed really are not words you want young children to learn. The bus shelter at Birch Close has also been daubed with graffiti. Please if you see any kind of mistreatment of village property challenge the offenders and report it to the Parish Clerk as soon as possible. Your Parish Council can not keep paying to have it removed.

Sally Reeves

COUNTY COUNCILLOR'S REPORT

NOVEMBER 2022

Full Council - Council did not meet in August or September. The next meeting of Full Council will be on 20 October.

Cabinet - The meeting planned for 13 September was cancelled. The next meeting will be held on 11 October with a very long agenda. A key item is the SEND capital programme which includes expenditure of £7million (funded from Central Government) to develop specialist units attached to mainstream schools and £3million to create 3 new special units to support those with speech, language, and communication needs.

Suffolk in talks to become investment zone - Suffolk County Council has agreed to start discussions with Government to agree an investment zone as part of the Prime Minister's new growth and investment strategy.

Our political group are opposed to the idea since the Government aims to remove environmental controls and planning controls within these zones. Since the council began talks, the RSPB, National Trust and the Suffolk Wildlife Trust have all described the plans, announced in Kwasi Kwarteng's mini budget, as "an attack on nature".

It is not yet clear which parts of Suffolk the council wants to be in the zone. The current Freeport East Zone, (investment zones are designed to replace Freeport zones) extends from the coast and the investment zone could envelope much of Mid Suffolk.

Community Liaison Engineer - I met with our new Highways Community Liaison Engineer and gave him a tour of Stowupland. I also asked him to arrange a repair for the large area on Mortimer Way where the top surface has stripped off.

We inspected the following areas of concern:

- Branches overhanging cycle track on B1115
- Devon Road verge
- Ponding on Thorney Green Road
- Faded 30mph repeater signs
- Gipping Road overgrown hedge
- Condition of footpaths on Trinity Meadows
- Gipping Road – access to Bloor Homes Phase 3 site which, at the time, was open
- Passing places on Rendalls Lane
- A1120 near The Pippins where the road has sunk again
- FP32 – he considers that the width available is insufficient for a barrier to be installed
- Crossing at the Co-Op; he agreed that the time allowed for crossing is too short

Speed Indicator Devices - A proforma will be completed for each SID site and returned to SCC. Details of post and foundation size have been received and estimates of cost to provide them will be sought from SCC.

Warm Homes Suffolk Fund - Councils in Suffolk have joined together to establish Warm Homes Suffolk. The service will offer expert advice on reducing energy bills and usage, as well as benefits that residents may be entitled to during this crisis. The fund is open to homeowners, renters, and landlords and will target homes that need insulating and more efficient heating.

For more information, visit: www.warmhomessuffolk.org, or call 03456 037 686.

Cancelled Taxi Contracts - One of the big stories in the local news has been the increase in taxi companies cancelling SCC contracts to provide school transportation. Young people and children, including those with SEND needs, have once again had their education and development disrupted. Reports from EADT and BBC News state that the rise in fuel prices and cost of living has forced many companies to cancel contracts. EADT suggests that district council policy, stating taxi vehicles can be no older than eight years, has forced taxi companies to pull out.

Our Group is supportive of promoting cleaner transport and would like to see taxi companies properly supported to transition to Net Zero.

SCC upgrades car fleet to electric vehicles - The first delivery of 16 electric vehicles will be in November, as the council begins its programme to upgrade all existing pool cars. This is part of the council's work to deliver on its climate emergency declaration, and ambition to protect and enhance the environment. The aim is to completely electrify the fleet by 2024.

Fire Service - I was a member of the Fire Service Policy Development Panel which reported to Cabinet earlier this year. Further work is being undertaken to investigate appropriate response time targets and a Community Risk Management Plan is being developed. Consultation on the plan and response times will be undertaken before the end of 2022 and Cabinet approval sought in 2023.

Locality Budget - I still have some funds available and would welcome requests for funding projects from local community groups and sports clubs.

Keith.Welham@suffolk.gov.uk
01449 673185 or 07831 705 714

CHIMNEY SWEEP

ECO SWEEP
CHIMNEY SERVICES

- NEW POWER SWEEPING METHOD USED FOR A MORE THOROUGH CHIMNEY CLEAN THAN BRUSHES.
- INDUSTRIAL HEPA FILTERED VACUUM.
- FULLY INSURED.
- INSURANCE RECOGNIZED CERTIFICATES ISSUED.
- SPOTLESS, RELIABLE AND FRIENDLY SERVICE.
- ALL CHIMNEYS, WOOD BURNERS, AGA, BOILER FLUES SWEEP.
- GUILD OF MASTER SWEEPS CERTIFICATED MEMBER.



TEL. 01359 232335

COLNE ROOFING
Stowupland
Jon Johnson



Specialising in:

- New roofs
- Re-roofing
- Repairs
- Lead work
- Gutter maintenance



References upon request

Contact details:
07917 548441
colnerroofing@gmail.com

RH SECURITY & ELECTRICAL ELECTRICAL CONTRACTORS

Covering all Of East Anglia
Domestic, Commercial & Industrial Installations

Electric roller garage doors



Automated gates



Replacement Consumer Units



TELEPHONE
07909524552



OUR SERVICES

- Electrical Inspection
Condition Reports (EICR)
- CCTV Installations
- Automated gates
- Rewires
- Electric heating (inc.
Underfloor Heating)
- Extra Sockets and Lights
- Garden Power & Lighting
- Kitchen Installations

WHY CHOOSE US

- ✓ Over 30 Years Experience
- ✓ Fully Qualified
- ✓ Insured
- ✓ All work Guaranteed
- ✓ Part P Registered Company
- ✓ NICEIC Approved Contractor

CONTACT Tel. 07909 524552 Email. richard@rhsecurityandelectrical.co.uk

DISTRICT COUNCILLORS' REPORT

NOVEMBER 2022

Cabinet Meeting on 3 October

Car Parking Strategy - Cabinet approved a Joint Car Parking Strategy which has the following aims:

- To ensure that everyone has access to sufficient, good quality, safe and welcoming car parking opportunities;
- Make a real difference to how we plan for the future;
- Supports economic growth opportunities;
- Reduces the impact of our lives on the environment.

Unfortunately, the strategy has no provisions for discouraging use of the private car or improving the safety of pedestrians and cyclists. The data collected for the study showed that around 50% of car trips to council owned car parks were of less than 1.5 miles. We consider that the impact on the environment would be reduced by using a bus, a cycle or walking.

Council Tax Reduction Scheme - Cabinet also considered proposals to amend the Council Tax Reduction Scheme. Cabinet agreed to consult on a scheme to increase the council tax reduction for eligible household from 95% to 100%. Currently households who receive benefits such as Universal Credit have reduced council tax bills depending on the amount of benefit they receive; benefits may change from one month to the next and MSDC is then required to send a new council tax bill. Many households enter arrears and the cost of collecting arrears is often greater than the arrears themselves.

Community Infrastructure Levy - Around £130,000 in developer contributions has been allocated by MSDC to:

- Funding a study into Thurston railway station pedestrian access improvements - £100,000
- Improvements to Ringshall Play Area and Botesdale Recreation Ground.

What's Next for Stowmarket - Almost 350 residents, businesses and community groups attended the John Peel Centre for the public exhibition to find out more about major projects underway in Stowmarket. The event was coordinated by the Stowmarket Vision Group which includes Mid Suffolk District Council, alongside partners including Stowmarket Town Council, the John Peel Centre, Old Fox Yard, and the National Food Museum.

The lease to the John Peel Centre of the former NatWest bank has finally been agreed, having been held up for far too long by MSDC.

Local Planning Issues - There is still no firm date for committee to consider the planning applications on land opposite the church: the Landex application for approval of reserved matters and the outline application for 14 homes on land behind the Landex site.

On 12 October, Planning Committee will be considering another application for development within the Gateway 14 site. This is for outline permission for the building proposed as a distribution centre for The Range, including open space and landscaping, car and cycle parking, highway works, and other associated works.

Ashes Farm, land to the north of Newton Road, Stowmarket. Approval has been given to the outline planning application for the erection of up to 300 dwellings with a new single access onto Newton Road between the A14 bridge and Ashes Farm. This development will link with the Diapers Farm development which also has outline permission. The spine road of the combined development will link with Stowupland Road, just south of the A14 bridge as well as Newton Road.

Committee considered an application for approval of reserved matters in respect of the Diapers Farm site and deferred a decision pending further discussions between Planning Officers and the applicant; concerns included road, pedestrian and cycling safety issues, traffic noise from A14 and proximity of proposed dwellings to A14.

In Old Newton, the site for 64 homes on land south of Church Road, with access almost opposite the community centre has received approval and is likely to commence shortly. If you are walking in that direction, watch out for a footpath diversion as you approach Old Newton.

Electric Bus Project - A Task and Finish Group of six MSDC Councillors has commenced work on planning how best to serve our residents with the two electric minibuses which are to be acquired by MSDC as a result of a Green and Liberal Democrat proposed budget amendment. Keith Welham is a member of that working group.

Suffolk Climate Change Partnership - The Partnership, which includes MSDC, is hosting a Suffolk Retrofit Conference on 13 October. The event is aimed at architects, engineers, contractors, consultants, surveyors and landlords among others. The hope is to unite local businesses, public sector leaders and training providers to explore the commercial, environmental, public health and socio-economic benefits of retrofitting homes at-scale and deliver a carbon-neutral Suffolk by 2030 in line with Suffolk's Climate Emergency Plan.

Locality Funding - We still have funds available and would welcome applications from any local club or organisation in need of funding towards the cost of a local project.

Councillor Keith Welham
keith.welham@midsuffolk.gov.uk
Telephone: 01449 673185

Councillor Rachel Eburne
rachel.eburne@midsuffolk.gov.uk
Telephone: 01449 673311

Andrew Bingham

INDEPENDENT FUNERAL SERVICE

Stowmarkets Independent Family Funeral Service

24 Hour Personal Service • Private Chapel of Rest • FREE Parking



Telephone: **01449 771666**

www.andrewbingham.co.uk



The Nutshell, Milton Road South, Stowmarket, Suffolk IP14 1EZ

Golden Charter
Funeral Plans 

STOWUPLAND COLLECTION POINT

If any individual, school, church or business would like to become a collection point for the Eco Future Group in Stowupland please contact Stowmarket Eco Future Group directly. Contact details can be found in their article.

Please don't leave your recycling on the editor's doorstep as I'm unable to help with this.

Ed.

JOHN BULL MOTORS LTD

**Petrol and Diesel
MOT testing
Servicing and repairs**

**Unit 7B Charles Ind. Estate
Stowmarket**

Phone: 01449 774150

Fax: 01449 675898

**Email:
Johnbullmotors@btconnect.com**

TOMLINSON GROWDCARE



JOHN DEERE

Horticultural & Garden Machinery Suppliers

Sales Service Parts Repairs Toys

Ride on mowers from £1899 inc vat

Walk behind petrol & battery mowers from £249 inc vat

Strimmers, hedge cutters, blowers, chainsaws etc

Garden tools, paddock & turf machinery

Service & repair all makes



Set in over 20 acres - Try before you buy

Established in Buxhall since 1991 - We hope to see you soon

Brettenham Road, Buxhall, Stowmarket IP14 3DL
01449 736060 www.tomlinsongrowdcare.co.uk

AL-KO

EGO

ECHO

WEIBANG

NRH

PATIOS & DRIVEWAYS LTD

BLOCK PAVING SPECIALISTS

- PATIOS
- DRIVEWAYS
- PATHS
- GARDEN WALLS
- TURFING
- SHINGLE DRIVES

**CALL US FOR A FREE ESTIMATE ON:
01449 404225 07771 728481**

E: BRETTNOELHUBBARD@GMAIL.COM
WWW.NRH.BIZ



C.M. Hayward

Electrical Services

Lothlorien, Church Road,
Stowupland, Stowmarket,
Suffolk. IP14 4BH

01449 678213

STOWUPLAND HIGH SCHOOL

NEWSPAPER CLUB

Open Evening Report

Stowupland High School recently opened its doors for the first open evening since COVID, and what an Open Evening it was! It was an exciting opportunity for prospective students to gain an insight into what it is like to be a pupil at Stowupland High School. The pupils were given the opportunity to meet the school staff, as well as being able to visit the school facilities.

The evening commenced with a typical school assembly from Mr Brewster informing parents and prospective pupils about the school and the activities hosted by each department. Visitors were then free to choose which departments they would like to visit afterwards and there were a range of facilities to visit.

The science department was split into three classrooms each equipped with different experiments which really impressed the visitors. In the Biology classroom, the public could see the dissected parts of a pig, an experiment with algae and "maggot art." Maggot art is where maggots are dipped in coloured dye, and the maggots race across a sheet of paper, with the aim to study how they move. Hundreds of young children took part in the experiment throughout the evening – they were rather brave watching! There was also a table with microscopes, looking at the cells of an onion, for those who may have felt a little squeamish.

In the Chemistry classroom, Elephant's Toothpaste was made by the Chemistry teacher. Elephant's Toothpaste is an experiment where Hydrogen Peroxide, Potassium Iodide and soap are mixed to produce a chemical reaction that looks like a big squirt of toothpaste made famous on YouTube. People could attempt Secret writing where you would write on a piece of paper in a special ink and use a hairdryer to make it invisible. You could also make slime. Whereas, in the Physics classroom, students could attach balloons to CDs, have a hair-raising experience with a Van de Graff generator and participate in an explosive experiment with cans of fizzy drinks. Those cans were heated to high temperatures and then crushed by being added to cold water. I think the Science department was my favourite to visit; it was so cool!

Across the school in the Food Technology rooms, selected students of Stowupland High made some delicious biscuits, shortbreads and cakes which visitors were allowed to sample. On the topic of food, the canteen of Stowupland High served some warm goodies throughout the evening.

There was a variety of hot food that could be enjoyed; I think that most visitors were tucking into the delectable treats being handed out in the evening!

Near the canteen was the Art department, equipped with paints and art work produced by existing students including some A-Level pieces of art. Art is one of the most enjoyable subjects at Stowupland High School for students. Many love to unleash their creativity. Nearby, with a very different focus, was the Maths and Computing departments. There, prospective students had to rearrange shapes in different patterns. Some people were also completing Times Table Rockstars on the Chromebooks, which are also available for students at school. In the Computing classroom, students were playing games, coding, making games and having fun, using the school software available.

In the English Department, a large set of Scrabble was laid out on the table for parents and children to add words to the game. In addition to that, there was also a desk for children to practice their spellings and add their favourite adjectives based on the senses. The Harry Potter fans amongst us were able to head to the library, where there was Butterbeer, Quidditch and so much more. Posters were decorated and the room was dimly-lit. It gave off a feeling like it was actually Hogwarts and really excited the prospective students!

All in all, the evening was a great success and we look forward to welcoming the new students that decide to join Stowupland High School next September. It really was an evening to remember and any families that missed it are able to book Tea and Tours with Mr Brewster, the Headmaster, to experience Stowupland High School too.

By Joshua Bridges, Year 8



FREEMAN COMMUNITY PRIMARY SCHOOL



With the first half of the Autumn term just finishing and the second one beginning as this issue of Telstar comes out, we will take a look back at what the children have been up to so far this academic year and introduce our School Council.

At Freeman we have a School Council comprising of two representatives from each class in Years 1 – 6, who are chosen by the pupils in their class.

It is the Council's role to be the voice of the pupils; representing their friends and peers in a weekly meeting with staff where they share the views and concerns of other pupils, help improve the school and also organise charity and fund-raising events.

Previously they have chosen play equipment for the playground, interviewed staff applying for positions both at this school and other schools in the area, and organised events and activities to raise money for charities such as Children in Need and the World Wildlife Fund.



Here are our newly elected council for the 2022/2023 Autumn Term.

Acorn class (Reception year)

Our new Reception class have been painting self-portraits with the help of a mirror, identifying their features such as hair, mouth, eyes, noses and ears. They then independently selected the colours they needed for painting. The end results were fantastic.



They have also been practising writing their names in glitter. First, they wrote their names on a whiteboard, carefully copying their name from their name card. They then wrote it on black paper using paint, before sprinkling glitter over the top. What a fun way to practise their names!





Cherry Tree class making smoothies

Cherry Tree (Year 1)

As part of Cherry Tree's food technology topic, the children sorted foods into fruits and vegetables and discussed the differences.

They then made some smoothies, trying various fruits and vegetables to help them decide which type of smoothie they would like to make. The smoothies were delicious.

Maple (Year 2)

Maple class have been enjoying visiting the school library and finding new books and authors they hadn't read before. They also enjoyed showing the books they had chosen to their friends, sharing their opinions and making recommendations!



Maple class sharing their books



Beech class (Year 3)

Our Year 3 class learnt about eating seasonal food in their Design and Technology lessons. They made an apple and blackberry crumble making sure that they weighed and measured the ingredients accurately.

They then took their crumbles home to share with their families. Unfortunately, none of the crumbles made it to the staff room where we had a lot of eager staff members happy to try them (for quality purposes of course).



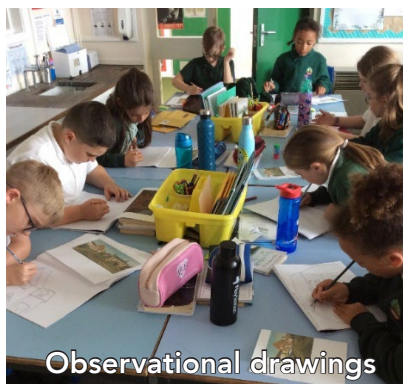
Willow class (Year 5)

Willow Class have been drawing observational drawings in Art, looking at pictures of buildings in our local area and carefully drawing them in their sketchbooks.

They have also been learning about the properties of materials in science.



Experimenting with material properties



Observational drawings

They planned and carried out an experiment to test which properties a material has. Miss Murton was very impressed with their hard work!

Oak class (Year 6)

Oak class learnt about the evacuation of children from the cities to the countryside during the second World War and experienced what it might have felt like arriving to their destination and being picked by the local people. Some of the class had really positive experiences of evacuation while others faced hardships and were unhappy.



We discussed the fact that Stowupland residents took in a number of evacuees and what school would have been like for them here.

And finally..

In Forest School, Beech class celebrated the Queen's love of the countryside using her silhouette to explore different the textures and patterns in nature.

They also had some autumnal fun with the conkers they found in the wood, making jewellery, decorations and even playing conker golf!



'From tiny acorns do might oaks grow'

IMPORTANT CONTACTS

Citizens Advice

www.midsuffolkcab.org.uk - 01449 676060
or 01449 676280 - 5 Milton Road South,
Stowmarket, IP14 1EZ

Doctor

Emergency - 999
NHS Direct - 111
Combs Ford - 01449 678333
Stowhealth - 01449 776000

Emergency Numbers

Power Cut - 0800 31 63 105
Gas Leak - 0800 111 999
Water Leak - 0800 771 881

Good Neighbour Scheme

HELPLINE: 07591 539621

Member of Parliament

Jo Churchill - jo.churchill.mp@parliament.uk -
Constituency Office, 10 Hatter Street,
Bury St Edmunds, IP33 1LZ - 01284 752311
House of Commons - 02072 198487
<https://www.jochurchill.org.uk/>

Mid Suffolk District Council

www.midsuffolk.gov.uk
Keith Welham - keith.welham@midsuffolk.gov.uk -
01449 673185
Rachel Eburne - rachel.eburne@midsuffolk.gov.uk -
01449 673311

Police

<http://www.suffolk.police.uk/contact-us>
<https://www.suffolk.police.uk/advice>

Police Safer Neighbourhood Team

PC 14443 Stefan Henriksen - Police Station,
Violet Hill Road, Stowmarket, IP14 1NJ
stefan.henriksen@suffolk.pnn.police.uk - Phone: 101

Samaritans – 116 123

Stowupland Village Website

www.stowupland.com

Parish Council Website

www.stowupland.suffolk.cloud

Suffolk County Council

www.suffolk.gov.uk 01449 673185
Keith Welham - Keith.Welham@suffolk.gov.uk
SCC - General Contact No. 0345 606 6067

Schools

Stowupland High School -
www.stowuplandhighschool.co.uk - 01449 674827
Freeman Community Primary School -
www.freeman.suffolk.sch.uk - 01449 612067

Vets

Cedarwood - 01449 676966
Stowe Vets - 01449 613130

DIARY DATES

NOVEMBER

TUES 1	9.30 Jubilee Court 9.50 Green	Mobile Library
WED 2	9.30 pm Village Hall	Mother and Toddler group
WED 2	2 - 4 pm Village Hall car park	Mobile post office
WED 2	7.30 pm Village Hall	Local History Group – "Suffolk Artists"
THURS 3	2 - 4 pm Village Hall car park	Choose Refills mobile shop
THURS 3	7.30 pm Village Hall	Short mat bowls
THURS 3	7.30 pm URC Hall	Parish Council Meeting
FRI 4	7.30 pm Cricket Club	Quiz Night
SUN 6	7.30 pm Village Hall	Country & Western music club
MON 7	evening Village Hall	Dance Club
WED 9	2 - 4 pm Village Hall car park	Mobile post office
THURS 10	7.30 pm Village Hall	Short mat bowls
FRI 11	7.00 pm Village Hall	EGM and public meeting – Village Hall redevelopment
SUN 13	7.30 pm Village Hall	Country and Western Music Club
MON 14	evening Village Hall	Dance Club
WED 16	9.30 am Village Hall	Mother & toddler group
WED 16	2 - 4 pm Village Hall car park	Mobile post office

THURS 17	7.30 pm Village Hall	Short mat bowls
FRI 18	7.30 pm Village Hall	Community Quiz Night
Sat 19	10 – 5pm Christmas Fayre	Holy Trinity Church
MON 21	evening Village Hall	Dance Club
WED 23	9.30 am Village Hall	Mother & toddler group
WED 23	2 - 4 pm Village Hall car park	Mobile post office
THURS 24	7.30 pm Village Hall	Short mat bowls
FRI 25	10.00 - 12.00 URC chapel	Coffee morning
FRI 25	7 for 7.30 pm Village Hall	Community Bingo
SUN 27	7.30 pm Village Hall	Country & Western music club
MON 28	7.30 pm Village Hall	Dance Club
TUES 29	9.30 Jubilee Court 9.50 Green	Mobile Library
WED 30	9.30 am Village Hall	Mother & toddler group
WED 30	2 - 4 pm Village Hall car park	Mobile post office

DECEMBER

THURS 1	7.30 pm Village Hall	Short Mat Bowls
THURS 1	2 - 4 pm Village Hall car park	Choose Refills mobile shop
FRI 2	7.30 pm Cricket Club	Quiz Night
WED 7	7.30 pm Village Hall	Local History Group – “Dads Army” History of a TV legend

MSDC General Contact No. 0300 1234000

Mobile Library - 07721 879855

Parish Council

Sally Reeves - Chairman - 01449 745739

sallyreeves@stowuplandpc.co.uk

Laura Beeson - 07918 808387

laurabeeson@stowuplandpc.co.uk

Donna Bridges - 07736 348335

donnabridges@stowuplandpc.co.uk

John Hayward - 01449 674717

johnhayward@stowuplandpc.co.uk

Laura Johnson - 07826 851030

laurajohnson@stowuplandpc.co.uk

Debra Melhuish - 07979125904

debramelhuish@stowuplandpc.co.uk

Paula Murton - 07906 677817

paulamurton@stowuplandpc.co.uk

Kevin Stevens - 07747 605042

kevinstevens@stowuplandpc.co.uk

Ray Studd - 01449 676606

raystudd@stowuplandpc.co.uk

Jerry Voden - 01449 703717

jerryvoden@stowuplandpc.co.uk

Clerk to the Parish Council - Claire Pizzev

parishclerk@stowuplandpc.co.uk - 01449 677005

2 Broomspath Road, IP14 4DB

Parish Council Minutes of meetings and agendas are available on the Parish Council Website

www.stowupland.suffolk.cloud

Village Hall Bookings

Lisa Tunbridge - Phone - 07862740830

stowuplandvillagehallbookings@gmail.com

Village Clubs

Baby and Toddler Group -

Kelly Woolhough - 01449 678550

Book Group - Patricia Hodgkins - 01449 672127

Stowupland Bowls Club - Graham Newman -

01359 240846

Community Events - Keith Welham - 01449 673185

Country and Western - Pat Murphy - 01449 677405

Dance Club - Mary Durham - 01449 672601

Local History Group - Jerry Voden - 07951 086383

Short Mat Bowls - Pam Fayers - 07713026696

Sports and Social Club - Mark Dye - 07799 662491

Stowupland Cricket Club

www.stowuplandcricketclub.co.uk/

Stowupland Falcons Football Club -

stowuplandfalconsfc.co.uk

Stowupland Sports Centre -

info@stowuplandssportscentre.co.uk - 01449 672531

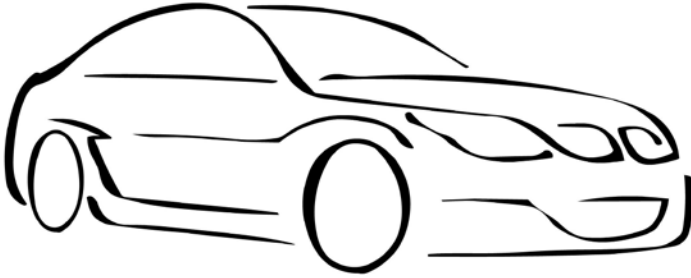
Stowupland Wildflower & Biodiversity Group -

Keith Welham - 01449 673185

Stowmarket Wildlife Group - John Thompson -

swtstowmarket@gmail.com - 01449 676471

FAST TEST STOWMARKET



MOT~SERVICING~AIR-CON

Fast Test can service all makes and models of cars and light commercial vans, as well as welding repairs, computer diagnostics and Air-Con re-gassing.

Fast Test can also offer a lift home or to work in the surrounding Stowmarket area or a courtesy vehicle.

Contact: Adam Bennett
Tel: 01449 770902

Address:
Unit 4, Tomo Business Park,
Tomo Road, Stowmarket,
Suffolk, IP14 5EP



The
**United
Reformed
Church**

U.R.C CHAPEL

NEWS

Minister: Revd Robert Sheard
Telephone 01449 678173

The next coffee morning to be held at the Chapel is on Friday 25 November 10am to 12noon. A Christmas draw will be held at this event. Please give us a visit. Thank you to all those who came to the coffee morning on 30 September and for your generosity. £300 was raised for Addenbrooke's Teenage Cancer Trust Ward. Also, thank you to all those who helped. It was a very happy friendly event.

We united with Holy Trinity Church on 25 September for their Harvest Songs of Praise, and we united again on 2 October at the Chapel for our Harvest Festival Service when we were pleased to have Revd Brin Singleton join us and take part in the service. We wish him well as he retires to pastures new. At both services a donation of produce was made to the food bank. Thank you to all those who contributed to make this a very worthwhile donation.

Services continue to be held at the URC Chapel, Church Road, Stowupland each Sunday at 10.30am and you are cordially invited to join us in worship. A warm welcome awaits you.

The Speakers for November are as follows:

06 November Richards Edwards

13 November The Revd Norman Tharby (Remembrance Sunday Service)

20 November Jim Spencer

27 November Mary Playford

Joyce Gardiner

MINISTER'S MESSAGE

Psalm 30: 4:

Sing praise to the LORD, all his faithful people! Remember what the Holy One has done and give him thanks!

November is a very much a time of remembrance, perhaps more so this year with the passing Of Queen Elizabeth II. We start All Saints Day on 1 November when the Saints are remembered, then on 5 November we Have Guy Fawkes Day or bonfire night, when we remember the Gun powder plot, when they tried to blow up the Houses of Parliament.

On 11 November we have Remembrance Day, followed by Remembrance Sunday, (the nearest Sunday to Remembrance Day) a time when we remember the dead of two world wars, but not just the First and Second world wars, but also The Falklands, The Gulf, Afghanistan, Iraq as well as other wars.

For some it will bring back memories of their time in the armed forces, comrades, friends and family that they have lost. For others who did not fight, it is also a time to remember family and friends, even some family they never knew. As years go by there are less and less people about who fought in the two world wars, this in a way makes it more important to remember them, but also, with what seems to be an escalation in wars around the world, we also must remember the fallen in those and these wars.

As Christians, it can often be hard to understand wars in whatever context, but we do not have to like war to sometimes see it as a necessary evil, but at this time of remembrance it should be used as a time to stand back and take stock, to encourage governments to take stock, also to find other ways than war to make the world better for everyone. We will all come in different ways to remember, some will go to Church, some to the cenotaph, others will do it quietly on their own. What is important is that we remember and pray and that through remembrance comes reconciliation and peace.

Yours In Christ, Robert

The Reverend Robert Sheard (United Reformed Church Minister of Stowmarket, Debenham, Stowupland, Mendlesham and Haughley.)

COFFEE MORNING

Friday 25th November 2022

Stowupland URC Chapel 10am – 12noon

Coffee, Tea and Cakes

All welcome



British Beauty Salon

November
OFFER

£10 OFF!

60 or 90 minute massages!

Only available in November.

For more information & online
booking scan the QR code
below.

<https://british-beauty.co.uk>





F. G. BROWN – OPTICIANS
Denmark House, 41 Bury Street,
Stowmarket.

Tel:- 01449 612812/674030

As independent opticians we offer a more personalised eyecare service that you can trust for all the family including:-

Optomap retinal examination

Colorimetry

A wide range of competitively priced frames and spectacle lenses

Contact lenses

Prescription and non-prescription sunglasses

Your sight care is our priority



Locksmiths

**24 HOUR LOCKSMITH
BASED IN STOWUPLAND**

NO CALL OUT FEES

All locks supplied and fitted

TEL: 01449 673770

(HOME)

TEL: 07525 168895

(24 HOUR)



Email: arron@stowmarketlocksmiths.co.uk
www.a1carpentryandlocksmith.co.uk

*Fed up of running around
after your car?*

Why not give us the inconvenience
– it's part of our service

WE COLLECT & DELIVER

Servicing, Welding,
MOTs arranged

Air-conditioning recharged

General Repairs –
shocks, clutches, brakes etc
All work guaranteed

S & P Motocare

Est 1990

Contact: Shane

Tel: 01449 771102 or 07802 545737

***Personal Service at
Competitive Rates!***

HOLY TRINITY CHURCH

NEWS

HOLY TRINITY CHURCH
STOWUPLAND

Churchwardens : Mrs Ann Doubtfire Tel. 770363
 : Mrs Sue Hayter Tel. 613710
Email: susanhayter7@msn.com
<https://www.achurchnearyou.com/church/2082/benefice/>



Dear Friends

November's remembrances bring our Church's year to its close with the assurance, in the Festival of Christ the King, that God's love in Christ ultimately triumphs, as John's Gospel assures us 'The light shines in the darkness, and the darkness did not overcome it' Jn 1.5.

November begins with the midweek Festivals of All Saints and All Souls, along with the lighting of candles as we remember the love shared among us in our own dear faithful departed, and the sainted of our faith whose light encouraged and served their generation in their day, and whose stories continue to encourage and serve us in our day.

As I now no longer serve here as Rector to Haughley with Wetherden and Stowupland, I continue to hold you all in my prayers as now you look to others to serve you in ministry and you prepare to select my successor. May I thank all whose faith has shone as 'the light shines in the darkness' over these last years, and encourage you to continue to serve, pray and witness to and for our village communities through this time.

In farewell I offer you this prayer: -

*Dear Lord, call to our churches a true Shepherd,
a man or woman of God,
a minister of Christ,
and make us, with him or her,
a church joyful in worship and united in witness,
working, caring, praising, loving,
to the glory of your Name,
through Christ Our Lord. Amen.*

Yours in Christ, Brin.

achurchnearyou.com Haughley/Wetherden/Stowupland, continues for enquires for Wedding Baptisms Funerals and any other parochial church matter.

Services in November 2022

6th Nov	10.30am	Parish Communion
13th Nov	10.50am	REMEMBRANCE SERVICE
20th Nov	9.30am	Morning Prayer
27th Nov	6.30pm	Advent Praise

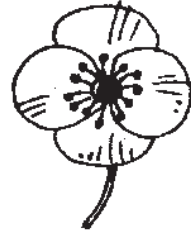
A REMEMBRANCE PRAYER:

O God of truth and justice, we hold before you all of those men and women who have died in active service across the years. As we honour their courage and cherish their memory, may we put our faith in your future; for you are the source of life and hope, now and forever. Amen.

REMEMBRANCE SUNDAY SERVICE – 13 NOVEMBER at 10. 50am

It would be good to see lots of people come to this Annual Service when the names of all those from Stowupland who served and died in the two World Wars are read.

'**LEST WE FORGET**'. A poppy wreath will be laid as a mark of respect at this act of Thanksgiving and Remembrance.



CHRISTMAS FAYRE:

Come along to lunch at the Christmas Fayre on Saturday, 19 November and browse a wide variety of stalls from which you can buy your Christmas presents. Bring the children to enjoy the Christmas Grotto! You can enjoy a lunch of baked potatoes with a variety of fillings; also, other lunchtime snacks will be on sale. Refreshments are available all day.

FOOD BANK BOX:

If you would like to donate items for the Food Bank to give those in need a helping hand, there is a box at the back of the church for you to leave your items. Thank you!

CHURCH HALL HIRE:

Please remember that the well-appointed Church Hall is available for hire at reasonable rates, and would be ideal for children's parties and small groups/meetings. For more information, please contact Sue Hayter on 01449 613710. Thank you.

CHRISTMAS CRAFT FAYRE

Saturday

19th November

10.00 am to 5.00 pm

Stowupland
Village Hall

Grand Prize Draw!

HOT SNACK MEALS

from 12 noon

REFRESHMENTS AVAILABLE

10am - 4pm

HOLY TRINITY CHURCH

For further details contact Ann Doubtfire Tel. 01449 770363

HELP TO KEEP STOWUPLAND TODDLER GROUP GOING

The Stowupland Baby and Toddler Group are calling for volunteers to help support the running of the weekly group.

The group runs every Wednesday (term-time only) between 9.30am-11.15am at the village hall and is a popular group for new parents to mix with other families, whilst little ones can play safely with a wide range of toys including time for refreshments too.

Unfortunately, the group has lost its previous volunteers and without new ones, the group could face closure.

Full advice, support and guidance is offered at all time and DBS checks are fully paid for you. If you have a few hours you could give to help support this important community asset, then please get in touch with Kayleigh Simpson, Stowupland Pre-School Manager on 01449 678550. We are hoping to recruit enough volunteers so that we can set up a rota so that it won't need to be a weekly commitment. Anytime you can give will be very much appreciated.



**Stowupland
Baby and
Toddler Group**

STAY AND PLAY FOR FAMILIES

EVERY WEDNESDAY AT THE STOWUPLAND
VILLAGE HALL (TERM-TIME ONLY)
9.30AM-11.15AM.

£3 A FAMILY - THIS INCLUDES SNACK AND DRINKS

NO BOOKING REQUIRED - JUST TURN UP

Computer Repairs



Windows, MS Office, E-mail,
Internet, Broadband, Security

Solutions resolved remotely
(for those in self-isolation)
or in your own home

One to One tuition.

Phone Shelli of MPM on
01449 770704
07733 262116

Let a local company in Stowupland
support you.

Eastern Frames

Bespoke Framing Service

Greeting Cards & Photo Frames
X-Stitches Stretched & Framed

Fast & Reliable Service

www.EasternFrames.co.uk

Red House Farm,
Station Road
Haughley.

Tel. 01449 675897

Monday – Friday
9.00am – 5.00pm

Saturday
9.00am – 12noon



07534 525 263

01449 258 254

Gidney 
Plumbing & Heating Ltd

Professional & Reliable Service



**Plumbing, Bathrooms, Heating, Boilers, Servicing,
Underfloor Heating, Tiling, New builds & Renovations**

enquiries@plumbinginsuffolk.com

www.plumbinginsuffolk.com

STOWUPLAND FALCONS FC



Hello from everybody at Stowupland Falcons FC! For those who aren't familiar with the club or are new to the area, we're one of the largest grassroots community football clubs in the local area. Stowupland Falcons FC can trace its roots back to the late 1800's. We have boys, girls and mixed youth teams that start at Under 7's and run all the way through the various age groups until Under 16's and Under 18's. We also have 6 adult teams – 1st team, Reserves, A's, Women's, Sunday Men's and Vets.

Every Saturday we run our Saturday Morning Club for boys and girls who want to give football a try before entering into a team. The club has been running successfully for many years and has seen the inception of countless Falcons' youth teams. This club is run by volunteer coaches and we don't charge a penny for kids to come along and play. It's open to boys aged 4-7 and girls aged 5-11. No need to book, just turn up and play! Thanks to the success of the England Lionesses winning the Euro's in the summer, we've seen a huge boom in girls wanting to play football. On the back of this we've been able to create new teams and therefore need more girls to come along to the club. We would love to have more girls aged 5-8 coming along and giving it a try! We're always open to having new girls and boys coming along, if you'd like more information, please get in touch with us via Facebook, Instagram or Twitter.

The club has had some recent success on the pitch, most notably our 1st team winning the Suffolk Junior Cup for the last two seasons, beating the same team in the final on both occasions. This season they will be looking to get promoted to the Senior Division. Elsewhere in the club, our current U14 Blues finished as runners up in their League Cup last season, whilst our current U15's, who are actually playing up a year at U16's have also had some success, but have been very unlucky at the same time. In the 2019/20 season they were County Cup Semi Finalists, however this was cancelled due to the COVID pandemic. They didn't have much luck the following season either, in 2020/21 they were joint top of league, but again, COVID reared its ugly head and ensured that the season was curtailed early. However, they weren't to be denied for a third time. They ended last season as League Champions and League Cup runners-up. This season's U16's also tasted a similar fate last season, winning their league, thanks to an unbeaten season, and were also runners-up in their League Cup.

The club runs many fundraising events throughout the course of the year which range from race nights to quizzes and our ever popular 5-a-side tournament in June. Our next couple of events include our Halloween Party on Sunday 30th October, 3pm-5pm at the Sports and Social Club - £3 for a ticket, per child, food included. Spooky dress-up is a must and there will be prizes for the best dressed, but also for the best carved pumpkin, so please bring these pumpkins already carved with you. Fun and games throughout the event. In early December, we will be hosting our famous Christmas Hamper Evening, stay tuned to our Facebook, Instagram and Twitter for more information!

Social Media Channels - Facebook - Stowupland Falcons FC
Twitter - @StowFalcons Instagram - stowuplandfalcons



LOCAL HISTORY GROUP

By the time you are reading this we will have been treated to an amazing talk by Nicky Reynolds on the Women's Land Army and Ed Nicholls will have given us a virtual tour of Haunted Pubs. See below for Jerry's notes on Nicky's Soil Sisters but you will have to wait till next month for Jerry's take on Ed's talk.

You might still have time to join us on 2nd November for John Day's talk about Suffolk artists, '**Gainsborough through to Becker.**' And you have plenty of warning to arrange to join us on 7th December for a talk by Dave Steward on 'Dad's Army'. Of course, in these days, it goes without saying that events may have to be cancelled at short notice, though we always endeavour to have an alternative topic.

**If you have any questions or comments, please contact Jerry Voden
01449 703717: secretary@stowuplandlocalhistorygroup.org**

.....

Our thanks go to Katie Fontana who gave members of SLHG a fascinating tour of Stowupland Hall. Although the Hall itself is now office space for her company Plain English, it is obvious that she and her partner are very proud to be preserving the fabric and history of the land and buildings. In the course of their renovations, they have literally uncovered structures that add to the story of the property and to our understanding of work that previous owners had undertaken. Our thanks also to Marie Ryan, whose grandfather Thomas Carter lived in Stowupland Hall during the 1930's and 40's, for allowing us to see some family photos that were taken in the Hall.

Read on for Jerry's retelling of our September talk: -

Nicky Reynolds came this month to talk about several titles rolled into one. The central theme was "Soil Sisters" but they were also known as the "Women's Land Army" or "Soil Cinderella's" This was of special interest to Stowupland as several of our farms lost labourers to the war and required the assistance of these ladies. Some of those working here during WW2 were located near Columbine Hall. In our display that Sandra set up there were pictures of the ladies performing various farming activities. It is thought they were working on Columbine Hall land, but Nicky promised to do some work to try to find for sure.

Why and when did this all start? Well as long ago as the 1860's there was social reform to involve and train women in agricultural work and nursing - starting as early as 1899 by a lady called Viscountess Warwick. Colleges were set up to promote these occupations and when he came to the throne King Edward VII added his support. Reading Women's Hospital became a training facility and a centre in Kent was set up for teaching farming skills.

WWI started in the autumn of 1914 and men in the regular army were deployed to France at an early stage.

Sadly, losses in those early months of the war made it clear that replacements were needed for the front, and although agriculture was a reserved occupation many heeded the call, and this left labour shortages on the land. Fields were left fallow, and crops unharvested which was catastrophic to the country. Food committees were set up as early as 1915 to sort out priorities of food production whilst also ensuring there was enough ammunition making its way to the front. Lady Denham became involved and the Women's National Service Corps was formed. They were signed off ready to go in the summer of 1916 and responsible for ensuring enough grain and fodder was available for the war situation and to provide timber for the country.

It was estimated that 10,000 women were needed for farming alone. Selection was tough with 3 to 4 weeks training needed, with pay at the time of 3s 4d a week which did not leave much for any other activities. April 1917 saw the Women's Land Army established with a strength of 40,000, 10,000 of whom were actively involved in farming. This continued until the armistice in November 1918.

WWII was declared on 3rd September 1939 and this time there was an immediate move to reform the Women's Land Army, with a big push from Lady Denham who had the experience to start up again, forming her HQ at her country estate. Nicky told us the story of her husband, who decided **enough was enough** and left home and spent the war at their Scottish home, Nicky added she was unsure when he returned. The age to sign up was 17 and the training regime in those days was hard with home sickness being a significant problem for the younger girls. Skills that had to be mastered included driving tractors, harvesting, cutting timber and many other jobs needed on the land, including servicing of equipment and rat catching!

Pay was 32 shillings a week but some of that was reclaimed for board and lodgings. Uniform clothing was provided but a total of 36 clothing coupons were required for the initial kitting out when recruited. This was not always popular with the girls, but bosses adapted a take or leave it attitude - if a girl refused to hand over their coupons they could not sign up. So tough working conditions with a 6-day week but a day of rest on a Sunday (unless the cows needed milking). Nicky had copies of the Land Magazine that was established in April 1940. Many of the skills learned during the time girls were in the land Army were of use when the war came to an end in May 1945 as women returned to civilian life.

This was a talk of two halves with a refreshment break in the middle of the programme, before an interesting and good informative Q and A for all our members. My thanks to Neil for organising this very informative talk for our group meeting, and to Nicky for the presentation and the exhibitions of uniforms and other items of interest she brought along for us all to see.

And now Neil's **Stowupland Vicars No 9** and, just to prove he is not infallible, an apology, **'In the previous part of the series (No 8) on the parish's vicars, I inadvertently confused my notes for the Reverends Arch and Lark; therefore, to do them both justice I am rewriting the piece on the Reverend Arch.'**

Thomas William Arch 1947 – 1954.

The Reverend Arch hailed from Wales. Born in 1898, his father was a land agent and farmer. The family lived at The Abbey at Strata Florida in Cardiganshire. The house standing in the grounds of the ruined medieval abbey is now owned by The Strata Florida Trust and is being developed as a cultural centre. He attended the nearby St. Johns School, Ystrad Meurig. Thomas later married Laura Lilian Davies in Lancashire. He was living in Birmingham from at least 1935 and in 1939 where Thomas is a “missioner to the deaf and dumb”. I have not been able to discover if he had any other parishes either before or after his time at Stowupland.

A son Gwyn played the organ in the church during his father’s time here and later taught music at Rickmansworth Grammar School. Gwyn’s son is Dave Arch, the musical director of BBC’s “Strictly Come Dancing” and can be seen regularly conducting the band on the show.

Thomas William Arch died and was buried at Catton in Norfolk in 1972.

Ronald Elgin Lark 1955 – 1962.

He was born in 1921, the son of Edward and Elsie Lark. In 1939 the family were living in Great Yarmouth where Ronald was an apprentice engineer. He married Jeanette May Nicholls in 1948.

He served in the RAF during the war being awarded the Distinguished Flying Cross in 1944.

After the war he trained at Bishops College, Cheshunt and was ordained at Bury St. Edmunds in June 1954. His first post seems to have been as Assistant Curate at St. Augustine’s Church, Ipswich from there moving to Over Kellet in Lancashire as vicar from 1954. Then in March 1959 he was instituted to the united benefice of Stowupland and Old Newton. After leaving the parish he lived in Beccles for a while before becoming vicar of 2 more benefices in the county – Worlingham then Cotton and Wickham Skeith. He was also chaplain to the Suffolk wing of the Air Training Corps and the Royal Air Force Association.

Ronald Lark died in 1974.

DOWN MEMORY LANE

I hope someone can provide a date for this photo of Lenny Wade baling up straw.

I was reminded by an article in Telstar November 1983 that stubble burning used to be best farming practise but in 1983, following a dry, windy harvest, arguments were being put forward as to whether or not straw stubble burning should be banned.



JJ'S Waste Services

- All Types Of Rubbish Cleared
- End Of Tenancy
- Garden/Garage
- Office Clearance
- All Types Of Scrap Metal Collected

FULLY LICENCED

Call Us On: **07912 172826**

www.suffolkwasteremoval.co.uk
johnjames1970@icloud.com

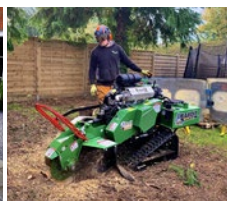
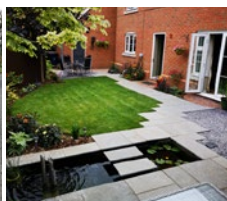
LET'S
GET
WASTED



W. Jarvis & Son
Tree Services
& Landscapes



Scan me!



All aspects of tree surgery, landscaping and fencing undertaken.

Fully insured, 24hr callout,
council approved contractor
with over 40 years in the industry.

Call for a free estimate & advice

T: 01359 241958

M: 07891 208710 • 07850 046504

Visit our website for information about
our company and the work we do
www.wjarvistreeservices.co.uk

DOWN TO EARTH

KATE ELLIOTT

In winter, gardening is at its hardest. Anyone can make a garden look good in the full flush of midsummer, but a grey November day is less forgiving. Green is the answer. Green and yet more green. Much is written and said about the 'bones' of a garden provided by hedges and trees but maybe we underestimate the sheer colour and value of evergreen plants, be they in the form of a box hedge, large tree or leaves of a plant in a border such as hellebores. At this time of year, you need all the structural green you can get.

The effect can be achieved simply by repeating a favourite evergreen plant. The most obvious being box. A box hedge lines all the spaces that were filled with flowers. Having been to all intents and purposes invisible for half the year, these hedges are now free from the competition of the flowers and suddenly leap out and become over winter the best thing in the garden.

The secret of making the garden look good in winter is to have the box tightly



trimmed, so that by the time the leaves fall the remaining structure looks sharp. But it is not just a hedge thing. A single green plant in the dead of winter will do the trick. We have recently planted two box balls either side of the front door here at Columbine to add structure and interest throughout the year. We also have around the garden evergreen Irish yews, holly, hellebores, trachycarpus and absolutely best of all - holm oak with its undimmed greenness of their leaves.

Evergreens are tough and most have leaves with a thick skin, a simple shape and a waxy surface - all designed to keep moisture in the leaf for as long as possible. Very few evergreens keep the same leaf for more than a year, but instead of shedding their leaves in autumn, they hang on to them until new ones start to grow in spring. This means that given mild weather they are able to continue growing all year.

Lambs lettuce, also known as corn salad comes into its own now as a delicious addition to a winter salad. It is a native plant which is hardy and at its best in winter if protected by cloches or an unheated greenhouse.

It can be grown at any time of year but has a tendency to run to seed in warm weather so is best kept as a cool-weather crop. The small oval leaves are very tender and have a nutty flavour. The plants I harvest in November through to February are sown in August but I sow another batch that will be harvested at the end of March to June. The best way to harvest them is to cut the whole plant with its mass of leaves at ground level and you shall get a fresh crop within about four weeks.

Here are some jobs you can be doing this month:

- Plant tulips in pots and borders covering them with at least twice the depth of soil or compost.
- Lift dahlia tubers after the first frosts, clean them off and store in dry compost in a cool, frost-proof place.
- Plant garlic, onion and shallots.
- Insulate your greenhouse roof and walls with bubble polythene.
- Bring potted herbs, such as parsley and chives indoors.
- Send off for seed catalogues and start planning what to grow next year.
- Give houseplants a regular mist to give extra humidity to combat the drying effects of central heating.
- Repair fences and trellis now they're becoming free of foliage.
- Clean out and scrub bird feeders and bird baths regularly to maintain hygiene.
- Make sure all tender plants are safely under cover and kept frost free.

For those of us that are affected by light, November is never a good month. Our sky darkens daily and by the end of the month it is fully dark outside by 5pm and the light levels on all but cold, frosty days are terribly low, even at midday. The answer is to get outside, whatever the weather, and walk, tidy, work - do anything to engage with this season and accept its limitations. It will pass and is necessary in order that next spring will come.



STOWUPLAND GOOD NEIGHBOURS

A volunteer service run by residents for residents

Helpline 07591 539 621

GRAHAM MOORE ELECTRICAL LTD

Blacksmiths Cottage, Silver Street, Old Newton, IP14 4HF

For all your electrical needs

For a friendly and efficient service



Call Graham on Tel: 01449 616946 Mobile: 07867 560357

- FREE ESTIMATES ● ALL WORK GUARANTEED ●

Reduce your Accountancy costs

Call Sarah Place Accountants

Professional efficient Accountants with over 15 years experience

Accounts • Book-keeping • Payroll • Sage

VAT & Tax Returns

01284 747 139

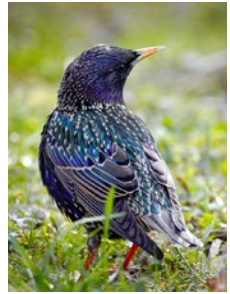
COUNTRYSIDE RAMBLER

BRIAN WARD

The trees are now changing into their autumnal colours of red, orange and yellow and I suspect the first frosts will be with us soon bbbrrrr! I will be covering my tender plants in the garden within the next few days and the non-hardy ones will be stored under cover until next spring. Thankfully the lawns have recovered and now look quite green; to help them recover further I will apply an autumn feed this will give it a boost before the colder weather sets in. I have now started feeding the wild birds again now as their natural food supply starts to diminish. Now is a good time to clean out the bird nesting boxes in case they want to use them to roost in during winter.

Although the weather was very dry, there appears to be a good crop of berries, especially on the hawthorn and blackthorn. Some of the crab apple trees are holding fruit quite well whilst others are dropping to the ground. I suspect this is all weather related.

Starlings are starting to gather in larger flocks, so we should see the spectacle of murmurations soon. Look out for information at local nature reserves as you do not want to miss this wonder of nature. The winter thrushes will soon be arriving, and fieldfares. Redwings, blackbirds and song thrushes will come across from Europe to boost our resident population. All thrushes love apples so if you have some surplus to requirements put them out on your lawn when you see these birds arrive.



Fungi season is upon us, so venture to the woodlands and admire them in all their various shapes and forms. There are many good books available to identify them in situ or take a photograph and identify them at home on the internet. Many look the same so check the gill colour underneath if possible and be careful as many are poisonous.

The weather is getting colder and that's a sign of the rutting season for the fallow and red deer. If you want to see this happen, go out early and listen for the bellowing of the red deer stags. Please keep your distance as they can be unpredictable and will outrun the finest of athletes. There are several deer parks within East Anglia that will do safaris or on foot if it is safe to do so.

The hedgehog in the garden is now a regular visitor and eating the food left out every night, how do I know it is the hedgehog eating the food you may ask, well I have situated its bowl of food on soft sand and he/she leaves its footprints behind.

Please wrap up warm and all stay safe and well.

Stowupland Village Hall

Excellent facilities - competitive prices



Our Village Hall is just the place for clubs and groups to meet or for special functions, such as parties, receptions and exhibitions.

There is one large room suitable for 140-260 people depending on the event. A small one seats up to 20 people. There is a well equipped kitchen, and a licensed bar, plus an audio-visual system and Wi-Fi. There is ample car parking and an outdoor children's play area.

Interested? Look on our website at <https://hallbookingonline.com/Stowupland>
Or contact Lisa Tunbridge our booking secretary
Tel: 07862740830 email: stowuplandvillagehallbookings@gmail.com

Debutots®

Imagination takes you everywhere...

Interactive Storytelling and Dramatic Play Classes

6 months - 7 years

Split into appropriate age groups, Debutots is a progressive curriculum of classes that promote children's self-confidence; stretch their imaginations and develop their language and communication skills.

enquiries@debutots.co.uk
www.debutots.co.uk

For more details visit

<https://debutots.co.uk/ipswich-stowmarket-burystedmunds/>



Debutots®

Imagination takes you everywhere...

INTERACTIVE STORYTELLING & DRAMATIC PLAY CLASS FOR FAMILIES!!! –

(For children aged 6 months-4 years)

Every Tuesday – Sept-Dec 22
At Woolpit Village Hall
Starting at 9.30 am

*...Do come and join us soon for
Family Drama Games – Stories –
Music - Puppets – Bubbles
and lots and lots of fun!!!*

To find out more and book your place:
Please visit

<https://debutots.co.uk/ipswich-stowmarket-burystedmunds/> or call
[Chrystal](mailto:Chrystal@debutots.co.uk) on 07767 478649

A RUNNER'S RAMBLINGS

KAT HAMILTON

Hi. I run. I run a lot. In fact, I am currently running a challenge RED or Run Every Day. This is where I run a minimum of one mile every day. Usually, I'll nip out first thing. If I'm out later in the day it's possibly because of one too many beers the night before. Running the morning after a curry can be interesting, and quick.

I try to vary my daily mile. It is amazing how many different routes I can make up from my front door. I prefer off-road or trail. We really are spoilt for choice around our village. Even the influx of housing estates offers new mazes to get lost in. It is incredible just how many houses fit into a field.

The record for RED is held by the late Ron Hill. He managed 52 years and 39 days, which equates to 9,032 consecutive days. I have reached 280 days. Only by some miracle of science, where I become immortal, would I beat that. I'm just hoping to get to one year. Just 85 to go.

TIGGY'S TAILS

KAT HAMILTON

"I am Tiggy. I am a curious cat. When I see a closed door, I make it my mission to find out what is behind it. There were some interesting noises coming from behind one of the bedroom doors, accompanied by a strange smell that was not human. I had to explore.

Ooh, I spy a cage in the corner. I had to take a closer look. Ooh, I spy two little heads poking out of a nest and one little creature running on a wheel. Hello gerbils. Oh, they all squeak and disappear under a box. One starts stomping its little feet.

Uh-oh. Busted!! The giveaway - I may have left the door slightly ajar. My human picked me up and took me out. Now the door is barricaded. Spoilsport. I only wanted to play.

Miaow



THE WALKERS CUP

Walkers were greeted by a lovely sunny morning as they set out from The Retreat on Sunday 25th September; walkers from Old Newton made their way from their Sports and Social Club towards Stowupland. It was good to see so many people taking part. Unfortunately, there were more people heading out from Old Newton (101) than from Stowupland (51). So, we have to relinquish the trophy. Nevertheless, we all enjoyed the walk, the sun and fresh air, and meeting up with people we only see once a year. And we raised £178 for St Elizabeth Hospice, plus any tax that can be reclaimed.



If we are to win back the trophy next year, we need to plan ahead. Already a few people have suggested ways that we might encourage more of our residents to take part. I'd be grateful to any readers or walkers who would let me have their ideas on how we might increase our number of walkers and, perhaps, offer refreshments to people before they set off and to welcome them back. Any volunteers to help with organising at our end of the walk will be welcomed. Please get in touch with any ideas and offers to help – Keith Welham 01449 673185.



Next year the Walkers Cup will take place on Sunday 10th September – put the date in your diary now, please.



RECIPE OF THE MONTH

Spicy Feta Dip

For this you'll need a food processor.

Ingredients

200g Feta Cheese (low fat version if you're being healthy), broken up.
2 Roasted red peppers from a jar (drain and dry with kitchen towel) chopped.
2 red chillies (chopped).
75g Greek Yoghurt (again 0% Fat version if you're being healthy).
Tablespoon lemon juice.
Salt and pepper to taste.

Method

Add all ingredient to food processor and blend until smooth.
If it feels a bit thick add more yoghurt.
Taste and if you like it spicier add some chili flakes.
Place in a container, and leave in the fridge for a few hours.

Serve with crusty bread, pitta bread, potato chips or vegetable crudities.

You could advertise your business here for only:

£10 per month (Quarter Page)

£20 per month (Half Page)

£40 per month (Whole Page)

Please contact: Sally Wray by email
adverts.telstar@hotmail.co.uk

THE TELSTAR TEAM

Editor – Sarah McManus – 07849 506898 - The editor welcomes contributors. Please send all articles and contents to articles.telstar@hotmail.com

Business Advertising - Sally Wray - adverts.telstar@hotmail.co.uk - 01449 676612. Businesses with a Stowupland connection can advertise at very reasonable rates.

Diary Dates – Neil Langridge – neil@stowman.plus.com - 01449 616275. To let the village know the date and venue of your event contact Neil to be included in the diary dates.

Distribution Co-Ordinators – Keith and Cathy Welham – 01449 673185
Colin Vickridge and Keith Welham are our proof-readers and Jerry Voden chairs meetings of our team. The entire team are unpaid volunteers.

Telstar is distributed by a team of volunteers who deliver the magazine to over 1,200 homes in Stowupland. The magazine is produced every month, with the exception of December and January, which is a combined copy that gives our trusty team of volunteers a well-earned Christmas break!

Telstar is funded by grants from Stowupland Parish Council and Mid Suffolk District Council as well as income from business advertisers.

Telstar – for the community, by the community.

From the Telstar Committee

Please note that the opinions expressed in letters and articles are not necessarily those of the Telstar Committee. We cannot be held responsible for the accuracy of material submitted for publication. We reserve the right to include, edit or amend as we think appropriate. Telstar is produced in good faith but errors or omissions may occur during the process of production. If this is the case, please let us know so that errors may be corrected.

Advertising Disclaimer

All adverts are placed in good faith and the publishers cannot be held responsible for any work carried out. Advertisers details are not passed to any other publishers.

Deadline Date: 7th November 2022 for December 2022 / January 2023 Edition
Printed by Gipping Press Ltd. Tel: 01449 721599. Web: www.gippingpress.co.uk

Community

BINGO

NIGHT

All Cash Prizes

FRIDAY 25th November

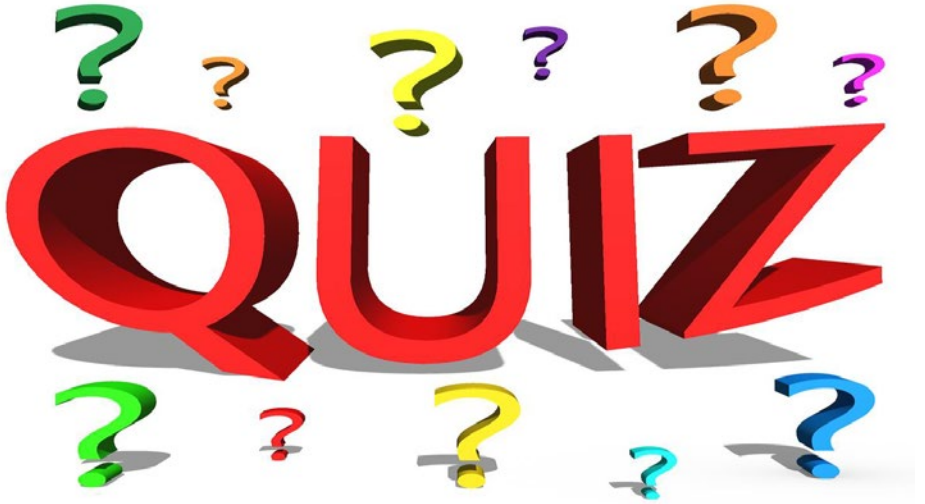
STOWUPLAND VILLAGE HALL

Doors open 7.00 pm

Eyes down 7.30 pm

Everyone Welcome (over 14's only).

Bring your own drink and nibbles



NIGHT

STOWUPLAND VILLAGE HALL

FRIDAY 18 NOVEMBER

Doors open 7.00 pm

Quiz starts 7.30 pm

£2 Per Person - Teams of up to 6 people

Please bring your own drink and nibbles

To enter a team please ring Keith on 01449 673185