

Telstar

Stowupland News

No 356
August 2022



Footpath

In this issue of Telstar:

- Introduction of new Editor *Page 3*
- Future of Community events *Page 29*
- Taylor Wimpey report *Page 33*

**M & M Butchers
Mark Hammond**

Suppliers of high quality meats, poultry,
game and award winning sausages.

**Local Meats * Home Cooked Pies
Home Cooked Hams
Dry Cured Bacon & Gammon
Selection of Homemade Burgers
Big Selection of Specialist Cheese**

Local Delivery

Opening Hours

**Monday & Tuesday 6.30am to 1.00pm
Wednesday Thursday Friday 6.30am to 2.00pm
Saturday 6.30am to 12.30 pm**

The Green Stowupland Suffolk

IP14 4AR

Telephone :

01449 677720

EDITOR'S NOTES

AUGUST 2022

Welcome to the August edition of Telstar. We have good news; we have a new editor for the magazine. Her name is Sarah Mc manus, she is new to the village so I hope you will make her feel welcome by sending her lots of copy to include in the Telstar. This month, as well as our regular contributors, we have an update from the developers, Taylor Wimpey, information on full fibre broadband for the village and a report on the Village Hall EGM and redevelopment plans for the hall. There is also a report on the future of Community Events, on the success of the recent Yard Sale and how the Cricket season is going so far. With such a variety of subjects covered we are sure you will find something to interest you.

Our new email address from the 7th of August will be; articles.telstar@hotmail.com, we look forward to hearing from you.

Front cover courtesy of Mags and Mel Crowhurst.

NEW EDITOR INTRODUCTION



Hi everyone, I'm Sarah and it's a real pleasure to be taking over as the new editor of this long-established village magazine, and I will endeavour to ensure that the high standards, set by my predecessors, continue. It's quite amazing to find out that the magazine has been going since 1963, a real achievement, so we will have to think up something special for its diamond anniversary next year.

My husband and I have only recently moved to the village, and not only am I new to Stowupland, but the county of Suffolk. I'm sure like a lot of you, the recent pandemic and subsequent lockdowns presented an opportunity to re-evaluate life, and for us being nearer to our lovely grandchildren, in Felixstowe was the prime motivation for our move. We settled on Stowupland, having visited many towns and villages in Suffolk, because of the great facilities, beautiful village green, and the lovely surrounding countryside and I'm looking forward to exploring it all, and being part of the community.

Please do continue to send your contributions to the new email address: articles.telstar@hotmail.com.

PARISH COUNCIL REPORT

JULY 2022



The meeting opened with 3 members of the public, 6 Parish Councillors and Councillor Welham representing both MSDC and SCC.

Council Report: The full SCC and the District Council reports can be found elsewhere in Telstar. Cllr Welham reported that the expected planning application for the development in Church Road has not been scheduled for the 20th July planning meeting as expected. He will advise the PC when it is to be re-scheduled once he has a date. He has also asked Phil Isobel for a site meeting at Magnolia House to discuss the ongoing visibility problems. He did point out that had any planning officer or highways officer visited the site prior to planning permission being given, the resultant problems would not have occurred. He will also be discussing the enforcement problems relating to a property in Columbyne Close and at Trinity Meadows. He also reported that he had not been included in the invitations to attend the regular meetings held by the Gateway 14 Project. In respect of SCC, he has been contacted about a sunken trench, manhole and kerb in Church Road.

Matters of Report: It was reported that the Jubilee Bench is now in place and there had been favourable comments made in relation to it.

Public Forum: One resident queried whether Taylor Wimpey had put in for planning permission as it was reported last month that they were understood to be sharing the costs of road improvements with the construction companies developing the Diapers Farm and Ashes Farm sites. He also asked if he could see the results of the survey carried out some time ago relating to the trim trail. Another resident offered her thanks for the repair to the tap in the cemetery. It was also noted that when Anglian Water dug 3 holes in the Green near the entrance to Green Farm, they backfilled with the sub soil on the top and therefore stopping the grass from growing back. Cllr Studd also pointed out that they had done the same on the holes that they had dug on the corner of Thorney Green Road.

Queen's Platinum Jubilee: There is one more invoice to come in before the final costs can be calculated for the Jubilee celebrations. Councillors were asked to think about how many trees they wish to purchase as part of the Queen's Canopy and where they would like them to be situated. There had been many favourable comments relating to the event but one negative point was the lack of an outdoor portable sound equipment. It was agreed that the PC should investigate the costs etc. of purchasing such a battery-operated sound system for future events.

Sub-Committee/Working Group Reports: Allotments – Cllrs agreed to seek a quote to cut back the cherry tree on plot 36 with the tenant's agreement after fruiting and to cut the grass round the borders of the allotments as well as strim plots 13a and 14a. The grass cutting needs to be included in the cutting schedule twice a year. This extra cost will need to be reflected in future allotment charges. It has also been reported that there has been some damage to the fence by the road and therefore a perimeter walk needs to take place when undertaking the allotment inspections.

Bio-Diversity and Wildlife - Upon receipt of the report from their May 30th meeting, it was agreed to provide the group with up-to-date maps and current cutting schedule from the mowing contractor. The next meeting is on 8th August.

Finance and Policy – Cllrs approved the July payments and noted all receipts received since the last meeting. They did not agree a quote for the construction of a footpath on the Green opposite Willow Wood to Willow Croft, Thorney Green Road as it felt that there were sections that needed clarification despite them all being given the same specifications.

Planning – Planning applications received this month include one for listed building consent, extension and vehicular access at Poplar Farm, Saxham St. There were no objections to this application. MSDC have approved 3 applications from last month in Saxham St., Thorney Green Rd and Church Rd. Cllrs agreed that Cllr Voden should represent them at the planning application number DC/22/020091

Transport, Travel and Safety – It was agreed that the speed watch officer should undertake further investigations of suitable sites and seek approval of SCC before reporting back to the PC. Cllrs approved in principle to allocate up to £12,000 towards the purchase and installation of an initial one solar powered speed indicator device plus an additional solar panel and post. If this proved successful then a further device could be purchased. It was also suggested that volunteers should be sought to move the SID equipment as it can be rather heavy for older members of the group to handle safely. It was felt that the roads with the highest priorities were A1120, B1115 and Thorney Green Road.

Trim Trail - Councillor Voden and Keith Welham, who drew up the original schedule for the Trim Trail when he was a Parish Councillor, are going to arrange a site meeting with the contractors to iron out the discrepancies in the quotations already submitted.

Councillors Reports: Cllr Studd advised that as part of the planning conditions for Green View Cottage, there should remain a large enough area on the driveway for vehicles to turn so that they always drive out onto the road forwards, however, it has been noted that cars have been observed reversing from the property onto the A1120 which is very dangerous.

Cllr Murton asked if the original posts around the Green can be fitted with reflectors to match the latest posts as the red reflective tape is falling off.

Cllr Voden reported that he is going to attend a Speed Watch Conference Chaired by the Chief Constable at Kesgrave on 29th July. He also advised that the Yard Sale proved to be a very good day raising around £500 for the Hospice and to offer his thanks to Julia and David Brown for their organisation.

Cllr Reeves noted that there was an extremely large notice relating to a lost dog that had appeared on the corner of the Green without permission being sought from the Parish Council.

Chairman's Report: The Chairman advised that Roger Carter is going to cut the half a mow area prior to the start of harvest. A zoom meeting is to be held on the 8th July between the PC representatives and Taylor Wimpey at Taylor Wimpey's request.

Clerks Report: The Clerk asked Cllrs to consider hiring a room from the High School for forthcoming meetings but advised that the charges being asked for by the school were prohibitive and they were only offering the dance studio where there are no tables or chairs available instead of the advertised 'community space' in the new 6th form building. It was agreed that this was not a viable option. She also asked them to agree the purchase of an Elipsa litter bin and a street bin which was accepted.

Correspondence: Amongst the letters received this month were 2 from residents relating to the recently tarmacked footpaths on the Heights which are very sticky. Another resident queried the lack of access to water on the allotments during this dry spell. There was a letter from National Grid about the consultation. The Village Hall has offered a reduction for the hire of the hall for the annual AGM following the problems with the electric sockets in the kitchen, no tea towels being available and lack of toilet rolls in the ladies' toilets.

The meeting closed at 8.50pm.



ANNIVERSARY • 1980-2020

**Gipping Press are proud
to print this publication**

Tel: 01449 721599

Email: enquiries@gippingpress.co.uk

www.gippingpress.co.uk

DESIGN | PRINT | PROMOTION | DISPLAYS | SIGNAGE | MAILING

STOWUPLAND COLLECTION POINT

If any individual, school, church or business would like to become a collection point for the Eco Future Group in Stowupland please contact Stowmarket Eco Future Group directly. Contact details can be found in their article.

Please don't leave your recycling on the editor's doorstep as I'm unable to help with this.

Ed.

JOHN BULL MOTORS LTD

**Petrol and Diesel
MOT testing
Servicing and repairs**

**Unit 7B Charles Ind. Estate
Stowmarket**

Phone: 01449 774150

Fax: 01449 675898

**Email:
Johnbullmotors@btconnect.com**

CHAIRMAN'S COLUMN

I and two other Parish Councillors are part of the Gateway 14 Stakeholder Group and as such are regularly invited to meetings to update us on developments on the site. At the recent meeting we were given details of the first major business to be signed for the development. A planning application is to be submitted for a distribution warehouse for The Range. The Range already have 2 distribution centres around the country and this will be their third. The plot they will occupy is referred to as Plot 4000 and will be 58.4 acres in size including car park space. It is planned to be a 1.17million square feet warehouse at the far end of the site from the A14. The early indicative outline plans for Gateway 14 for this area were for one large warehouse plus 3 smaller units but The Range are planning to utilise the area as one larger cross dock warehouse. This will allow for goods inward one side and goods outward on the other and a 24hr operation. The building is designed to be barrel roofed in 3 sections and will be 15m high to eaves and 19m high to apex. This represents a £200m investment for The Range and will deliver around 1600 jobs. The plan is for 3x 8hr shifts and there are also plans for a dedicated bus service to get employees to the site. The plan is that the application will go to Mid Suffolk District Council Planning Committee in October 2022 and if approved building to begin in January 2023 with occupation by November 2023. As this major development progresses, we will keep you updated.

Gateway 14 will present huge employment opportunities for the area but your Parish Council is conscious of the potential for increased traffic through the village and takes every opportunity to press for future lorry movements to be via the A14 and A140. We have also insisted that the roundabout resolution to the A1120/B1115 junction has capacity for any additional traffic from the employment potential of Gateway14.

Your Parish Council has complained to our District Councillor about the Planning Enforcement Dept of Mid Suffolk District Council. We have several issues within the village where your Parish Council has complained that planning has not been properly adhered to but has had no response. Some of these complaints go back to February and March of this year and the lack of feedback is unacceptable. It seems ridiculous for MSDC to have an underspend at the end of the financial year but not have enough staff to fulfil their brief.

We raised a considerable sum of money in the raffle on the Jubilee Picnic which will be used for the planting of trees for the Queens Canopy in the autumn. If any resident has suggestions for where trees could be planted, please send your suggestions in to our clerk or any councillor.

Once again, a plea for help with reviewing the Neighbourhood Plan. These things can not just be left to Parish Councillors as we are stretched almost to the limit. Each councillor gives their time freely but that time is limited. We all share in our village environment and we should all want to improve or preserve what we have. Next year is election year for the Parish Council. We still have one vacancy on the council so please give some consideration to joining us now or putting your name forward for next year's elections.

Sally Reeves

DISTRICT COUNCILLORS' REPORT

AUGUST 2022

Residents' survey

Babergh and Mid Suffolk are carrying out their annual survey of residents. Hopefully this will enable the Councils to understand more about residents' and communities' resilience and to help improve the Councils' services. Up to 8,000 households from districts have been randomly selected and invited to take part.

Mid Suffolk Council finances

For 2021/22, Mid Suffolk District Council has announced an underspend of £1.2 million against budget with net expenditure on services down by £1.6 million against a budget of £12.7 million.

Total reserves stand at just over £24 million up nearly £4 million on the previous financial year.

Capital expenditure was £13.3 million against a budget of £30 million. Recent capital expenditure includes £756,000 on the solar carport at the Stowmarket Leisure Centre (not yet operational due to issues with obtaining inverters), £666,000 on the Needham Lake café and £4.5 million on Gateway 14.

Gateway 14

The Range has announced a £200 million investment to base a major distribution centre at Gateway 14 creating 1,650 jobs (across three shifts). Once a reserved matters planning application has been approved, work is expected to start in January 2023 and occupation of the new distribution centre in Autumn 2023.

Representatives of the Parish Council attended a briefing on progress with the development. Your District Councillors were not invited but we have requested that we attend future briefings.

UK Shared Prosperity Fund

This Fund has been set up by Government as a replacement for EU funding (although with less funds available) and, in order to access it, Councils must submit an investment plan. Funding is expected to be approximately £140,000 for the rest of this year, £280,000 next year and £780,000 the year after.

Local Planning Issues

Church Road (DC/22/02091) – 14 homes. These are additional to the 18 homes approved in 2019 (application 1884/16); this permission also included parking for the primary school and an extension to the cemetery. There were concerns about the safety of crossing A1120. Also, details of how the parking area would be controlled and maintained have not been confirmed. This application is provisionally timetabled for a decision by planning committee on 20 July.

Ashes Farm (DC/20/01036) – 300 homes - is also provisionally timetabled for decision on 20 July but no date is currently set for the **Diapers Farm application (DC/21/03287)** – 258 homes.

Magnolia House, Gipping Road – Keith has again asked for the sight lines to be checked against the dimensions set out in the planning permission. The Enforcement Officer has concluded that the required sight distance is achievable from 0.38 metres (approx. 15 inches) back from the edge of the road. This is clearly inadequate.

Grants for carbon-reduction

A new fund for community-based carbon-reduction projects is now open. Projects could include promoting cycling/walking, improving energy efficiency and raising awareness of climate change. Applications can be made via the Green Suffolk website.

Locality Funding

We would welcome applications from any local club or organisation in need of funding towards the cost of a local project.

Councillor Keith Welham

keith.welham@midsuffolk.gov.uk

Telephone: 01449 673185

Councillor Rachel Eburne

rachel.eburne@midsuffolk.gov.uk

Telephone: 01449 673311

Debutots®

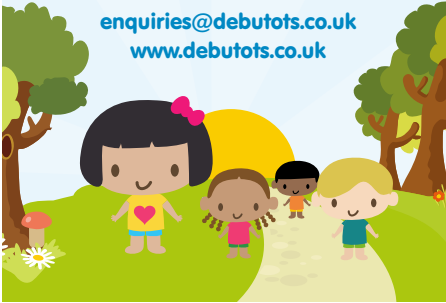
Imagination takes you everywhere...

Interactive Storytelling and Dramatic Play Classes

6 months - 7 years

Split into appropriate age groups, Debutots is a progressive curriculum of classes that promote children's self-confidence; stretch their imaginations and develop their language and communication skills.

enquiries@debutots.co.uk
www.debutots.co.uk



Debutots "Starting Big School"
Family Drama Workshop – August!

Debutots®

Imagination takes you everywhere...

STARTING BIG SCHOOL FAMILY DRAMA WORKSHOP

*(For all children starting primary
school in September!)*

Wednesday 17th August

At Stowupland Village Hall
– Starting at 9.30 am

To find out more and book a place for this fun
'Starting Big School' Family Drama Workshop

Please visit <https://debutots.co.uk/ipswich-stowmarket-burystedmunds/> or call Chrystal on 01449 833840. Do come and join us!


SSB Shed Bases
07787 551185

07787 551185

shedbasesuffolk@gmail.com

Existing shed demolition and site clearance

Garden Office ground preparation

Concrete shed bases

Patios

Driveways

Man & Micro Digger Hire

Fully Insured family business

 Find us on:
Facebook



COUNTY COUNCILLORS' REPORT

AUGUST 2022

SCC Full Council meeting 7 July

Our Group have submitted a motion calling for SCC to declare a Cost-of-Living Emergency, and for the Council to redirect funds and efforts towards targeting those most vulnerable.

Prices for fuel, food and energy are increasing as wages take a cut in real terms due to inflation. Our Group called on this government for further support to those falling below the poverty line.

In addition, we are calling on the government to make it easier and cheaper to insulate homes. Our motion asks to waive VAT on energy-saving materials, such as insulation, and adequately fund a retrofitting programme so communities can save money on their bills during winter, when energy price caps are due to rise even further.

Cabinet Meeting: SEND Capital Programme

Cabinet met on 20 June to vote on funding the next phase of SCC's programme to build more capacity for SEND children in education. The cabinet agreed a package of £15.9m, the second stage of a £45m programme; this will enable three new specialist units to be created.

Currently, there is a high demand for SEND services, with requests for placement going up by 32% since 2020. A third phase is required, and this will be discussed later this year.

Bus Services

New services on Mondays and Thursdays provided by Dan's Coach Travel have now received approval and are being run as commercial services, accepting bus passes and paying customers.

Saxham Street Resurfacing

Carriageway repairs along C408 Saxham Street, Stowupland (from Bells Lane to Debenham Lane) have been completed ready for surface dressing.

Footway Surfacing Complaints

I have passed onto SCC Highways complaints about the quality of the footway resurfacing works in Oak Road and Broomspath Road. These concerns are being investigated.

National Grid Consultation

Our Group have continued to put pressure on SCC to respond to the consultation, rejecting the current proposals for expanding the on-shore pylon network in Suffolk. Our Group are strongly against the development of more pylon networks impacting Suffolk's rural landscape and cultural heritage. The proposals are even criticised by Conservative MPs Dan Poulter and James Cartlidge.

Local Green Party Councillors attended a virtual meeting with Councillor Rout, the relevant Cabinet Member, and officers, after which SCC submitted an objection to the proposals in line with our position. They have stated that the application cannot be supported in its current form, and that an offshore alternative must be provided to be considered.

Additionally, SCC has called on Government to come forward with proposals for a strategic electricity network, in particular calling for coordinated offshore transmission and an integrated approach to planning of energy transmission generally.

Keith Welham
Keith.Welham@suffolk.gov.uk
01449 673185 or 07831 705 714

TOMLINSON GROUND CARE



JOHN DEERE

Horticultural & Garden Machinery Suppliers

Sales Service Parts Repairs Toys

Ride on mowers from £1899 inc vat

Walk behind petrol & battery mowers from £249 inc vat

Strimmers, hedge cutters, blowers, chainsaws etc

Garden tools, paddock & turf machinery

Service & repair all makes



Set in over 20 acres - Try before you buy

Established in Buxhall since 1991 - We hope to see you soon

Brettenham Road, Buxhall, Stowmarket IP14 3DL
01449 736060 www.tomlinsongroundcare.co.uk

AL-KO

EGO

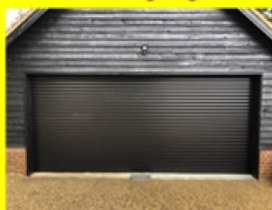
ECHO

WEIBANG

RH SECURITY & ELECTRICAL ELECTRICAL CONTRACTORS

Covering all Of East Anglia
Domestic, Commercial & Industrial Installations

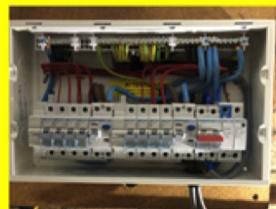
Electric roller garage doors



Automated gates



Replacement Consumer Units



TELEPHONE
07909524552



OUR SERVICES

- Electrical Inspection
Condition Reports (EICR)
- CCTV Installations
- Automated gates
- Rewires
- Electric heating (inc.
Underfloor Heating)
- Extra Sockets and Lights
- Garden Power & Lighting
- Kitchen Installations



WHY CHOOSE US

- ✓ Over 30 Years Experience
- ✓ Fully Qualified
- ✓ Insured
- ✓ All work Guaranteed
- ✓ Part P Registered Company
- ✓ NICEIC Approved Contractor

CONTACT Tel. 07909 524552 Email. richard@rhsecurityandelectrical.co.uk

I have recently been struggling financially, and I don't know how I'm going to afford to feed my family this month. My friend told me I could be eligible for Universal Credit – is this right?

You might be able to get Universal Credit if you're not working or on a low income. You can check if you are eligible by using the webchat at citizensadvice.org.uk/help/toclaim or calling for free on 0800 144 8 444. The line is open 8am – 6pm Monday to Friday.

Universal Credit has replaced older benefits such as Housing Benefit, Income Related Job Seekers Allowance and Child Tax Credits for most people. You'll get a single payment each month, rather than weekly or fortnightly. You may be able to get extra payments if you:

- look after children,
- work and pay for childcare
- need help with housing costs
- are disabled or have a health condition
- are a carer for a disabled person or you have a disabled child

There may also be other benefits you are entitled to, depending on your circumstances. You can use the benefit calculator to find out at gov.uk/benefits-calculators . If you need help, then Citizens Advice Mid Suffolk can do a benefit check for you.

If you are struggling to buy food, Citizens Advice Mid Suffolk can make a referral to your local food bank. They can also talk through your circumstances to see if there is other help they can provide or anything else you may be eligible for, such as help with your energy bills or school costs.

Citizens Advice Mid Suffolk can provide advice on this or any other issue, including debt, employment, benefits and family law. You can contact them on 01449 676060 or use the contact form at midsuffolkcab.org.uk/contact-us. For more information and our opening hours go to midsuffolkcab.org.uk.

DOWN TO EARTH

KATE ELLIOTT

At this stage of the year dusk creeps forward week by week. It is not just the quantity but the quality of the evening light that has changed. It is becoming velvety.

This is when white plants look their best - shimmering out from the shadows. So, chart the falling light and place your white flowering plants where they can shine out from the soft, falling light. We adore white plants here at Columbine - from the first snowdrops in January, 'White Triumphator' tulips in April, the joy of plum and pear blossom in spring, the many white roses we have here, Philadelphus, white lupins, *Nicotiana sylvestris*, white poppies and white sweet peas in summer, through to the final autumnal flowering of white cosmos 'Purity' and the white stems of *Rubus cockburnianus* in mid-winter.

But all these white flowers need green to seem as white as possible. The secret is to use all the range of greens available. White looks best in a garden against green. Silver foliage also works well - it makes white look cool and elegant. From the palest chalky colour of artemesia, cardoons and eryngiums there is a good range of foliage to bring out the best in white flowers.

Everyone should grow carrots. Fresh out of the ground just swished under the tap they have a rooty, earthy sweetness that is almost lost with supermarket ones.

They are in the same family as parsnips, parsley and celery, and should be grown in a rotation to follow brassicas. The ground should be well dug and rich in garden compost but should not have had any manure added the previous year as this will cause splitting. Carrots can be sown at any time between early spring and mid-summer as long as the soil is warm. Sow very thinly either in drills or broadcast across the surface and then rake in. Carrots are not naturally orange but purple. It was not until the sixteenth century that orange ones were bred. Nowadays you can have yellow, red and purple carrots and every shade of orange. They can have round or stumpy roots, pointed ones, slim ones and great long fat monsters.

Carrot fly, whose larvae bore holes in the roots, is the biggest trouble maker and is best avoided by only pulling or thinning in the evening and covering the growing carrots with fleece. A low hedge of an aromatic plant such as chives creates a barrier that the low flying insect will not go over. Alternatively covering the ground with fleece from seed to harvest will also be a carrot-fly proof barrier.



White lupins - *Lupinus albus*

Here are some jobs you can be doing this month:

- Collect seeds as they ripen, from plants such as aquilegias, sweet-peas and love-in-a-mist, choosing a dry day.
- Deadhead dahlias to encourage a constant display of blooms.
- Lift onion and shallots once their tops have died down, then leave to dry in the sun.
- Sow hardy crops such as winter lettuces, rocket and corn salad for winter pickings.
- Water crops and flowers regularly especially during hot weather.
- Remove the lower leaves of cordoned tomatoes up to the lowest truss to let more light and air reach the fruits.
- Clear weeds from cracks in paving and driveways before they get established.
- Go on regular snail hunts, especially on damp evenings, to reduce populations.
- Plant autumn bulbs such as colchicums and nerines in pots and borders.
- Strim or mow areas of wildflower meadow now that the plants have scattered their seeds.

There used to be a piece of horticultural wisdom that August was somehow a drab month in the garden and the garden would often be described as 'tired'. People would go on holiday knowing that they were not missing much. But if that was ever true, it is certainly not so now. If anything, the August borders take on an energy, full and mature. The sun is lower in the sky and the evenings, by the end of the month, much shorter, so my favourite time of day now is early evening when the sun hits the rich colours of rudbeckias, sunflowers, verbena bonariensis, cannas and dahlias so that they glow in this low slanting light. Then I wait for dusk when the white plants shimmer.



COUNTRYSIDE RAMBLER

BRIAN WARD

Summer is with us and hopefully with good weather we can get out and enjoy ourselves in the countryside. We may be strolling along a river bank, relaxing on the beach or simply having fun in the local park, as you enjoy these activities just sit, look and listen. It may be a buzz of a bee, a seagull in the sky, or a butterfly flitting by on the breeze. We all take nature for granted and it will be a sorry world for all of us if it disappears. I have been watching wildlife all my life and have seen some astonishing changes in my 70 plus years. I am lucky to remember butterflies in abundance, screaming swifts flying over every village and town, local cuckoos and newts in every farm pond. I can only hope we can reverse our wildlife decline so our children and grandchildren can enjoy what I have had a lifetime to see, absorb and enthuse about.

I am a country boy at heart but I have been fortunate to have had the opportunity to witness herds of elephant with mount Kilimanjaro as a backdrop, a pride of lions on a buffalo kill and met members of the Masi Mara tribe. I have swum with sharks, turtles, seals and penguins in the Galapagos. In the amazon rain forests I have seen vast flocks of parrots, tarantulas and exotic wildlife. Also, in Australia, kangaroos, wombats and native penguins. I can only hope all of what I have witnessed is there for our future generations.

I walk our local footpaths and still get excited when I spot a fox running away and it gives me a backward glance before it disappears into a thicket. To hear the first cuckoo or spot the first swallow is always a joy. Many people may read this and think that's pretty boring but in my world nature makes me stand in awe and often makes me smile with pure enjoyment.

I hope you witnessed the magnificent sunsets around the longest day and for a few weeks after. Sunsets and sunrises can be special times and most of us experience these when we go camping. I can recall a camping trip with my parents when I was a mere lad. A holiday to Devon was planned, we only had an old army tent (green canvas). We got to Cheddar Gorge only to discover my dad (bless him) had left the tent poles behind, so off we went to find the local shops to purchase broom handles which had to be lashed together to obtain the height. In those days you pitched up in farmers' fields after getting permission, and on one occasion I persuaded a farmer to let me fish in his stream for trout, he said If I caught one bring it to the farmhouse, I caught two!!! I duly trotted to the farmhouse with my catch and as a reward he gave me a jug of fresh milk from his dairy cows for our breakfast.

Stay safe and well and enjoy every sunrise and sunset.

NRH

PATIOS & DRIVEWAYS LTD

BLOCK PAVING SPECIALISTS

- PATIOS
- DRIVEWAYS
- PATHS
- GARDEN WALLS
- TURFING
- SHINGLE DRIVES

**CALL US FOR A FREE ESTIMATE ON:
01449 404225 07771 728481**

**E: BRETTNOELHUBBARD@GMAIL.COM
WWW.NRH.BIZ**



C.M. Hayward

Electrical Services

Lothlorien, Church Road,
Stowupland, Stowmarket,
Suffolk. IP14 4BH

01449 678213

"I'm in PAIN!"

Can Chiropractic help me?

Your initial visit will include:

- A consultation with the Chiropractor
- A thorough spinal examination with Orthopaedic & Neurological tests
- A confidential report of findings
- An explanation of our treatment programme if we determine Chiropractic can help you
- Referral to the appropriate specialist if we determine Chiropractic cannot help you

Call TODAY for an appointment

01449 612620

www.abbey-chiropractic.com



Stowmarket
Chiropractic
caring for you is our business.



Marie Broodryk
M.Tech.Chiro., CCFC, MRCC



Michael Bailey
M.Chiro

Registered with The GCC, RCC, SCA & BCA

7 Stowupland Road, Stowmarket, IP14 5AG

FREEMAN COMMUNITY PRIMARY SCHOOL



We have enjoyed a lovely summer term with lots of fun activities and sunny weather. The children have been on various trips to support their learning, ranging from visiting the Food Museum and Asda to discover more about healthy eating and food waste, to the Year 6s learning about first aid and fire safety as part of the annual 'Crucial Crew' event. We were also able to invite parents back into the school to watch their children perform for the first time since the pandemic.

Sports Week

In June it was Sports Week at Freeman CP School. The children had the opportunity to experience a range of different sports and activities during the week.

We had visits from various local sports clubs including Stowmarket Rugby Club, Cycle Speedway, Stowmarket Tennis Club, Greathead Martial Arts, Stowmarket Volleyball Club, Mid Suffolk Gymnastics and even Dan the Skipping Man!

The children also tried fitness, frisbee, dance and curling. It was a fun and thankfully very dry week, which hopefully gave them all a chance to have a go at sports and activities they normally wouldn't try.



The children have been able to work with other classes now we are bubble-free. The Year 6s planned and delivered a range of playground games to Years 1 and 2. They were very well organised and were kind, caring and helpful to the younger children and the Year 1s and 2s loved learning the new games.

The older children have also participated in a number of sporting events against other schools this term, including netball, rounders and a Quadkids tournament.

They have really enjoyed being able to compete again and have been a credit to the school with their team spirit, sportsmanship and determination.

A big thank you to our Year 1 teacher and PE coordinator, Mrs Durler, for organising Sports Week and all the other sporting events.



Year 1 & 2 Trip to Asda/Food Museum

Last month a representative from Asda visited Years 1 and 2 to discuss healthy eating and food waste. Asda then invited the children to visit the store in Stowmarket to help reinforce what they had learnt. The children were tasked with finding different fruit and vegetables and had to work out where in the world they were produced. When they were back at school, they then located these places on a map.

The children were also shown the security room at Asda and learnt how many cameras there were in the store. They met the store manager and asked him lots of questions, finding out more about how much food waste there was and where the food is sent to when it nears its 'best before' date.

Whilst they were in Stowmarket, they also visited the Food Museum and looked at different aspects of the museum linked to the topics they had been learning in class. The Year 1s were very excited to visit the old schoolroom after learning about Victorians earlier in the term and the Year 2s looked at some of the old Victorian toys as they have been learning about toys from the past. They also looked at lots of the old farm equipment which linked to their 'History of Farming' topic and all the children enjoyed seeing the farm animals!



Crucial Crew

Every year the Year 6s are invited to the Crucial Crew event at The Mix in Stowmarket. Crucial Crew is a national scheme which teaches children in Year 6 how to keep themselves and those around them safe at all times.

The sessions are led by professionals in each field and aim to show children how to stay safe in various situations including drugs and alcohol, gangs and befriending, fire safety, first aid and emotional wellbeing. The Year 6s enjoyed their morning and came back with lots of useful tips for their friends and families.

Year 5 Guitar Performance

Year 5, Willow Class, have been learning to play guitar together as a class this year with County Music. In June they performed at Trinity Park with other schools as part of County Music's 'Whole Class Ensemble Tuition' Event. It not only gave the children the opportunity to play with other schools in a big venue, but also gave the parents and carers the chance to see them perform.

As part of their last lesson this term, they performed once again to parents and carers, but this time in the school hall. It was a lovely, more intimate performance and it was nice to welcome parents back into school. Mr Watson, their music teacher from County Music, commented on how fantastic the class had been over the past year and how their exemplary behaviour and great attitude had made them a pleasure to teach.

RNLI Visit

Year 1 have been learning about Grace Darling as part of their History and English topics and were visited by Rupert Cutler from the Harwich Royal National Lifeboat Institute (RNLI) this term. Rupert told them all about the history of the lifeboat institute, heroes of the past including Grace Darling, how to stay safe at sea and about the different lifeboats and volunteers.



The children listened very carefully and asked lots of interesting questions. Later on this term they will be visiting the RNLI centre at Aldeburgh which we will feature in next month's article.



As you can see we have had a very busy but enjoyable last term. In the next issue we will be saying goodbye to our Year 6s who will be by then starting at their new High Schools and we will also find out how the Reception and Year 1 children got on with their trip to Aldeburgh.

'From tiny acorns do mighty oaks grow'

IMPORTANT CONTACTS

Citizens Advice

www.midsuffolkcabp.org.uk - 01449 676060
or 01449 676280 - 5 Milton Road South,
Stowmarket, IP14 1EZ

Doctor

Emergency - 999
NHS Direct - 111
Combs Ford - 01449 678333
Stowhealth - 01449 776000

Emergency Numbers

Power Cut - 0800 31 63 105
Gas Leak - 0800 111 999
Water Leak - 0800 771 881

Good Neighbour Scheme

HELPLINE: 07591 539621

Member of Parliament

Jo Churchill - jo.churchill.mp@parliament.uk -
Constituency Office, 10 Hatter Street,
Bury St Edmunds, IP33 1LZ - 01284 752311
House of Commons - 02072 198487
<https://www.jochurchill.org.uk/>

Mid Suffolk District Council

www.midsuffolk.gov.uk
Keith Welham - keith.welham@midsuffolk.gov.uk -
01449 673185
Rachel Eburne - rachel.eburne@midsuffolk.gov.uk -
01449 673311

Police

<http://www.suffolk.police.uk/contact-us>
<https://www.suffolk.police.uk/advice>

Police Safer Neighbourhood Team

PC 14443 Stefan Henriksen - Police Station,
Violet Hill Road, Stowmarket, IP14 1NJ
stefan.henriksen@suffolk.pnn.police.uk - Phone: 101

Samaritans – 116 123

Stowupland Village Website

www.stowupland.com

Parish Council Website

www.stowupland.suffolk.cloud

Suffolk County Council

www.suffolk.gov.uk 01449 673185
Keith Welham - Keith.Welham@suffolk.gov.uk
SCC - General Contact No. 0345 606 6067

Schools

Stowupland High School -
www.stowuplandhighschool.co.uk - 01449 674827
Freeman Community Primary School -
www.freeman.suffolk.sch.uk - 01449 612067

Vets

Cedarwood - 01449 676966
Stowe Vets - 01449 613130

DIARY DATES

AUGUST

| | | |
|----------|--------------------------------|--|
| MON 1 | evening Village Hall | Dance club |
| WED 3 | 9.30 am Village Hall | Mother & Toddler Group |
| WED 3 | 2 - 4 pm Village Hall car park | Mobile post office |
| WED 3 | 7.30 pm Village Hall | Local History Group |
| THURS 4 | 2 - 4 pm Village Hall car park | Choose Refills mobile shop |
| THURS 4 | 1.45 pm Bowls Club | Roll-up |
| THURS 4 | 7.30 pm Village Hall | Short mat bowls |
| THURS 4 | 7.30 pm URC Hall | Parish Council meeting |
| FRI 5 | 7.30 pm Cricket Club | Quiz Night |
| SAT 6 | 1.45 pm Bowls Club | Roll-up |
| SUN 7 | 7.30 pm Village Hall | Country and Western Music Club – Chris Mezza |
| MON 8 | 7.30 pm Village Hall | Village Hall trustees meeting |
| MON 8 | evening Village Hall | Dance club |
| TUES 9 | 9.30 Jubilee Court 9.50 Green | Mobile Library |
| WED 10 | 9.30 am Village Hall | Mother and Toddler group |
| WED 10 | 2 - 4 pm Village Hall car park | Mobile post office |
| THURS 11 | 1.45 pm Bowls Club | Roll-up |
| THURS 11 | 7.30 pm Village Hall | Short mat bowls |
| SAT 13 | 1.45 pm Bowls Club | Roll-up |
| SUN 14 | 7.30 pm Village Hall | Country & Western Music Club – Bob Keeley |

| | | |
|----------|--------------------------------|--|
| MON 15 | evening Village Hall | Dance Club |
| WED 17 | 9.30 am Village Hall | Mother & toddler group |
| WED 17 | 9.30 am Village Hall | Debutots "Starting Big School" Family Drama Workshop |
| WED 17 | 2 - 4 pm Village Hall car park | Mobile post office |
| THURS 18 | 1.45 pm Bowls Club | Roll-up |
| THURS 18 | 7.30 pm Village Hall | Short mat bowls |
| SAT 20 | 1.45 pm Bowls Club | Roll-up |
| SUN 21 | 7.30 pm Village Hall | Country and Western Music Club – Rick Storm |
| MON 22 | evening Village Hall | Dance Club |
| WED 24 | 9.30 am Village Hall | Mother & toddler group |
| WED 24 | 2 - 4 pm Village Hall car park | Mobile post office |
| THURS 25 | 1.45 pm Bowls Club | Roll-up |
| THURS 25 | 7.30 pm Village Hall | Short mat bowls |
| FRI 26 | 10.00 - 12.00 URC chapel | Coffee morning |
| MON 29 | evening Village Hall | Dance Club |
| WED 31 | 9.30 am Village Hall | Mother & toddler group |
| WED 31 | 2 - 4 pm Village Hall car park | Mobile post office |

SEPTEMBER

| | | |
|---------|--------------------------------|----------------------------|
| THURS 1 | 2 - 4 pm Village Hall car park | Choose Refills mobile shop |
| THURS 1 | 1.45 pm Bowls Club | Roll-up |
| THURS 1 | 7.30 pm Village Hall | Short mat bowls |
| FRI 2 | 7.30 pm Cricket Club | Quiz Night |
| SUN 11 | 10 - 4 from The Retreat | The Walkers Cup |

MSDC General Contact No. 0300 1234000

Mobile Library - 07721 879855

Parish Council

Sally Reeves - Chairman - 01449 745739

sallyreeves@stowuplandpc.co.uk

Laura Beeson - 07918 808387

laurabeeson@stowuplandpc.co.uk

Donna Bridges - 07736 348335

donnabridges@stowuplandpc.co.uk

John Hayward - 01449 674717

johnhayward@stowuplandpc.co.uk

Laura Johnson - 07826 851030

laurajohnson@stowuplandpc.co.uk

Debra Melhuish - 07979125904

debramelhuish@stowuplandpc.co.uk

Paula Murton - 07906 677817

paulamurton@stowuplandpc.co.uk

Kevin Stevens - 07747 605042

kevinstevens@stowuplandpc.co.uk

Ray Studd - 01449 676606

raystudd@stowuplandpc.co.uk

Jerry Voden - 01449 703717

jerryvoden@stowuplandpc.co.uk

Clerk to the Parish Council - Claire Pizzev

parishclerk@stowuplandpc.co.uk - 01449 677005

2 Broomspath Road, IP14 4DB

Parish Council Minutes of meetings and agendas are available on the Parish Council Website

www.stowupland.suffolk.cloud

Village Hall Bookings

Lisa Tunbridge - Phone - 07862740830

stowuplandvillagehallbookings@gmail.com

Village Clubs

Baby and Toddler Group -

Kelly Woolnough - 07776 206430

Book Group - Patricia Hodgkins - 01449 672127

Stowupland Bowls Club - Graham Newman -

01359 240846

Community Events - Keith Welham - 01449 673185

Country and Western - Pat Murphy - 01449 677405

Dance Club - Mary Durham - 01449 672601

Local History Group - Jerry Voden - 07951 086383

Short Mat Bowls - Pam Fayers - 07713026696

Sports and Social Club - Mark Dye - 07799 662491

Stowupland Cricket Club

www.stowuplandcricketclub.co.uk/

Stowupland Falcons Football Club -

stowuplandfalconsfc.co.uk

Stowupland Sports Centre -

info@stowuplandsportcentre.co.uk - 01449 672531

Stowupland Wildflower & Biodiversity Group -

Keith Welham - 01449 673185

Stowmarket Wildlife Group - John Thompson -

swtstowmarket@gmail.com - 01449 676471

FITNESS TRAIL

Analysis of Questionnaire Responses

Questionnaire responses were as follows:

Number of responses 55

Of these, 10 people said they would not use the trim trail.

Of those 10 people, 8 said that the scheme should not be provided.

82% of respondents said that they would use the trim trail if provided:

Walking 64%

Running 28%

Fitness equipment 22%

The figure exceeds 100 because some people said that they would use the equipment as part of their run or walk.

71% of respondents agreed that fitness equipment should be provided.

85% of respondents agreed that an all-weather footpath should be provided along the edge of The Green to link the Thorney Green Road footway in Gipping Road.

FULL FIBRE BROADBAND

Your Parish Council has been informed by BT Openreach that they will be installing the infrastructure for full fibre broadband within the village very soon. There will be some disruption around The Green and there will need to be a brief closure of Thorney Green Rd to allow them to get the cables under the road. Most of the work around The Green will be underground and done using a mole plough wherever possible to mitigate any damage to The Green. Any damage will be put right by the contractors. There will need to be a new pole erected at The Green end of Columbyne Close with a short length of overhead cable. At the time of writing, 7th July 2022 we do not have a confirmed date for the start of these works but your Parish Council felt it appropriate to give residents prior notice of the works. As soon as we have a date for the start of these works we will post it on the parish website and on our social media page.

Sally Reeves

JJ'S Waste Services

- All Types Of Rubbish Cleared
- End Of Tenancy
- Garden/Garage
- Office Clearance
- All Types Of Scrap Metal Collected

FULLY LICENCED

Call Us On: **07912 172826**

www.suffolkwasteremoval.co.uk
johnjames1970@icloud.com

L
E
T
S

G
E
T

W
A
S
T
E
D



W. Jarvis & Son
Tree Services
& Landscapes



Scan
me!



All aspects of tree surgery,
landscaping and fencing undertaken.

Fully insured, 24hr callout,
council approved contractor
with over 40 years in the industry.

Call for a free estimate & advice

T: 01359 241958

M: 07891 208710 • 07850 046504

Visit our website for information about
our company and the work we do
www.wjarvistreeservices.co.uk

FUTURE OF COMMUNITY EVENTS IN THE VILLAGE.

Firstly, thank you to all concerned in organising the Jubilee Picnic on the Green on the 2nd June. The Parish Council have had good feedback from the event with many residents asking for similar events in the future. These events don't just happen, they take a lot of planning and dedication and this is all down to the organising committee led by Sally Reeves.

Community Events are an important part of our village life and we want to build on the success of the Jubilee picnic. For example, recently Dave and Julia Brown organised a successful yard sale, raising funds for St Elizabeth Hospital. Pre covid we had bingo and quizzes on a regular basis and we would like to revive these and hopefully be inspired to take on other events. So, with that in mind we would like to form an Events Committee to take this on.

If you would like to be part of organising events and bringing the village back to life, please e- mail jerry.voden@stowuplandpc.co.uk or ring for a chat on 01449703717. We can then have an informal meeting to discuss the way forward. By the way the next planned village event will be the Walkers Cup on Sunday 11 September 2022. We look forward to seeing you there.

07534 525 263
01449 258 254

Gidney 
Plumbing & Heating Ltd

Professional & Reliable Service



**Plumbing, Bathrooms, Heating, Boilers, Servicing,
Underfloor Heating, Tiling, New builds & Renovations**

enquiries@plumbinginsuffolk.com www.plumbinginsuffolk.com

Computer Repairs



Windows, MS Office, E-mail,
Internet, Broadband, Security

Solutions resolved remotely
(for those in self-isolation)
or in your own home

One to One tuition.

Phone Shelli of MPM on
01449 770704
07733 262116

Let a local company in Stowupland
support you.

Eastern Frames

Bespoke Framing Service

Greeting Cards & Photo Frames
X-Stitches Stretched & Framed

Fast & Reliable Service

www.EasternFrames.co.uk

Red House Farm,
Station Road
Haughley.

Tel. 01449 675897

Monday – Friday
9.00am – 5.00pm

Saturday
9.00am – 12noon



Andrew Bingham

INDEPENDENT FUNERAL SERVICE

Stowmarkets Independent Family Funeral Service

24 Hour Personal Service • Private Chapel of Rest • FREE Parking



Telephone: **01449 771666**
www.andrewbingham.co.uk



The Nutshell, Milton Road South, Stowmarket, Suffolk IP14 1EZ

Golden Charter
Funeral Plans 

STOWUPLAND VILLAGE HALL - EGM AND REDEVELOPMENT PLANS

Plans for the redevelopment of Stowupland Village Hall are moving forward. The trustees have worked with an architect to prepare a set of proposals we feel meet the needs of the Village Hall and its users for the foreseeable future. In order to finalise the plans we want to consult with the local community and our users and so will be holding a Public Meeting as part of our EGM on Friday 9th September 2022. Please come along to the Village Hall at 7:00pm for a presentation of the plans and a chance to ask the trustees and architect about those plans. Refreshments will be available.

Redevelopment Plans

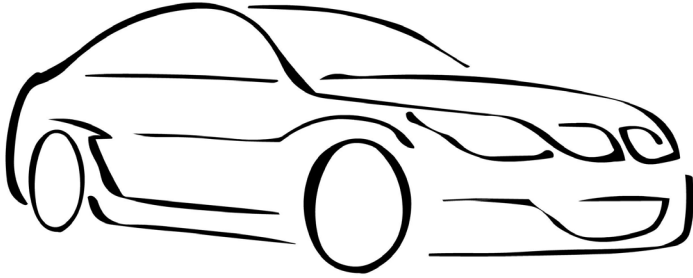
The Village Hall was built in the 1940's and is starting to look its age. The roof keeps leaking and the layout is not ideal for all the modern day uses. The Bowls Club Pavilion is also reaching the end of its life and in desperate need of replacement. As a result, the trustees have drawn up plans with an architect to redevelop the Village Hall to include:

- A new Pavilion for the Bowls Club.
- New and expanded changing rooms for the Football and Cricket Clubs.
- More storage in the Village Hall for chairs, tables and clubs.
- A new meeting room.
- A new multi-use room for hire which is smaller than the existing hall.
- Improved toilets and kitchen facilities.
- Improved bar for the Social Club and Village Hall.
- Redecorating and refurbishing the Village Hall and Social Club areas.
- Modern efficient heating backed up by solar panels.
- New improved outdoor storage facilities for the Football and Cricket clubs replacing the current mixture of sheds and storage compound.
- Completion of the Safely to Schools route across the Village Hall land filling in the missing link from the High School to the Primary School.

The Extraordinary General Meeting (EGM)

As a registered charity the Village Hall has to agree certain things at an AGM or an EGM. This EGM will agree our accounts so we can file them with the Charity Commission and hopefully agree a change to our constitution so we can hold our AGM in July rather than April as that will enable us to agree accounts at the AGM rather than having to keep calling EGMs. After that, which should only take a few minutes, there will be the presentation on the redevelopment plans. Please do come along and support the Village Hall if you can.

FAST TEST STOWMARKET



MOT~SERVICING~AIR-CON

Fast Test can service all makes and models of cars and light commercial vans, as well as welding repairs, computer diagnostics and Air-Con re-gassing.

Fast Test can also offer a lift home or to work in the surrounding Stowmarket area or a courtesy vehicle.

Contact: Adam Bennett
Tel: 01449 770902

Address:
Unit 4, Tomo Business Park,
Tomo Road, Stowmarket,
Suffolk, IP14 5EP

A MESSAGE FROM TAYLOR WIMPEY

SUMMER 2022



We appreciate it has been a little while since we provided an update to the Parish on our site south of Stowmarket Road, Stowupland. You may recall that we consulted on our proposals at the end of last year (November 2021), and were very grateful for all feedback received. Since then, the Babergh Mid Suffolk Joint Local Plan has been 'paused' and we are awaiting further information on the progress with the JLP before moving forward with any further activity in relation to the site.

We are aware there has been discussion locally about the Memorandum of Understanding which secures the delivery of the new roundabout that is being proposed at the A1120/B1115 junction.

There are three parties to this agreement - Crest Nicolson (developers of Diapers Farm); St Philips (developers of Ashes Farm); and Taylor Wimpey.

This agreement secures that before more than 75 houses are built on either one or between these sites, that a new roundabout must be delivered. The roundabout will be delivered by whichever developer or developers reach this trigger first. This is important as it means that only one set of roadworks and roundabout is needed to support all three developments if they are granted planning consent.

We wish to clarify that although Taylor Wimpey are a signatory to this agreement, it has no weight at all in any future planning decision making, and will play no part in determining whether or not our site is approved by Mid Suffolk District Council's planning department.

The only reason that all three parties are signatories to this agreement is so that if one site does not come forward, then the roundabout will still be delivered by the other developers.

To confirm, at the time of writing Taylor Wimpey does not have a valid planning consent at this time on our site in Stowupland, and there is no timeframe for bringing forward an application on this site given the uncertainty of the JLP.

STOWUPLAND CRICKET CLUB



2022 has seen an exciting start to the season for all teams, adults and juniors alike.

The 1st XI has had a mixed start to the season, currently sitting in seventh place in a very tightly contested league where a win can swing the team 5 or 6 places in either direction!

Notable batting performances to date include Tom Abbott 110* against Harwich & Dovercourt, Tom Wray 82 against St Margaret's, Louis Blanchard 65 against Dunmow, and Rob Fox 64 against West Bergholt. Stand out bowling has been seen from Scott Gregory – 18 wickets and 5/32 against Dunmow, Ben Mills - 15 wickets and 4/39 against Halstead, Dan Marsh – 14 wickets and 3/34 against Abberton & District, and Luke Abbott – 14 wickets.

The 2nd XI has also experienced both wins and losses but is currently sitting 5th in the league. Notable batting performances to date include Malan Du Toit 85* against Nacton, Tim Mills 74 against Stradbroke, Akshay John 66 against Nacton, and Aakshrit John 61 against Stradbroke. Top bowling performances have come from Malan Du Toit – 25 wickets and 4/22, Daniel Browning – 17 wickets and 4/23, Dan Webb – 10 wickets and 3/8, Ollie Miller – 9 wickets.

The Mid Week team have had excellent performances and a couple of nail-biting finishes and find themselves in the league cup final next week. Top run scorer and wicket taker is Louis Blanchard with Grant Wearing boasting a 204.35 strike rate and Ben Mills a 5.83 bowling economy.

The junior teams have also had a positive start to the season, playing lots of matches and featuring many excellent shows of talent. There is still time for any interested youngsters or indeed any adults to come and join us with plenty of games remaining for all teams. Junior training takes place on a Friday evening from 6 – 8pm. Please contact Melanie Blanchard - mcblanch@hotmail.co.uk if you are interested in coming along.

You could advertise your business here for only:

£10 per month (Quarter Page)

£20 per month (Half Page)

£40 per month (Whole Page)

Please contact: Sally Wray by email adverts.telstar@hotmail.co.uk

GRAHAM MOORE ELECTRICAL LTD

Blacksmiths Cottage, Silver Street, Old Newton, IP14 4HF

For all your electrical needs



For a friendly and efficient service

Call Graham on Tel: 01449 616946 Mobile: 07867 560357

- FREE ESTIMATES ● ALL WORK GUARANTEED ●

Reduce your Accountancy costs

Call Sarah Place Accountants

Professional efficient Accountants with over 15 years experience

Accounts • Book-keeping • Payroll • Sage

VAT & Tax Returns

01284 747 139

Stowupland Village Hall

Excellent facilities - competitive prices



Our Village Hall is just the place for clubs and groups to meet or for special functions, such as parties, receptions and exhibitions.

There is one large room suitable for 140-260 people depending on the event. A small one seats up to 20 people. There is a well equipped kitchen, and a licensed bar, plus an audio-visual system and Wi-Fi. There is ample car parking and an outdoor children's play area.

Interested? Look on our website at <https://hallbookingonline.com/Stowupland>

Or contact Lisa Tunbridge our booking secretary

Tel: 07862740830 email: stowuplandvillagehallbookings@gmail.com

YARD + GARAGE SALE DAY

SUNDAY 26TH JUNE

Having inspired 43 people to take up the challenge of selling stuff they didn't need anymore:-

We hoped for :-

Nice weather ----- got that

Lots of buyers ----- got them

43 well presented sales sites -----got that

Detailed maps so buyers could find the sites, the food outlet etc ----- got them

With regard to the food outlet, now that Nutshells has unfortunately gone, we contacted a mobile caterer. The number of places to site him are now very limited in the village, so we chose the area in front of M – M Butchers as the best place.

Unfortunately it did block the road quite a lot, so hope that didn't spoil too many peoples day.

NOW THE THANK YOU'S

To all the 43 sellers

To Dave Pring for producing the site maps

To Telstar for promoting the day

To M – M Butchers for allowing the caterer to park in front of shop.

To Digital Copy Centre, Stowmarket for all the printing for the day

To villagers not involved for their patience on a very busy Sunday, perhaps they had all gone to the beach, because we didn't see that many.

Now the most important bit:-

| | |
|------------------|----------------|
| Yard Fees | £322.50 |
| Map sales | £ 40.00 |
| Donations | £137.50 |
| TOTAL | £500.00 |

This is less than last year but we had 11 sellers less which makes a difference.

We hope that each (East Anglians Children Hospices) will be happy with our day and we will try again next year.

**Thank you
Dave and Julia Brown**



**F. G. BROWN – OPTICIANS
Denmark House, 41 Bury Street,
Stowmarket.
Tel:- 01449 612812/674030**

As independent opticians we offer a more personalised eyecare service that you can trust for all the family including:-

**Optomap retinal examination
Colorimetry**

**A wide range of competitively priced frames
and spectacle lenses
Contact lenses**

Prescription and non-prescription sunglasses

Your sight care is our priority



LOCAL HISTORY GROUP

Our thanks to Liz for her valiant efforts in keeping Telstar going and my apologies for making her job more complicated than it needs be. Our images from **'70 Glorious years of Stowupland's Pastimes'** can now be seen on the SLHG website (www.stowuplandlocalhistorygroup.org). Following on from the display Neil has been kept busy trying to find out answers to some specific enquiries and this is helping us understand more about Stowupland's past.

Unfortunately, as I expect you are all aware Covid is still disrupting plans. Neil thought he was doing well as he had arranged speakers for our meetings through to May 2023. Unfortunately, he is already having to rearrange our events' calendar. We will always try to notify members of changes to our expected events but please if you are making a special journey to hear a specific speaker then call or email Jerry before setting out. Alternatively come along anyway and enjoy what we have to offer.

So, for our July meeting, instead of listening to Nicky Reynolds sharing her research into the Women's Land Army we were very grateful to Pip Wright for stepping in at short notice to entertain us. You can read what he spoke to us about in next month's Telstar.

All being well on **August 3th we will welcome Lisa Harris from the Food Museum in Stowmarket**. She will share the museums plans for the future. Then next month September 21st (NB CHANGE OF DATE) we hope to hear **Nicky's talk on Soil Sisters** and we will save our Trawl through our Archives for a rainy day.

Looking back to June, here is Jerry's Report on Dr Nicholas Amor's talk:

Dr Amor took us back to medieval times with his talk on how 'Law and Order' was applied to keep the peace in Suffolk. Histories of the time suggest that this was quite a lawless time with many gangs causing mayhem across the country. However, Nick explained that contrary to the impression that these histories give, there was a well-developed system of justice to enforce the laws of the time.

His main theme was that people did have a genuine fear of criminality, and punishments for serious crimes were severe. The death penalty was a real possibility for anyone accused of a capital offence. The legal system was enforced through collaboration between the local gentry and local elite. Poaching, vandalism and theft were fairly common and just as today, news of crimes would circulate around the county by word of mouth. Dr Amor gave an example of one type of crime which he had researched, sharing some statistics of thefts reported from Royal Deer Parks in the years 1308 to 1316. Over the 8 years he found there had been 489 offences recorded, the total value of the deer stolen was put at £362 7s 6d. Also, because of food shortages between 1315 and 1317,

he found a high number of sheep being reported as stolen around the county. It is interesting to note that in the main the courts were kind to some of those caught in the act, as they seemed to take the view that the miscreant was trying to provide for their family.

Dr Amor concluded that despite reported levels of upheaval, crime and punishment around the county in the medieval period, Suffolk remained fairly peaceful in these turbulent times.

Moving forward to the 20th century, Neil L continues his series on Stowupland's vicars:

Thomas William Arch 1947 – 1954

The Reverend Arch hailed from Wales. Born in 1898 his father was a land agent and farmer. The family lived at The Abbey Strata Florida in Cardiganshire. The house standing in the grounds of the ruined medieval abbey is now owned by The Strata Florida Trust and is being developed as a cultural centre.

Thomas married Laura Lilian Davies in Lancashire. In 1939 we find them in Birmingham where Thomas is a "missioner to the deaf and dumb". Serving in the RAF during the war he won the Distinguished Flying Cross in 1944.



Reverend Arch with Creeting St. Peter Church choir which he formed in 1953

After the war he trained at Bishops College, Cheshunt and was ordained at Bury St. Edmunds in June 1954. His first post seems to have been Assistant Curate at St. Augustine's Church, Ipswich. From there he moved to Over Kellet in Lancashire as vicar from 1954 until in March 1959 he was instituted to the united benefice of Stowupland and Old Newton.

After leaving the parish he was vicar of 2 more benefices in the county – Worlingham then Cotton and Wickham Skeith. He was also chaplain to the Suffolk wing of the Air Training Corps and the Royal Air Force Association.

A son, Gwyn, played the organ in the church during his father's time here and later taught music at Rickmansworth Grammar School.

Gwyn's son is Dave Arch the musical director of BBC's "Strictly Come Dancing" and can be seen regularly conducting the band on the show.

We look forward to seeing you on August 3th, or September 21st, 7.30 @ the Village Hall.

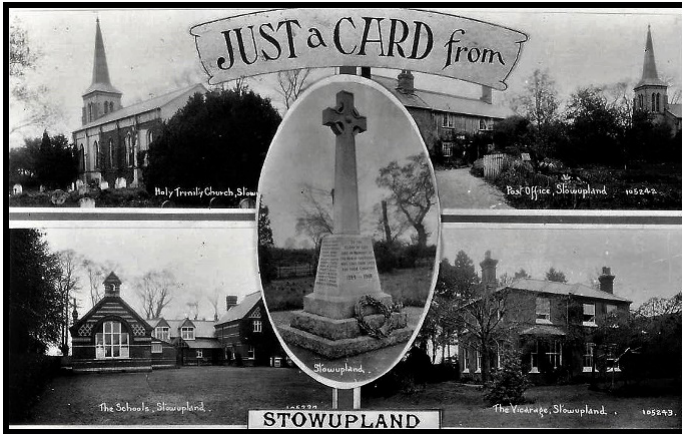
**If you have any questions or comments, please contact Jerry Voden
01449 703717: secretary@stowuplandlocalhistorygroup.org**

DOWN MEMORY LANE

When did you last send or receive a post card?

In the early 20th century when photos were taken on a proper camera, with a light sensitive film inside which had to be chemically processed to reveal the image, it seems many photos were printed to be used as a postcard.

Have you ever sent or received a telegram?



CHIMNEY SWEEP

ECO SWEEP CHIMNEY SERVICES

- NEW POWER SWEEPING METHOD USED FOR A MORE THOROUGH CHIMNEY CLEAN THAN BRUSHES.
- INDUSTRIAL HEPA FILTERED VACUUM.
- FULLY INSURED.
- INSURANCE RECOGNIZED CERTIFICATES ISSUED.
- SPOTLESS, RELIABLE AND FRIENDLY SERVICE.
- ALL CHIMNEYS, WOOD BURNERS, AGA, BOILER FLUES SWEPT.
- GUILD OF MASTER SWEEPS CERTIFICATED MEMBER.



TEL. 01359 232335

COLNE ROOFING

Stowupland

Jon Johnson



Specialising in:

- New roofs
- Re-roofing
- Repairs
- Lead work
- Gutter maintenance

References upon request



Contact details:

07917 548441

colneroofting@gmail.com



Upstairs in,
The Crown Stowupland.



07432699919



info@british-beauty.co.uk



@britishbeautysuffolk_



@britishbeautysuffolk



<https://british-beauty.co.uk>



Hi! I'm Emily, owner of

British Beauty Salon



Open your phone camera & scan
me to find out more!



The
**United
Reformed
Church**

U.R.C CHAPEL

NEWS

Minister: Revd Robert Sheard
Telephone 01449 678173

Our next Coffee Morning is on Friday 26 Aug 10 to 12noon give us a visit for a cuppa and cake.

I can't believe that I am now writing a piece for the August magazine. Where does the time go. The gardens are beginning to look very colourful as the sun burns down on them and the keen gardeners are very diligent with their watering. We have had a few showers but not enough. Most lawns are looking very brown.

We pray for all those suffering in this world especially in Ukraine as we watch the destruction and devastation on our TV screens.

Services will be held at the URC Chapel each Sunday at 10.30am and you are cordially invited to join us in worship. A warm welcome awaits you.

The Speakers for August are as follows:

| | |
|--------|-------------------------|
| 07 Aug | William Glasse |
| 14 Aug | Stephen Horrex |
| 21 Aug | The Revs Mary Playford |
| 28 Aug | The Rev Richard Edwards |

Joyce Gardiner

MINISTERS MESSAGE

Psalm 96 1-2

*1 Sing to the LORD, sing praise in a new song;
Sing to him all who to the earth belong!
2 Sing to the LORD and praise his holy name;
From day to day his saving work proclaim.*

This year as part of the United Reformed Churches celebrations for its 50th year they are having a hymn writing competition, this got me to thinking about how churches react to new hymns and songs. Some would say "New Song? New song? You've got to be joking' This is often the reaction that many worship leaders get when we have a new hymn/song in worship. Congregations almost seem scared to try a new hymn, and do not have the confidence that they can pick it up quickly to sing it in worship. There is something comforting about singing the familiar. (There is nothing wrong with that)

Often when I attend a meeting or conference, they often have a hymn and we have no time to practice it, but it always goes well. Yes, it can be a challenge to learn it as you sing it but to me it can reflect what worship should be. Congregations can be very resistant to new songs and hymns as their words and music take them out of their comfort zone and into frightening new territory. If we can see new songs or hymns as a metaphor for new ideas, new ways of being, new ways of relating to others and new ways of being what God has called us to be, then the challenge is clear. Worship should not always be comfortable; we need to be challenged in our worship.

Once we pick up the courage to sing a new song or hymn, like the psalm shows us, then the whole Earth can open up to our senses. The focus of our worship is a strong glorious God and his words of joy, praise and rejoicing, not scepticism, fear and uncertainty. It is not about how well we can sing or follow the tune or even how quickly we can read the words, it's about recognising that all creation will laugh out loud with Joy because God is in and overall and that includes us. God's saving work is a new song. Heaven and Earth rejoices in a new song, the fields, forest and fishes sing a new song, so let's try new songs and hymns for ourselves, our new voices may yet surprise us.

Yours in Christ, Robert

*Reverend Robert Sheard Minister of the Stowmarket group of Churches.
The group consists of Stowmarket, Debenham, Mendlesham, Haughley & Stowupland)*

COFFEE MORNING

Friday 26th August 2022

Stowupland URC Chapel 10am – 12noon

Coffee, Tea and Cakes

All welcome



HOLY TRINITY CHURCH

NEWS

HOLY TRINITY CHURCH
STOWUPLAND

Vicar : Revd Brin Singleton Tel. 770921
Churchwardens : Mrs Ann Doubtfire Tel. 770363
: Mrs Sue Hayter Tel. 613710

Email: brinsingleton@btinternet.com
<https://www.achurchnearyou.com/church/2082/benefice/>



Dear Friends: -

Last month I wrote about the heroes of our faith, this month then, what about the heroes of today. Do you remember the days of our 'Clapping for Key Workers'? Do we remember why we applauded and gave our thanks? Well because we were dependant on their sacrifice to get the country through the pandemic. From public transport to deliveries and postal services, to shop assistants, carers and health services, these were the people we relied on, and by their sacrifice and their increased exposure to the virus before even personal protective equipment had been ordered. Before even our care homes were being protected, while even the 'ring of protection around our care homes' was just an empty soundbite. These were the heroes whose suffering sacrifice and endurance, enabled us to endure restrictions and lockdowns through pandemic's early years, and still by their ongoing endurance today enable our return to more normal expectations in living with covid.

How soon is the narrative of our true debt re-written! Remember Jesus' observation against the law makers of His day 'do whatever they teach and follow it, but do not do as they do, for they do not practise what they teach' Matthew 23.3. And how today's law makers seek to re-write truth in claiming for themselves as those to whom society owes the debt.

And I'm sure here many will tell the church to keep out of politics, yet Christ's church is called upon in every age to speak truth even as Jesus proclaimed before Pilate 'for this I came into the world, to testify to the truth' John 18.37. Well, most folk can remember Pilate's reply 'What is truth!' Just as with today's governors, Pilate was not waiting for an answer merely seeking a way out and to hold on to power.

To be sure the church has, does and will get plenty wrong, for which we are rightly bought to account, yet still we are called to testify to truth, let us pray then society too will never tire of truth.

Your servant in Christ Brin,

Rector @ Haughley with Wetherden and Stowupland. achurchnearyou.com

Services in August 2022

| | | |
|----------|--------|------------------|
| 7th Aug | 9.30am | Parish Communion |
| 14th Aug | 9.30am | Worship for All |
| 21st Aug | 9.30am | Morning Prayer |
| 28th Aug | 6.30pm | Evensong |

A PRAYER:

To your mercy and care, O God of love, we commit all who are dear to us, and especially those within our family circle. Guard their lives; guide their steps; give them peace, and unite us all in your faith and love, for the sake of Jesus Christ our Lord. Amen

FOOD BANK BOX:

If you would like to donate items for the Food Bank to help those in need of a helping hand, there is a box at the back of the church for you to leave your items. Thank you!

CHURCH HALL HIRE:

Please remember that the well-appointed Church Hall is available for hire at reasonable rates, and would be ideal for children’s parties and small groups/meetings. For more information, please contact Sue Hayter on 01449 613710. Thank you.

HOLY TRINITY CHURCH, STOWUPLAND 100 CLUB

We will be running our 100 Club again this year and will be contacting existing members soon to invite you to renew your membership.

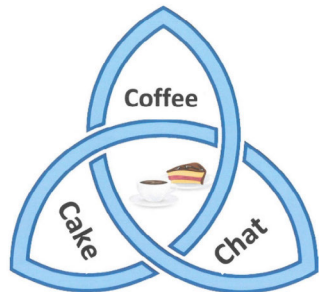
We did not run it last year to protect people from Covid when collecting subscriptions. A few members paid for last year including those using Standing Order. We will be giving you an additional entry in this year’s draw so you do not lose out.

If you are not a member why not consider joining? It costs £12 a year. We have a monthly draw with prizes of £25, £15 and £10. Half the income covers prizes and the other half supports the cost of running the church. Please contact Kevin Stanford 01449 613027 or kevinstanford@btinternet.com (Please note if we have more than 100 entries, extra prize(s) will be awarded).

**Come and join us for
Stowupland Church Hall
Saturday 20th August
10-12**

***There will be tea/coffee, cakes,
raffle and good company***

Everyone is welcome



Growing in God

Planning for growth

This year we are running **The Church Development Tool** survey in all our churches. It's a quick, anonymous survey that we're inviting everyone to complete, to help us shape our prayers and our planning for the year ahead. What we find out will help us see where we're doing well, and help us discern areas where God might be calling us to do something new or different. Scan your **QR Code**, or visit your **achurchnearyou.com**, or visit your church for a paper copy.

Please respond by November

Thank you!

Haughley St Mary



Wetherden St Mary



Stowupland Holy Trinity



A1



Locksmiths

**24 HOUR LOCKSMITH
BASED IN STOWUPLAND**

NO CALL OUT FEES

All locks supplied and fitted

TEL: 01449 673770
(HOME)

TEL: 07525 168895
(24 HOUR)



Email: arron@stowmarketlocksmiths.co.uk
www.a1carpentryandlocksmith.co.uk

*Fed up of running around
after your car?*

Why not give us the inconvenience
– it's part of our service

WE COLLECT & DELIVER

Servicing, Welding,
MOTs arranged
Air-conditioning recharged
General Repairs –
shocks, clutches, brakes etc
All work guaranteed

S & P Meta-care
Est 1990

Contact: Shane
Tel: 01449 771102 or 07802 545737

***Personal Service at
Competitive Rates!***

THE TELSTAR TEAM

Editor - The editor welcomes contributors.

Please send all articles and contents to articles.telstar@hotmail.com

Business Advertising - Sally Wray - adverts.telstar@hotmail.co.uk - 01449 676612

Businesses with a Stowupland connection can advertise at very reasonable rates.

Diary Dates – Neil Langridge – neil@stowman.plus.com - 01449 616275

To let the village know the date and venue of your event contact Neil to be included in the diary dates.

Distribution Co-Ordinators – Keith and Cathy Welham – 01449 673185

Colin Vickridge and Keith Welham are our proofreaders and Jerry Voden chairs meetings of our team. The entire team are unpaid volunteers.

Telstar is distributed by a team of volunteers who deliver the magazine to over 1,100 homes in Stowupland. The magazine is produced every month, with the exception of December and January, which is a combined copy that gives our trusty team of volunteers a well-earned Christmas break!

Telstar is funded by grants from Stowupland Parish Council and Mid Suffolk District Council as well as income from business advertisers.

Telstar – for the community, by the community.

From the Telstar Committee

Please note that the opinions expressed in letters and articles are not necessarily those of the Telstar Committee. We cannot be held responsible for the accuracy of material submitted for publication. We reserve the right to include, edit or amend as we think appropriate. Telstar is produced in good faith but errors or omissions may occur during the process of production. If this is the case, please let us know so that errors may be corrected.

Advertising Disclaimer

All adverts are placed in good faith and the publishers cannot be held responsible for any work carried out. Advertisers details are not passed to any other publishers.

Deadline Date: 7th August 2022 for September 2022 Edition

Printed by Gipping Press Ltd. Tel: 01449 721599. Web: www.gippingpress.co.uk

The Walkers Cup

Stowupland v Old Newton

Sunday 11 September

Come and join Team Stowupland
and help us retain the Walkers Cup



It's not just about local pride, it also helps raise money for the St Elizabeth Hospice – there's a minimum £2 donation when you register but you're welcome to give more if you can.

And you get a lovely footpath walk between the two villages. At a gentle pace it should take a couple of hours from The Retreat in Stowupland to the Sports and Social Club in Old Newton, and back again.

Register at the Retreat from 10.00 a.m. onwards and complete the walk by 4.00 pm at the latest.

The village with the most walkers completing wins the cup. Couldn't be easier!